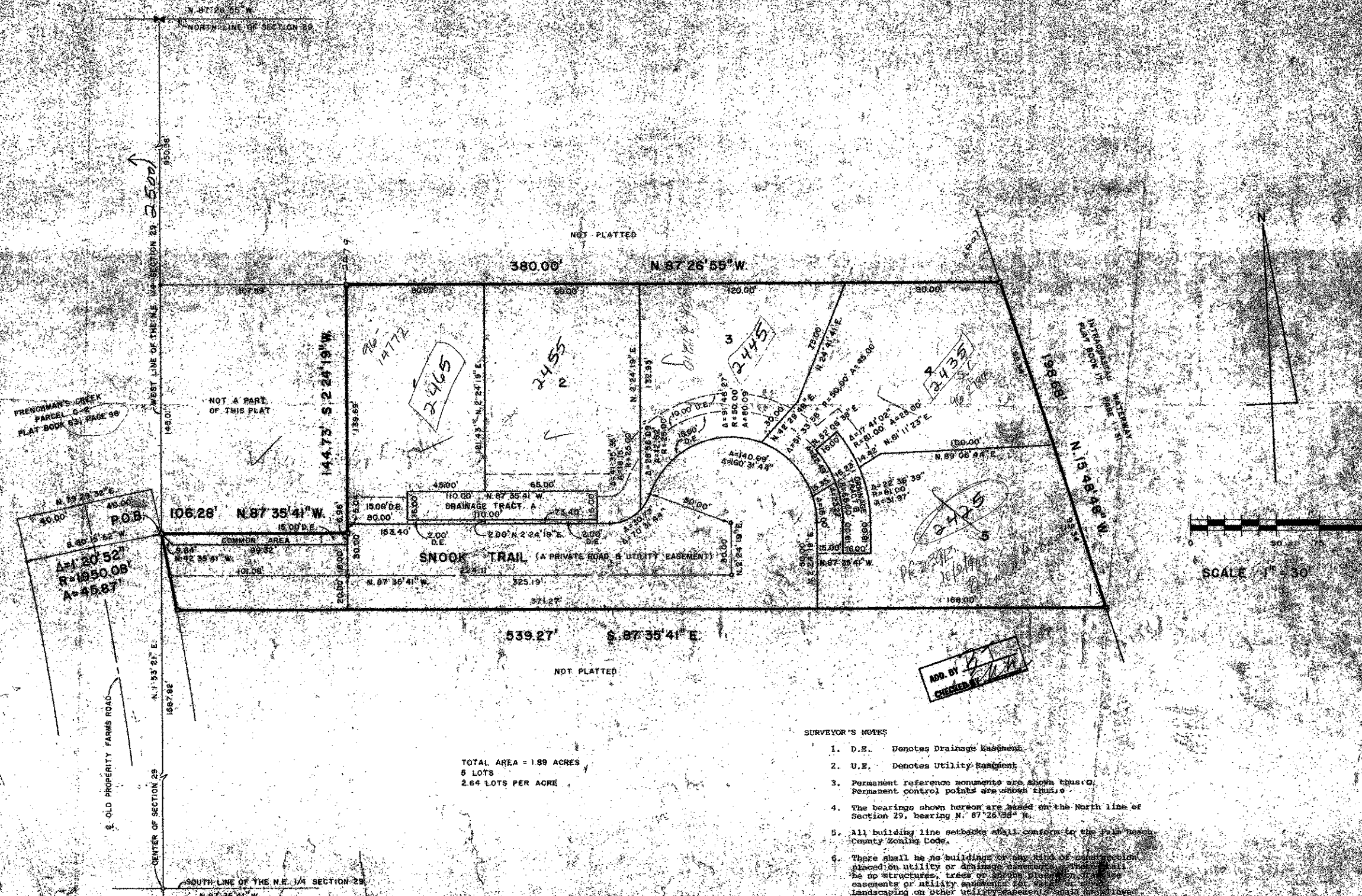


SNOOK HOLE
SECTION 29, TOWNSHIP 41 SOUTH, RANGE 43 EAST
PALM BEACH COUNTY, FLORIDA

SHEET 2 OF 2
MAY 1990



TOTAL AREA = 1.89 ACRES
5 LOTS
2.64 LOTS PER ACRE

- SURVEYOR'S NOTES**
1. D.E. Denotes Drainage Easement.
 2. U.E. Denotes Utility Easement.
 3. Permanent reference monuments are shown thus: \square . Permanent control points are shown thus: \circ .
 4. The bearings shown hereon are based on the North line of Section 29, bearing N. 87° 26' 55\" W.
 5. All building line setbacks shall conform to the Palm Beach County Zoning Code.
 6. There shall be no buildings or any kind of construction placed on utility or drainage easements. There shall be no structures, trees or shrubs placed on these easements or utility easements for any purpose. Landscaping on other utility easements shall be allowed only after consent of all utility companies utilizing the same. Where drainage easements are shown, they shall be subject to the drainage easement and utility easement plat.

ADD. BY [Signature]
CHECKED BY [Signature]

0583-001

SNOOK HOLE 6/6/84

SUNSHINE SURVEYING