

# PALM LAKES APARTMENT COMPLEX

## A PORTION OF DORFMAN P.U.D.

A PARCEL OF LAND LYING IN THE SOUTHWEST ONE-QUARTER OF SECTION 13, TOWNSHIP 43 SOUTH, RANGE 42 EAST, PALM BEACH COUNTY, FLORIDA - JANUARY, 1990

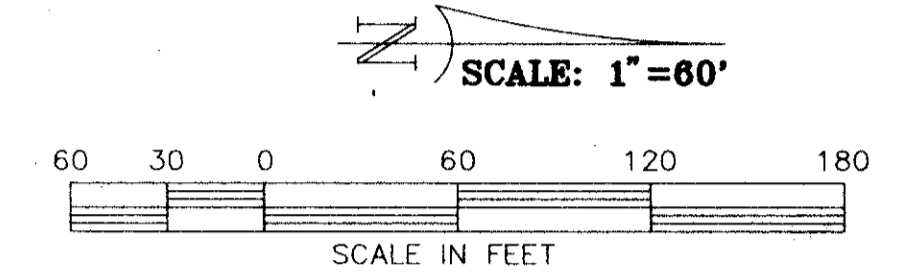
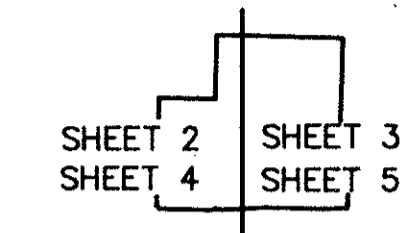
0492-002

92

### INDEX OF SHEETS

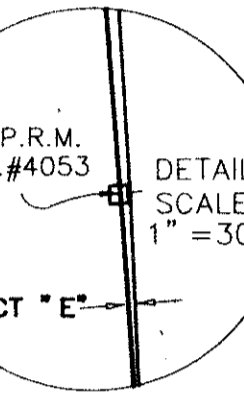
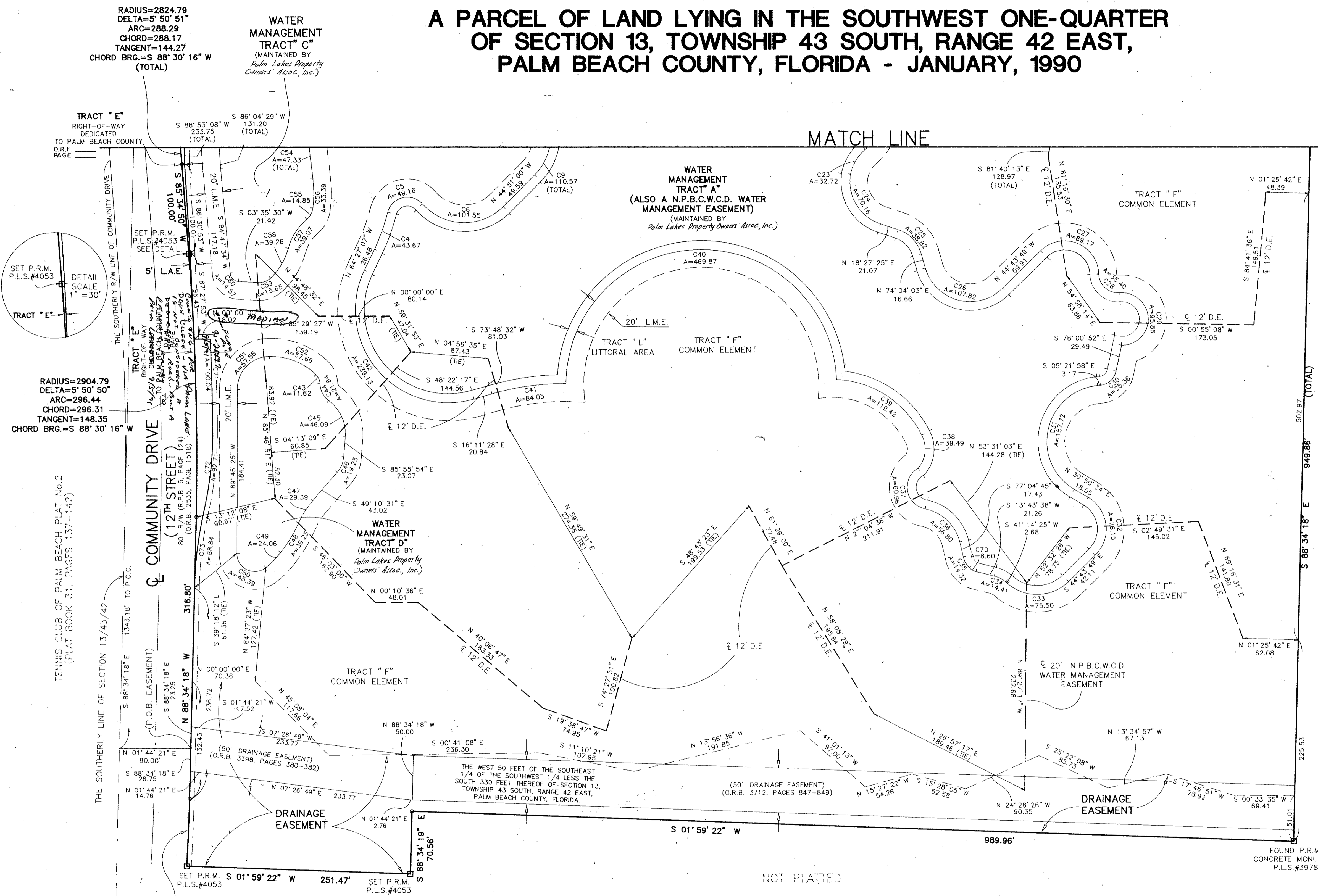
- SHEET 1 = COVER SHEET
- SHEET 2 = DRAINAGE AND LIMITED ACCESS EASEMENT
- SHEET 3 = DRAINAGE AND LIMITED ACCESS EASEMENT
- SHEET 4 = UTILITY EASEMENTS AND P.U.D. BUFFER
- SHEET 5 = UTILITY EASEMENTS AND P.U.D. BUFFER

STATE OF FLORIDA  
COUNTY OF PALM BEACH  
THIS PLAT WAS FILED FOR RECORD AT THIS DAY OF AD, 19 AND DULY RECORDED IN PLAT BOOK ON PAGES AND  
JOHN B. DUNKLE, CLERK  
CIRCUIT COURT  
BY:



### EASEMENT CURVE DATA:

CURVE	DELTA	RADIUS	ARC	CHORD	TANGENT	CHORD BRG
4	11° 18' 19"	221.00	43.67	43.60	21.91	N 70° 06' 47" W
5	124° 25' 58"	22.64	49.16	40.05	42.96	N 13° 33' 27" W
6	93° 30' 32"	62.23	101.55	90.65	66.16	N 01° 54' 16" E
9	101° 08' 55"	62.63	110.57	96.76	76.18	S 84° 34' 32" W
23	37° 29' 49"	50.00	32.72	32.14	16.97	S 58° 56' 18" E
24	80° 24' 04"	50.00	70.16	64.55	42.25	N 58° 39' 27" E
25	55° 36' 38"	40.00	38.82	37.32	21.09	N 46° 15' 44" E
26	118° 47' 52"	52.00	107.82	89.52	87.92	N 14° 40' 07" E
27	133° 16' 41"	38.33	89.17	70.36	88.75	N 21° 54' 31" E
28	93° 09' 31"	21.77	35.40	31.63	23.01	N 41° 58' 06" E
29	185° 22' 33"	29.63	95.86	59.19	631.11	N 88° 04' 38" E
30	72° 38' 54"	20.00	25.36	23.69	14.70	S 41° 41' 25" E
31	143° 47' 28"	62.85	157.72	119.47	192.22	S 77° 15' 42" E
32	104° 25' 37"	41.78	76.15	66.04	53.89	N 83° 03' 23" E
33	85° 58' 14"	50.31	75.50	68.61	46.89	S 01° 44' 42" E
34	27° 30' 47"	30.00	14.41	14.27	7.34	S 27° 29' 01" W
35	32° 48' 55"	25.00	14.32	14.12	7.36	S 60° 40' 17" W
36	65° 54' 57"	49.37	56.80	53.72	32.01	S 44° 07' 16" W
37	138° 24' 29"	25.23	60.96	47.18	66.44	S 80° 22' 02" W
38	68° 43' 32"	32.92	39.49	37.16	22.51	N 83° 50' 59" W
39	61° 07' 01"	111.96	119.42	113.84	66.10	S 33° 05' 18" W
40	177° 06' 59"	152.00	469.87	303.90	603.94	S 00° 51' 24" E
41	16° 32' 54"	291.00	84.05	83.76	42.32	S 07° 55' 01" E
42	131° 44' 21"	104.00	239.13	189.82	232.16	S 49° 40' 42" W
43	44° 49' 39"	14.86	11.62	11.33	6.13	N 66° 16' 43" E
44	52° 25' 37"	23.87	21.84	21.09	11.75	N 62° 28' 44" E
45	57° 48' 10"	45.69	46.09	44.16	25.22	N 65° 10' 01" E
46	36° 45' 23"	30.00	19.25	18.92	9.97	S 67° 33' 13" E
47	16° 50' 26"	100.00	29.39	29.29	14.80	S 57° 35' 44" E
48	13° 46' 16"	163.29	39.25	39.15	19.72	S 59° 07' 49" E
49	13° 25' 51"	102.65	24.06	24.01	12.09	S 45° 31' 46" E
50	131° 13' 23"	19.82	45.39	36.10	43.71	S 26° 47' 51" W
51	90° 02' 30"	36.62	57.56	51.81	36.65	N 46° 14' 13" W
52	45° 04' 52"	73.28	57.66	56.18	30.42	N 21° 19' 28" E
54	0° 28' 36"	5689.62	47.33	47.33	23.67	N 83° 08' 03" E
55	43° 46' 10"	19.43	14.85	14.49	7.81	S 61° 29' 16" E
56	13° 15' 18"	144.35	33.39	33.32	16.77	N 90° 00' 00" E
57	35° 29' 25"	63.08	39.07	38.45	20.19	S 57° 20' 54" E
58	31° 38' 17"	71.09	39.26	38.76	20.14	S 59° 16' 28" E
59	47° 02' 49"	19.06	15.65	15.21	8.30	S 18° 55' 55" E
60	86° 03' 53"	9.70	14.57	13.24	9.05	S 46° 37' 26" W
70	32° 50' 26"	15.00	8.60	8.48	4.42	S 30° 08' 51" W



RADIUS=2904.79  
DELTA=5° 50' 50"  
ARC=296.44  
CHORD=296.31  
TANGENT=148.35  
CHORD BRG.=S 88° 30' 16" W

TENNIS CLUB OF PALM BEACH PLAT No. 2 (PLAT BOOK 31, PAGES 137-142)

THE SOUTHERLY LINE OF SECTION 13/43/42 (P.O.B. EASEMENT)

SET P.R.M. P.L.S.#4053

RADIUS=1949.86  
DELTA=2° 13' 16"  
ARC=75.59  
CHORD=75.58  
TANGENT=37.80  
CHORD BRG.=N 87° 27' 42" W

**TRACT "E" ADDITIONAL RIGHT-OF-WAY CURVE DATA:**

CURVE	DELTA	RADIUS	ARC	CHORD	TANGENT	CHORD BRG
71	1° 57' 40"	2922.79	100.04	100.04	50.02	S 88° 28' 45" W
72	13° 16' 48"	400.00	92.71	92.51	46.56	N 83° 54' 00" W
73	11° 18' 42"	450.00	88.84	88.70	44.57	S 82° 54' 57" E

- LEGEND:**
- R/W = RIGHT-OF-WAY
  - P.U.D. = PLANNED UNIT DEVELOPMENT
  - R.P.B. = ROAD PLAT BOOK
  - O.R.B. = OFFICIAL RECORD BOOK
  - L.A.E. = LIMITED ACCESS EASEMENT
  - C1 = CURVE DATA NUMBER
  - N.P.B.C.W.C.D. = NORTHERN PALM BEACH COUNTY WATER CONTROL DISTRICT
  - D.E. = DRAINAGE EASEMENT
  - C = CENTERLINE
  - A=35.36 = ARC LENGTH
  - = CENTERLINE OF WATER MANAGEMENT EASEMENT
  - - - = CENTERLINE OF 12' DRAINAGE EASEMENT
  - = PERMANENT REFERENCE MONUMENT
  - L.M.E. = LAKE MAINTENANCE EASEMENT

NOT PLATTED

FOUND P.R.M. CONCRETE MONUMENT P.L.S.#3978

0492-002  
Pt. 85-171

66/92  
**KEA** King Engineering Associates, Inc.  
5440 Beaumont Center Blvd., Suite 460  
Tampa, Florida 33634  
(813) 886-0111

PALM LAKES APARTMENT COMPLEX

PALM LAKES APARTMENT COMPLEX  
 92  
 1558  
 RS/SE  
 33409  
 05-171  
 DORFMAN  
 13/43/42