

PALM LAKES APARTMENT COMPLEX

A PORTION OF DORFMAN P.U.D.

A PARCEL OF LAND LYING IN THE SOUTHWEST ONE-QUARTER OF SECTION 13, TOWNSHIP 43 SOUTH, RANGE 42 EAST, PALM BEACH COUNTY, FLORIDA - JANUARY, 1990

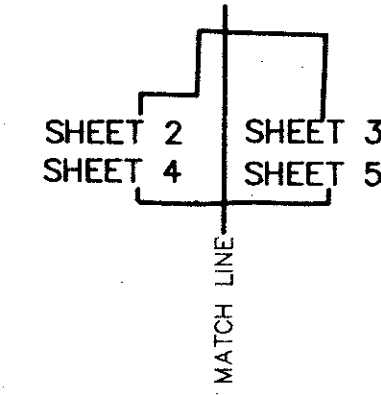
0492-002

93

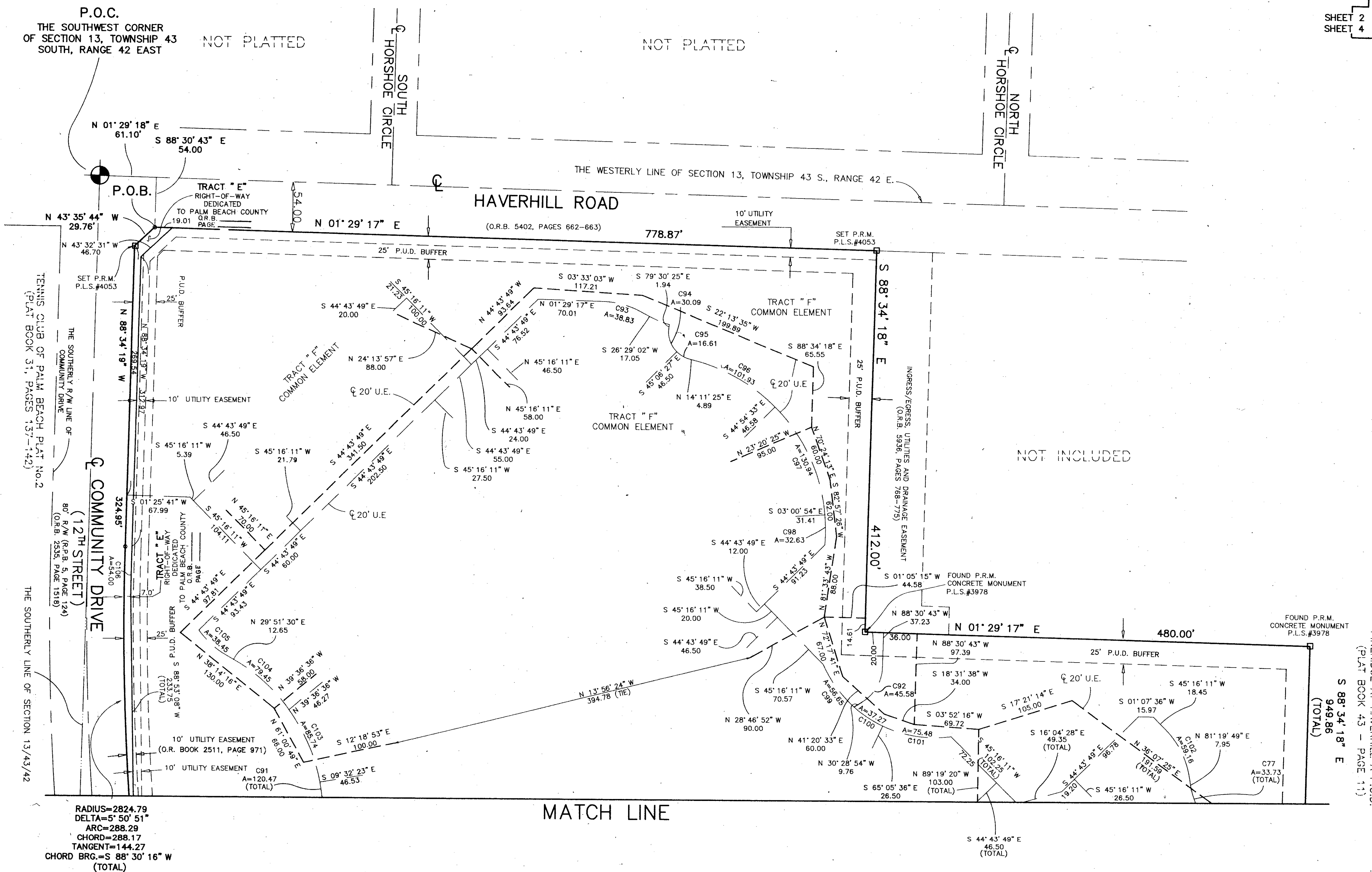
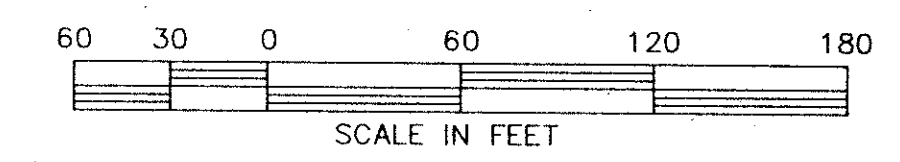
INDEX OF SHEETS

- SHEET 1 = COVER SHEET
- SHEET 2 = DRAINAGE AND LIMITED ACCESS EASEMENT
- SHEET 3 = DRAINAGE AND LIMITED ACCESS EASEMENT
- SHEET 4 = UTILITY EASEMENTS AND P.U.D. BUFFER
- SHEET 5 = UTILITY EASEMENTS AND P.U.D. BUFFER

STATE OF FLORIDA
COUNTY OF PALM BEACH
THIS PLAT WAS FILED FOR RECORD AT THIS DAY OF AD, 19 AND DULY RECORDED IN PLAT BOOK ON PAGES AND
JOHN B. DUNKLE, CLERK
CIRCUIT COURT
BY:



SCALE: 1"=60'



EASEMENT CURVE DATA:

CURVE	DELTA	RADIUS	ARC	CHORD	TANGENT	CHORD BRG
77	23° 51' 43"	81.00	33.73	33.49	17.12	N 69° 23' 58" E
91	36° 08' 16"	191.00	120.47	118.48	62.31	N 82° 31' 15" W
92	58° 01' 49"	45.00	45.58	43.65	24.96	S 59° 29' 48" W
93	24° 59' 45"	89.00	38.83	38.52	19.73	S 13° 59' 10" W
94	55° 36' 36"	31.00	30.09	28.92	16.35	N 72° 41' 51" E
95	30° 42' 08"	31.00	16.61	16.41	8.51	N 29° 32' 29" E
96	30° 54' 02"	189.00	101.93	100.70	52.24	S 29° 38' 26" W
97	39° 41' 46"	189.00	130.94	128.34	68.22	S 64° 56' 20" W
98	9° 53' 34"	189.00	32.63	32.59	16.36	S 89° 44' 00" W
99	24° 46' 36"	131.00	56.65	56.21	28.77	N 53° 35' 38" E
100	16° 17' 56"	131.00	37.27	37.14	18.76	N 33° 03' 22" E
101	33° 00' 42"	131.00	75.48	74.44	38.82	N 08° 24' 03" E
102	36° 03' 39"	94.00	59.16	58.19	30.60	S 63° 18' 00" W
103	25° 43' 07"	191.00	85.74	85.02	43.60	S 66° 33' 03" W
104	23° 49' 59"	191.00	79.45	78.88	40.31	S 41° 46' 30" W
105	24° 45' 06"	89.00	38.45	38.15	19.53	N 42° 14' 03" E
106	1° 05' 53"	2817.79	54.00	54.00	27.00	S 89° 07' 16" E

- LEGEND:**
- R/W = RIGHT-OF-WAY
 - P.U.D. = PLANNED UNIT DEVELOPMENT
 - R.P.B. = ROAD PLAT BOOK
 - O.R.B. = OFFICIAL RECORD BOOK
 - U.E. = UTILITY EASEMENT
 - = CENTERLINE OF 20.00' UTILITY EASEMENT
 - = CENTERLINE OF 20.00' WASTEWATER EASEMENT
 - W.W.E. = WASTEWATER EASEMENT
 - = CENTERLINE OF 20.00' WASTEWATER EASEMENT
 - C1 = CURVE DATA NUMBER
 - A=36.80 = ARC LENGTH
 - P.O.C. = POINT OF COMMENCEMENT
 - P.O.B. = POINT OF BEGINNING
 - = PERMANENT REFERENCE MONUMENT
 - ⊙ = CENTERLINE

0492-002
Pt. 85-171

PALM LAKES APARTMENT COMPLEX
 SHEET 93
 PLAT BOOK 43 - PAGE 111
 85-171
 19/03/02

66/93

SHEET 4 OF 5

KEA King Engineering Associates, Inc.
 5440 Beaumont Center Blvd., Suite 460
 Tampa, Florida 33634
 (813) 886-0111

PALM LAKES APARTMENT COMPLEX