

PALM LAKES APARTMENT COMPLEX

A PORTION OF DORFMAN P.U.D.

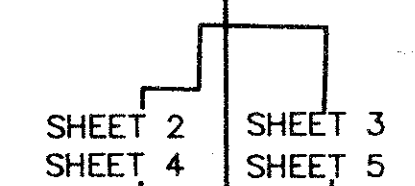
A PARCEL OF LAND LYING IN THE SOUTHWEST ONE-QUARTER OF SECTION 13, TOWNSHIP 43 SOUTH, RANGE 42 EAST, PALM BEACH COUNTY, FLORIDA - JANUARY, 1990

0492-002

94

INDEX OF SHEETS
 SHEET 1 = COVER SHEET
 SHEET 2 = DRAINAGE AND LIMITED ACCESS EASEMENT
 SHEET 3 = DRAINAGE AND LIMITED ACCESS EASEMENT
 SHEET 4 = UTILITY EASEMENTS AND P.U.D. BUFFER
 SHEET 5 = UTILITY EASEMENTS AND P.U.D. BUFFER

STATE OF FLORIDA
 COUNTY OF PALM BEACH
 THIS PLAN WAS FILED FOR RECORD AT THIS DAY OF AD. 19 AND DULY RECORDED IN PLAT BOOK ON PAGES AND
 JOHN B. DUNKLE, CLERK
 CIRCUIT COURT
 BY:



SCALE: 1"=60'



EASEMENT CURVE DATA:

CURVE	DELTA	RADIUS	ARC	CHORD	TANGENT	CHORD BRG
74	60° 18' 28"	64.00	67.36	64.30	37.18 N 15° 06' 57" E	
75	12° 19' 55"	61.00	13.13	13.10	6.59 S 08° 52' 20" E	
76	47° 58' 33"	81.00	51.08	49.60	27.14 S 21° 16' 54" W	
77	23° 51' 43"	81.00	33.73	33.49	17.12 N 69° 23' 58" E	
78	26° 33' 38"	81.00	37.55	37.21	19.12 N 44° 11' 17" E	
79	42° 13' 18"	109.00	80.32	78.52	42.08 N 64° 48' 41" W	
80	84° 10' 14"	59.00	86.67	79.09	53.28 N 07° 24' 52" E	
81	56° 23' 00"	79.00	77.74	74.64	42.34 N 16° 20' 24" W	
82	25° 18' 50"	164.00	72.46	71.87	36.83 N 24° 30' 30" E	
83	36° 38' 57"	164.00	104.90	103.12	54.32 N 55° 29' 24" E	
84	5° 07' 03"	346.00	30.90	30.89	15.46 S 71° 15' 21" W	
85	16° 46' 34"	346.00	101.31	100.95	51.02 S 60° 18' 32" W	
86	8° 31' 18"	346.00	51.46	51.41	25.78 S 47° 39' 36" W	
87	38° 49' 59"	261.00	176.90	173.53	92.00 S 24° 47' 23" W	
88	21° 33' 51"	261.00	98.23	97.65	49.70 S 05° 24' 32" E	
89	10° 40' 59"	134.00	24.98	24.95	12.53 N 10° 50' 59" W	
90	121° 03' 23"	134.00	283.12	233.32	237.12 N 55° 01' 12" E	
91	36° 08' 16"	191.00	120.47	118.48	62.31 N 82° 31' 15" W	

LEGEND:
 R/W = RIGHT-OF-WAY
 P.U.D. = PLANNED UNIT DEVELOPMENT
 R.P.B. = ROAD PLAT BOOK
 O.R.B. = OFFICIAL RECORD BOOK
 U.E. = UTILITY EASEMENT
 --- = CENTERLINE OF 20.00' UTILITY EASEMENT
 - - - = CENTERLINE OF 20.00' WASTEWATER EASEMENT
 W.W.E. = WASTEWATER EASEMENT
 C1 = CURVE DATA NUMBER
 A=36.80 = ARC LENGTH
 □ = PERMANENT REFERENCE MONUMENT
 ⊕ = CENTERLINE

0492-002
 Ret. 85-171

66/94

SHEET 5 OF 5

KEA King Engineering Associates, Inc.
 5440 Beaumont Center Blvd., Suite 460
 Tampa, Florida 33634
 (813) 886-0111

PALM LAKES APARTMENT COMPLEX

RADIUS=2824.79
 DELTA=5° 50' 51"
 ARC=288.29
 CHORD=288.17
 TANGENT=144.27
 CHORD BRG.=S 88° 30' 16" W
 (TOTAL)

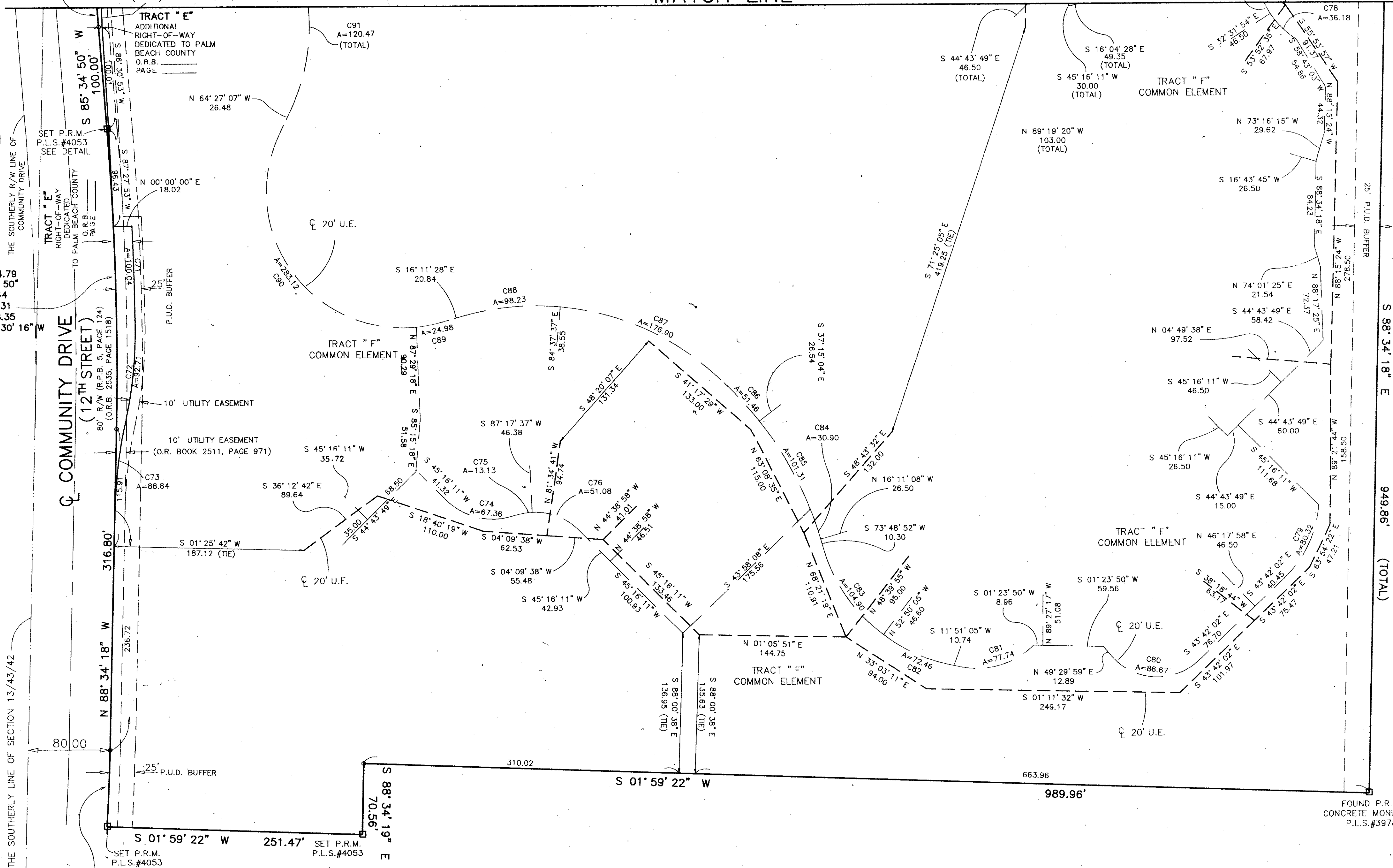
RADIUS=2904.79
 DELTA=5° 50' 50"
 ARC=296.44
 CHORD=296.31
 TANGENT=148.35
 CHORD BRG.=S 88° 30' 16" W

RADIUS=1949.86
 DELTA=2° 13' 16"
 ARC=75.59
 CHORD=75.58
 TANGENT=37.80
 CHORD BRG.=N 87° 27' 42" W

TRACT "E" ADDITIONAL RIGHT-OF-WAY CURVE DATA:

CURVE	DELTA	RADIUS	ARC	CHORD	TANGENT	CHORD BRG
71	1° 57' 40"	2922.79	100.04	50.02	S 88° 28' 45" W	
72	13° 16' 48"	400.00	92.71	92.51	46.56 N 83° 54' 00" W	
73	11° 18' 42"	450.00	88.84	88.70	44.57 S 82° 54' 57" E	

PALM LAKES APARTMENT COMPLEX
 SHEET 94
 1558
 REUSE
 3349
 66
 30
 85-171
 DORFMAN P.U.D.
 12/14/42
 TAZ 169



NOT PLATTED