

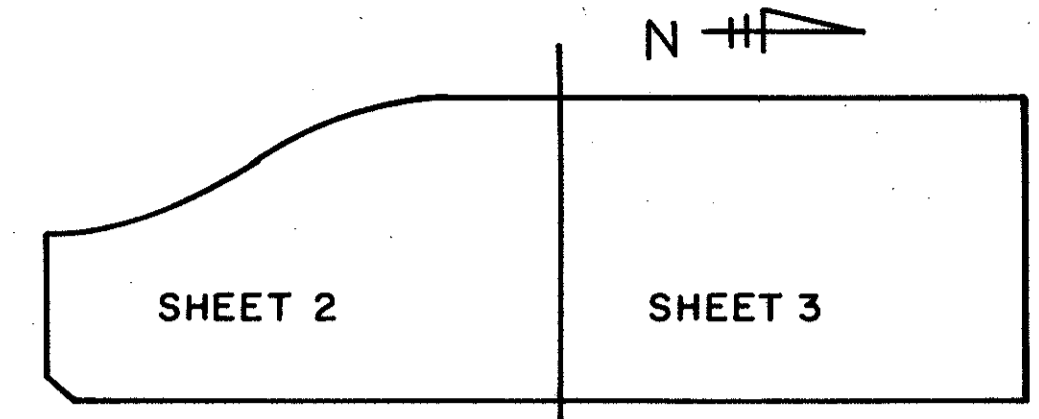
# WEST BOCA SQUARE

BEING A PARCEL OF LAND IN THE SOUTHEAST QUARTER  
(S.E.1/4) OF SECTION 24, TOWNSHIP 47 SOUTH, RANGE 41 EAST  
PALM BEACH COUNTY, FLORIDA  
SHEET 2 OF 3 JUNE, 1990

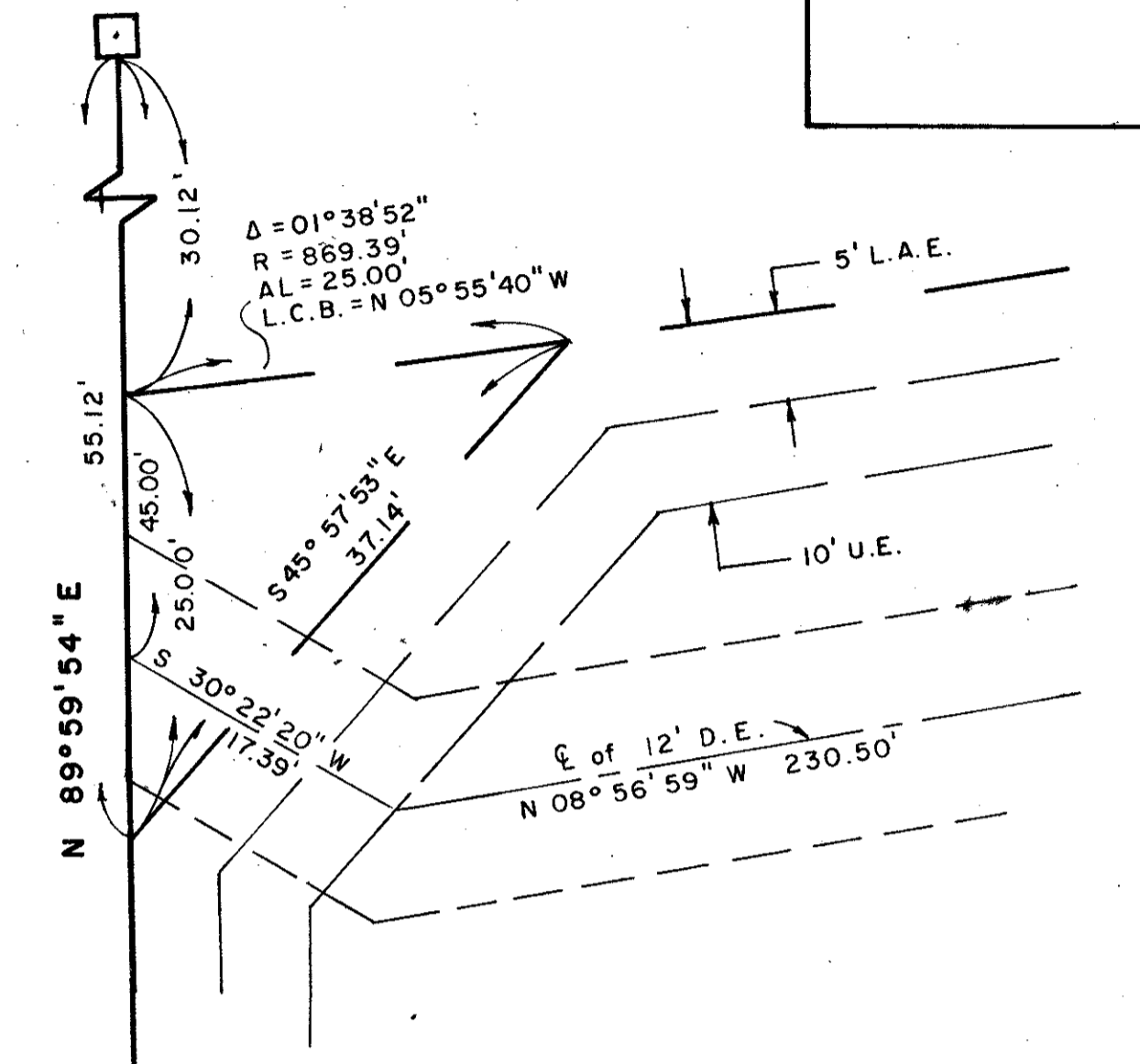
96

BOCA GRANDE O.R.B. 2669, PAGE 1449-1453

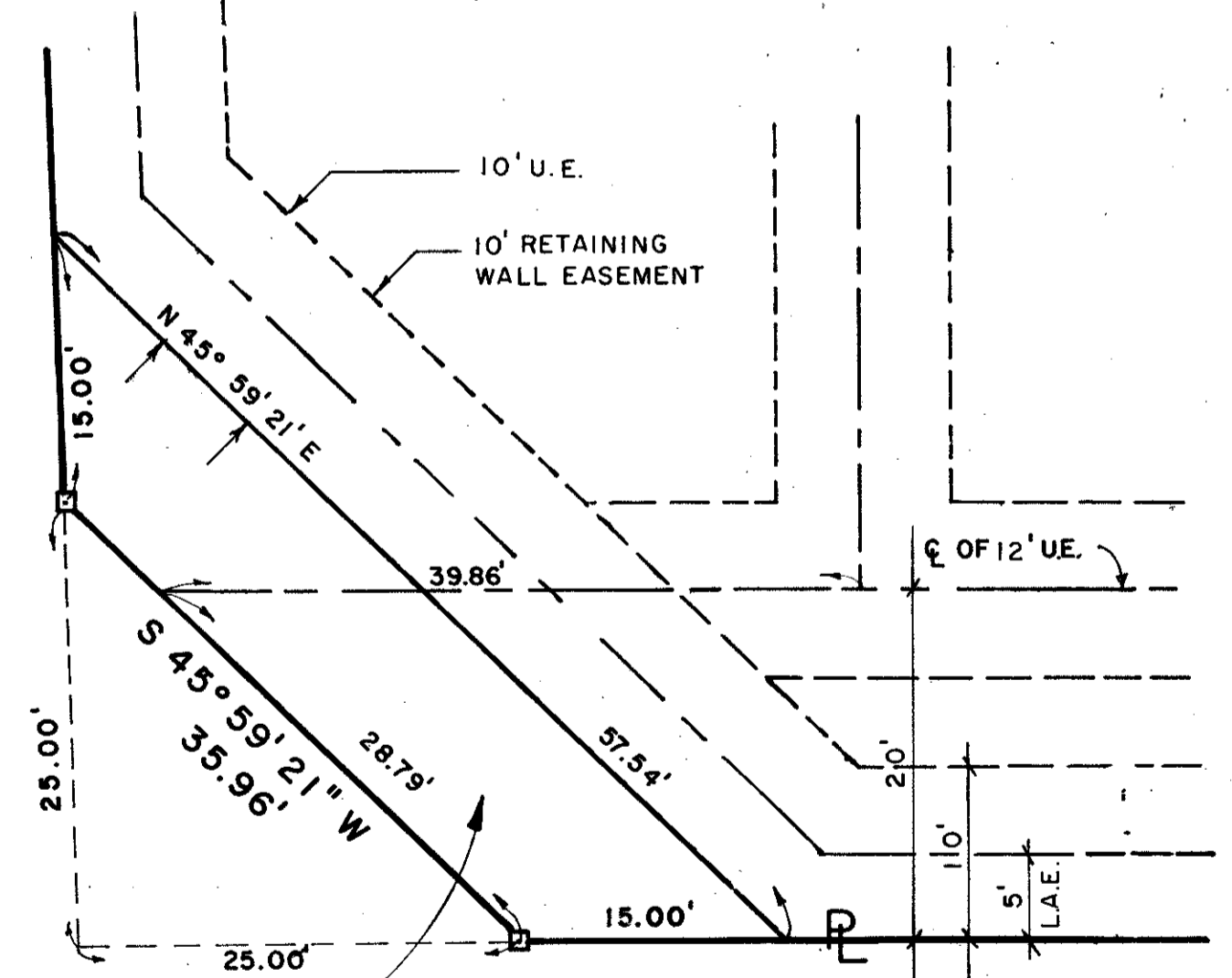
(EXISTING)  
60' INGRESS/EGRESS  
EASEMENT  
O.R.B. 2669, PG 1449-1453



KEY MAP

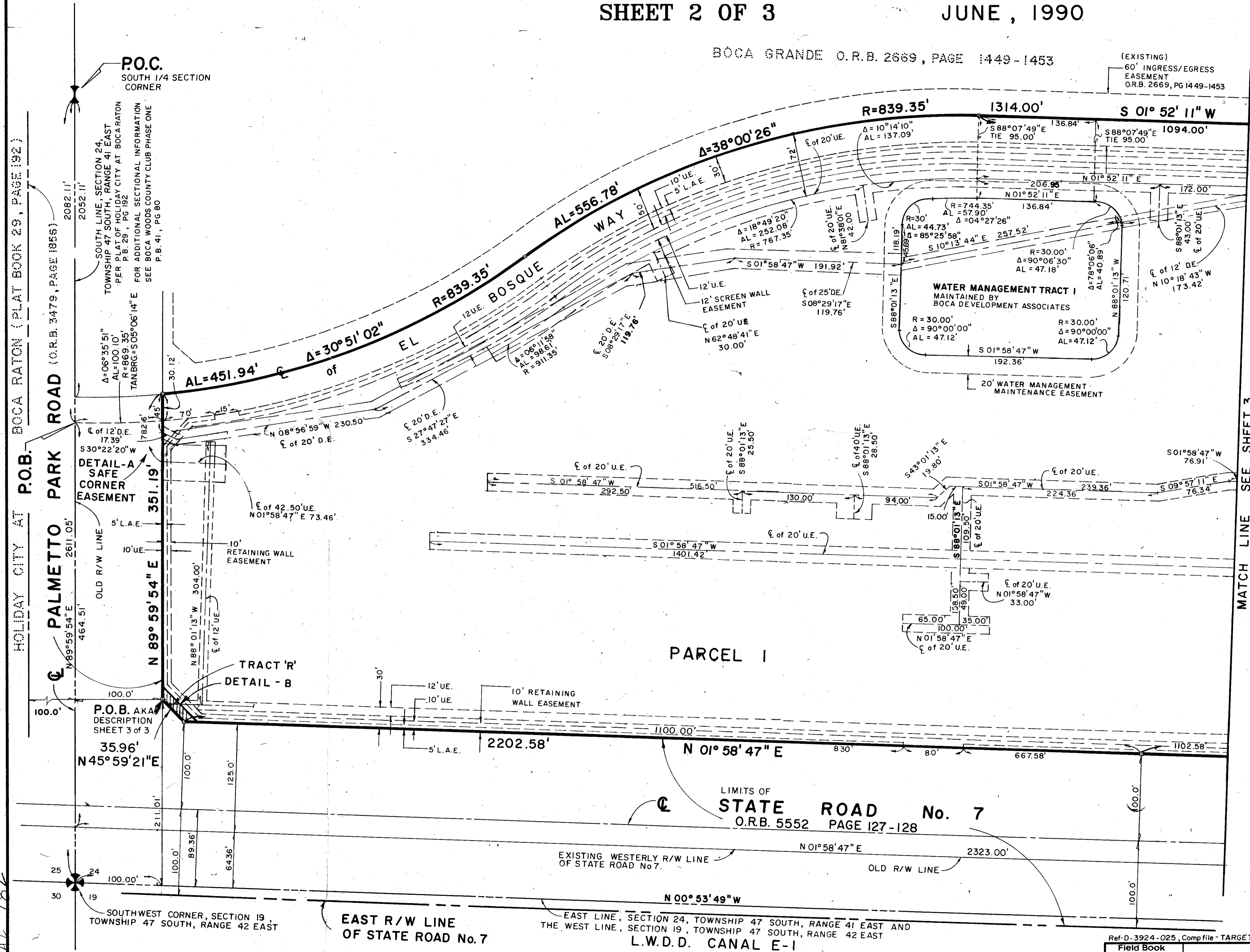


SAFE CORNER  
EASEMENT  
DETAIL - A



DETAIL - B

5000-183  
Ret. 80-114B 6/6/90



BOCA RATON (PLAT BOOK 29, PAGE 192)

HOLIDAY CITY AT P.O.B.

TAV 782

MATCH LINE SEE SHEET 3

LIMITS OF  
STATE ROAD No. 7  
O.R.B. 5552 PAGE 127-128

EXISTING WESTERLY R/W LINE  
OF STATE ROAD No. 7

EAST R/W LINE  
OF STATE ROAD No. 7

EAST LINE, SECTION 24, TOWNSHIP 47 SOUTH, RANGE 41 EAST AND  
THE WEST LINE, SECTION 19, TOWNSHIP 47 SOUTH, RANGE 42 EAST  
L.W.D.D. CANAL E-1

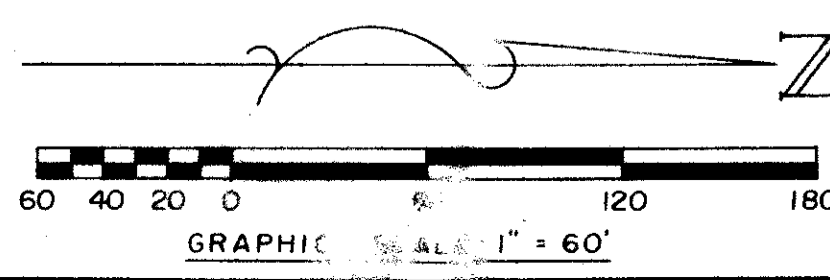
Ref-D-3924-025, Compile - TARGET

Field Book  
No. B-234 Pg. 43  
Design  
Drawn  
J. SHEPHERD  
Checked  
W. MITZELFELD

R.E.O. SURVEYORS, INC  
WEST PALM BEACH  
FLORIDA

**WEST BOCA SQUARE**

Job No. 89-076  
Scale AS SHOWN  
Date OCT., 1989  
Sheet 2  
of 3  
File No. BF-2445



WEST BOCA SQUARE  
PAGE 96  
RE-5E  
33403