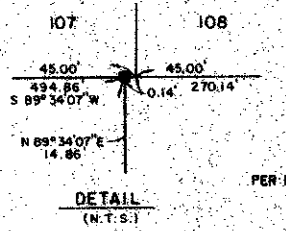
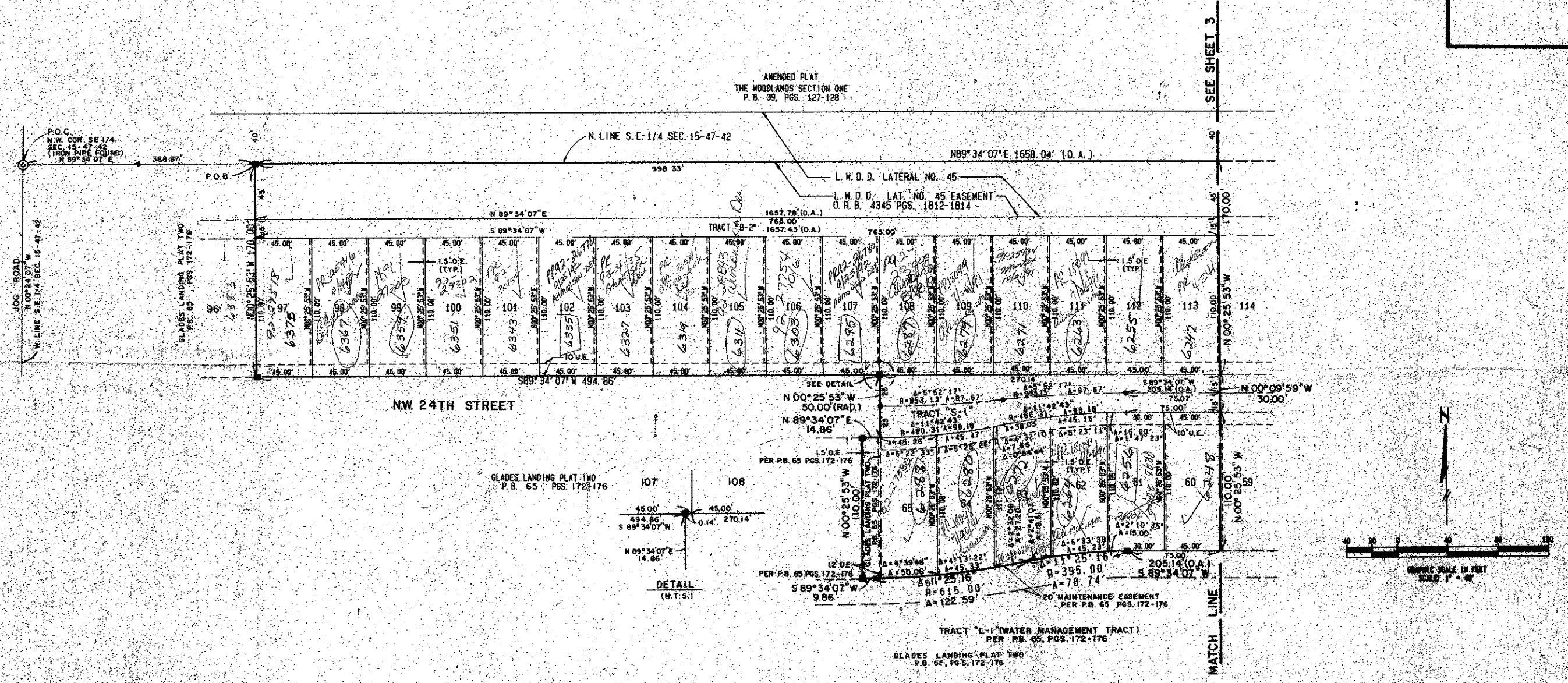
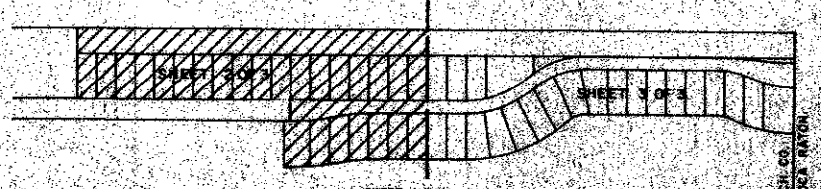


GLADES LANDING PLAT THREE A PLANNED UNIT DEVELOPMENT

BEING A PLAT OF A PORTION OF THE S.E. 1/4 OF SECTION 15, TOWNSHIP 47 SOUTH, RANGE 42 EAST AND A REPLAT OF A PORTION OF GLADES LANDING PHASE 1B AS RECORDED IN PLAT BOOK 63, PAGES 200 AND 201, AND A REPLAT OF TRACT A-2 OF GLADES LANDING PLAT TWO AS RECORDED IN PLAT BOOK 65 PAGES 172 THROUGH 176 OF THE PUBLIC RECORDS OF PALM BEACH COUNTY, FLORIDA.
MARCH, 1990



APP. BY *BT*
CHECKED BY *[Signature]*



66/116

0434-003
Per 84-38

GLADES LANDING PLAT 3

METRIC ENGINEERING
 INCORPORATED
 1000 S. PALM BEACH BLVD.
 WEST PALM BEACH, FL 33411
 TEL: (407) 833-1111
 FAX: (407) 833-1112

PLAT THREE
GLADES LANDING
SHEET 3 OF 3

DIVISION OF GLADES LANDING
 BOOK 63, PAGES 200 AND 201
 ZONING MAP 8
 ZONING CODE 33-121
 TO HAVE SURVEYED AND RECORDED