

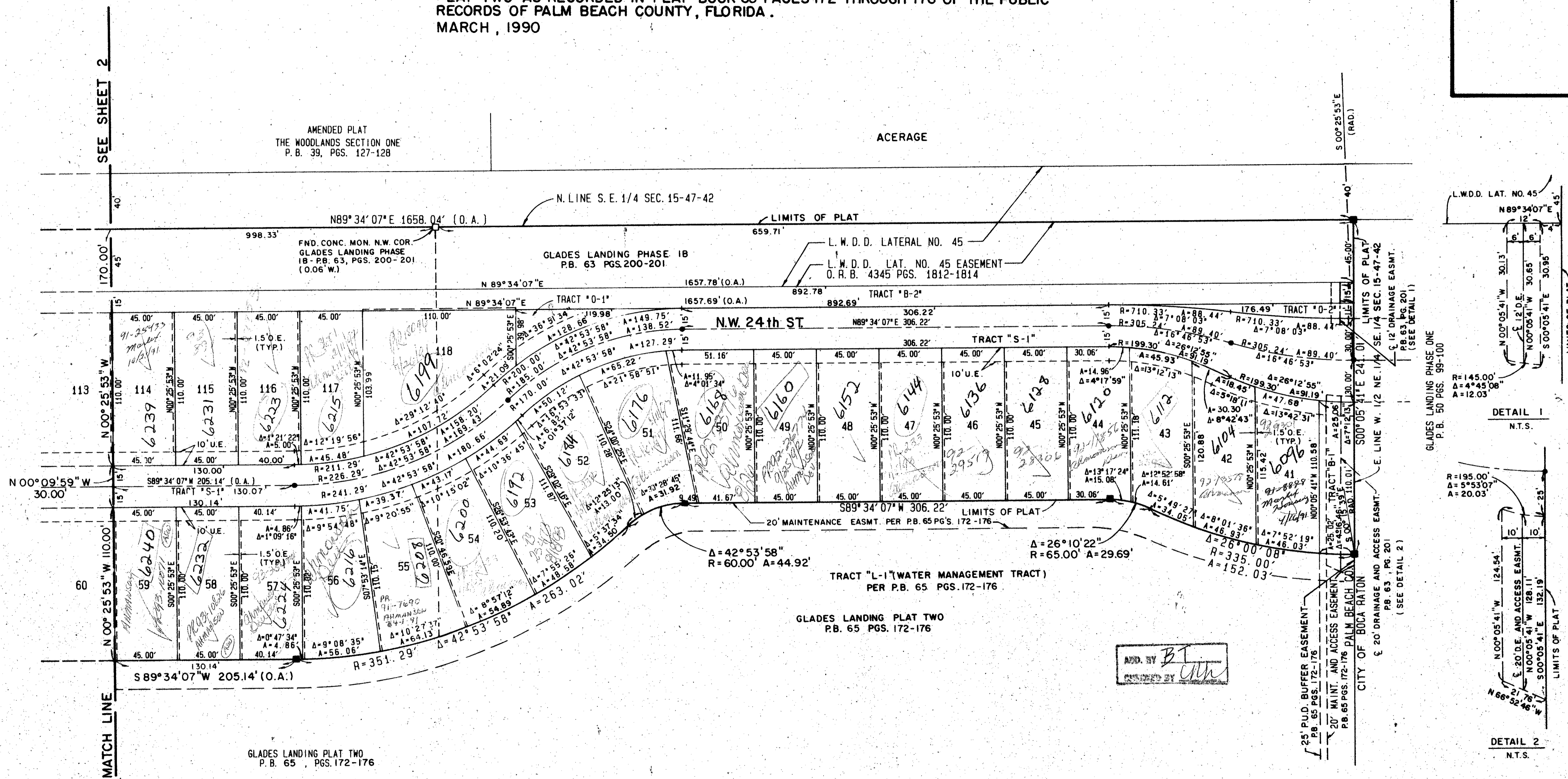
GLADES LANDING PLAT THREE

A PLANNED UNIT DEVELOPMENT

BEING A PLAT OF A PORTION OF THE S.E. 1/4 OF SECTION 15, TOWNSHIP 47 SOUTH, RANGE 42 EAST AND A REPLAT OF A PORTION OF GLADES LANDING PHASE 1B AS RECORDED IN PLAT BOOK 63, PAGES 200 AND 201, AND A REPLAT OF TRACT A-2 OF GLADES LANDING PLAT TWO AS RECORDED IN PLAT BOOK 65 PAGES 172 THROUGH 176 OF THE PUBLIC RECORDS OF PALM BEACH COUNTY, FLORIDA.
MARCH, 1990

0434-003

117



SEE SHEET 2

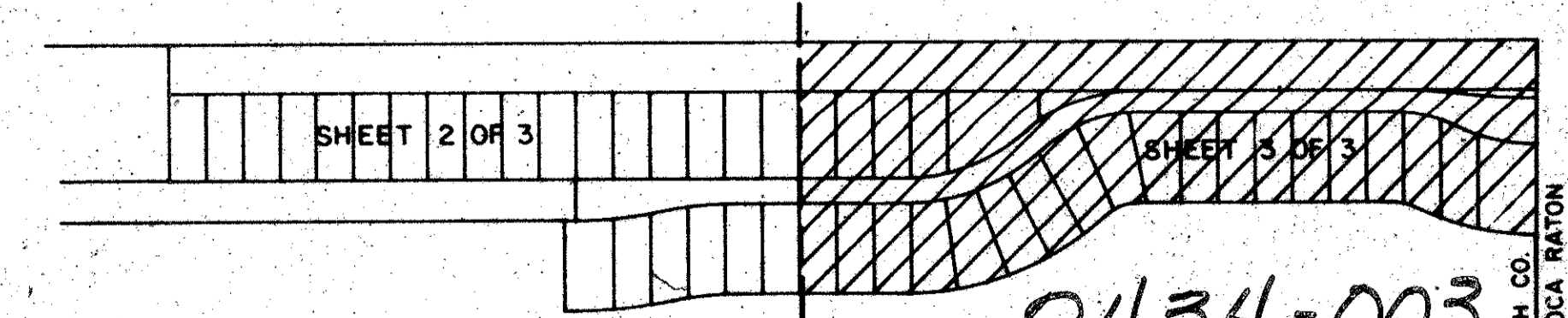
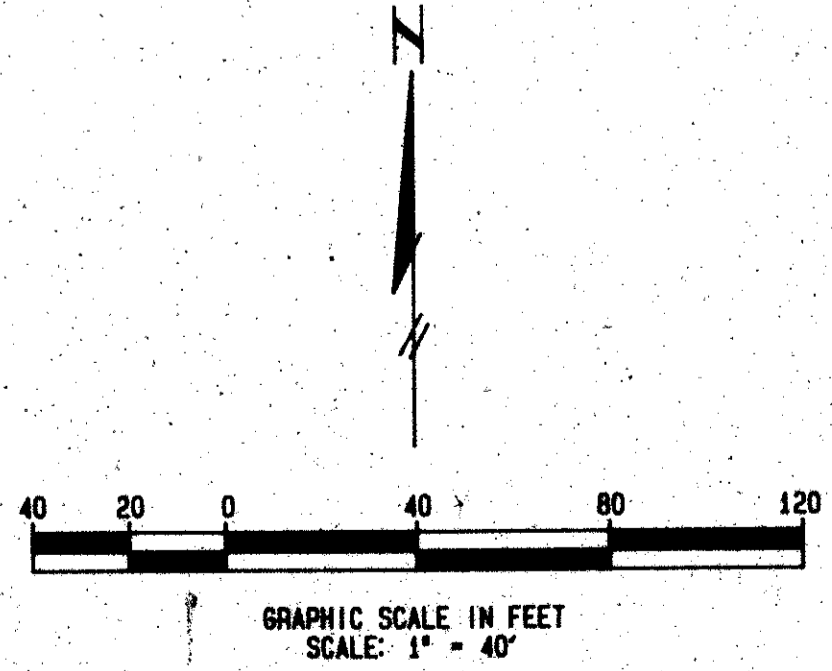
MATCH LINE

DETAIL 1
N.T.S.

DETAIL 2
N.T.S.

TAZ 608

ADD. BY BT
CHECKED BY [Signature]



0434-003
Plat 84-38

66/117

GLADES LANDING PLAT 3

SUBDIVISION: GLADES LANDING PLAT 3
PAGE 117
BLOCK MAP # 2308
PLANNING # RS/SE
ZONING # RS/SE
DATE # 04-38
DRAWN BY # 1517/47 *SAME*

METRIC ENGINEERING INC.
ENGINEERS - PLANNERS - SURVEYORS
MIAMI - FORT LAUDERDALE
WEST PALM BEACH - PANAMA CITY

DIG
C.A.D.D.
INSTRUMENTED
D.R.

**PLAT THREE
GLADES LANDING
SHEET 3 OF 3**