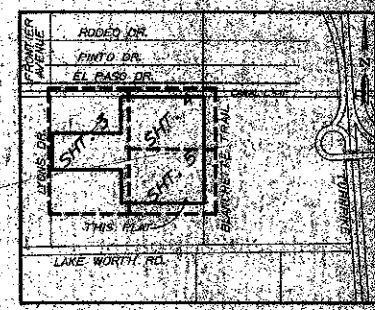
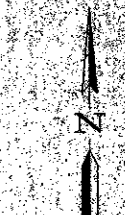
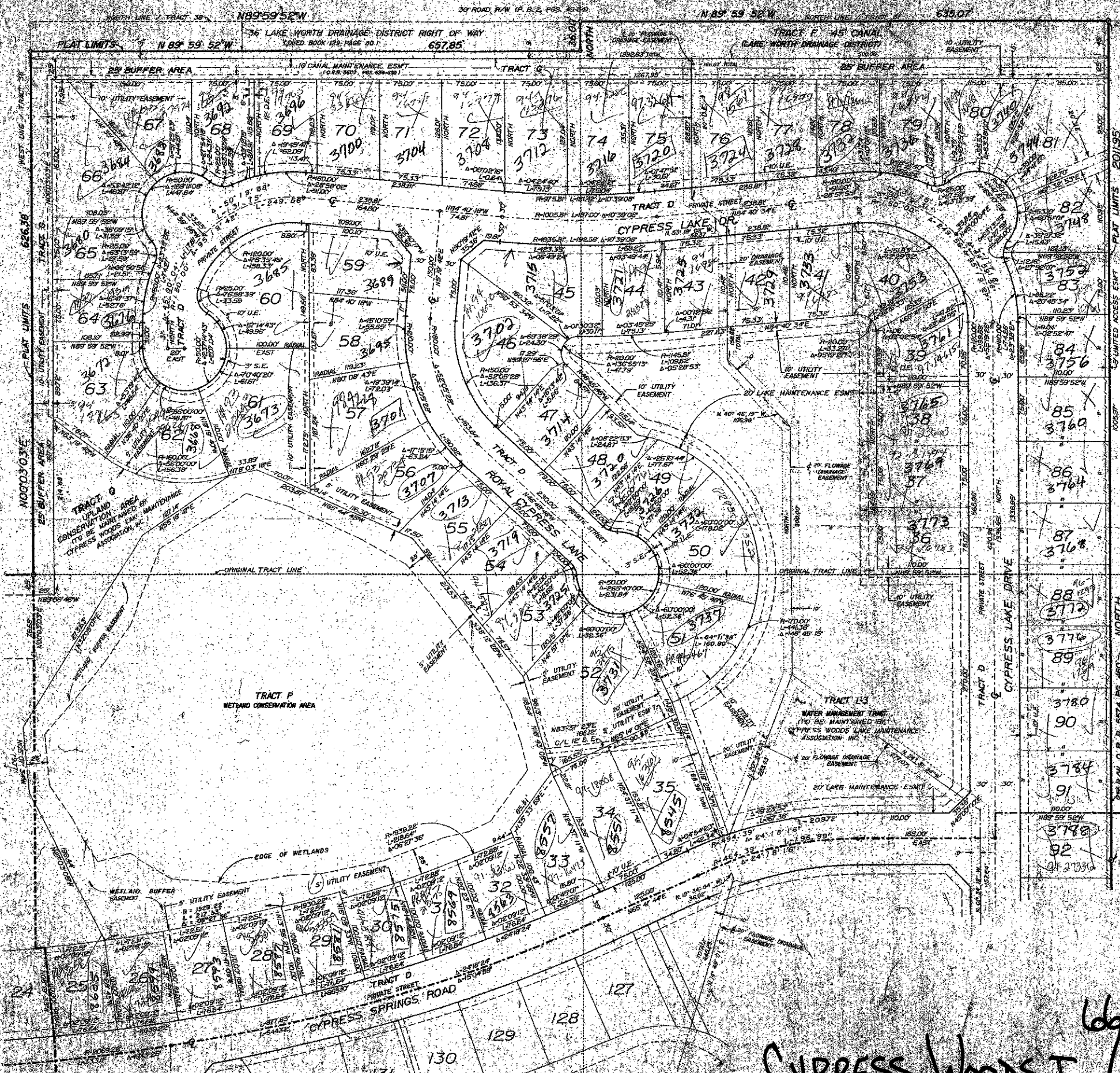


PALM BEACH RANCHETTES UNIT A  
(UNRECORDED)

130

A PART OF CYPRESS WOODS, PLANNED UNIT DEVELOPMENT  
**CYPRESS WOODS I**  
 LYING IN PORTIONS OF SECTIONS 19, 20, AND 29, TOWNSHIP 44 SOUTH, RANGE 42 EAST  
 BEING A REPLAT OF A PORTION OF TRACTS 37, 38, 41, 42, 43, 44, 53 AND 54,  
 BLOCK 24 OF PALM BEACH FARMS COMPANY PLAT NO. 3, PLAT BOOK 2, PAGES 45-54,  
 INCLUSIVE, OF THE PUBLIC RECORDS OF PALM BEACH COUNTY, FLORIDA  
 AUGUST 1988



- SURVEYOR'S NOTES:**
1. BEARINGS SHOWN HEREIN ARE RELATIVE TO AN ASSUMED BEARING OF NORTH, THE CENTERLINE BEARING OF THE PUBLIC RIGHT-OF-WAY AS LOCATED IN SECTION 20, TOWNSHIP 44 SOUTH, RANGE 42 EAST, PALM BEACH COUNTY, FLORIDA.
  2. S DENOTES PERMANENT REFERENCE MONUMENT.
  3. C DENOTES PERMANENT CONTROL POINT.
  4. THIS PLAT CONFORMS TO THE MINIMUM TECHNICAL STANDARDS FOR LAND SURVEYING IN THE STATE OF FLORIDA, AS ADOPTED BY THE DEPARTMENT OF PROFESSIONAL REGULATION, BOARD OF LAND SURVEYORS (CHAPTER 61B, FLORIDA ADMINISTRATIVE CODE).
  5. THERE MAY BE ADDITIONAL RESTRICTIONS THAT ARE NOT RECORDED IN THIS PLAT THAT MAY BE FOUND IN THE PUBLIC RECORDS OF PALM BEACH COUNTY.
  6. CURVILINEAR LOT LINES ARE NON-RADIAL, UNLESS OTHERWISE NOTED.
  7. D. E. DENOTES DRAINAGE EASEMENT.
  8. U. E. DENOTES UTILITY EASEMENT.
  9. S. S. E. DENOTES SIDEWALK EASEMENT.

THIS INSTRUMENT WAS PREPARED BY RONALD E. ROONEY IN AND FOR THE OFFICES OF CONSULTECH ENGINEERING, INC. 20 E. SAMPLE ROAD, SUITE 100, POMPANO BEACH, FLORIDA 33064

ADD. BY [Signature] 0515-001  
 CHECKED BY [Signature] Pet. 86-98

66  
 Cypress Woods I / 130

**ETE** CONSULTECH ENGINEERING, INC.  
 CONSULTING ENGINEERS & PLANNERS  
 FOURTH FLOOR  
 20 EAST SAMPLE ROAD  
 POMPANO BEACH, FLORIDA 33064