

THIS INSTRUMENT WAS PREPARED BY RONALD E. ROONEY
IN AND FOR THE OFFICES OF CONSULT-TECH ENGINEERING, INC.
50 E. SAMPLE ROAD FOURTH FLOOR
POMPANO BEACH, FLORIDA 33064

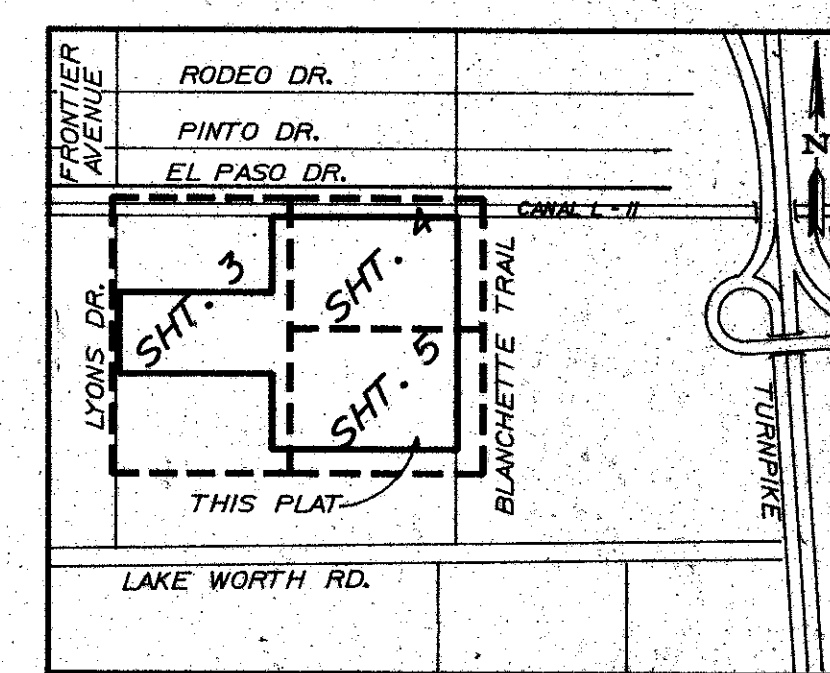
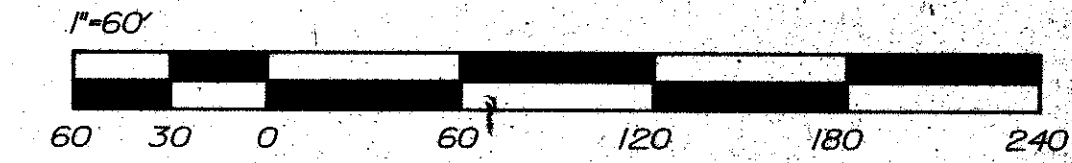
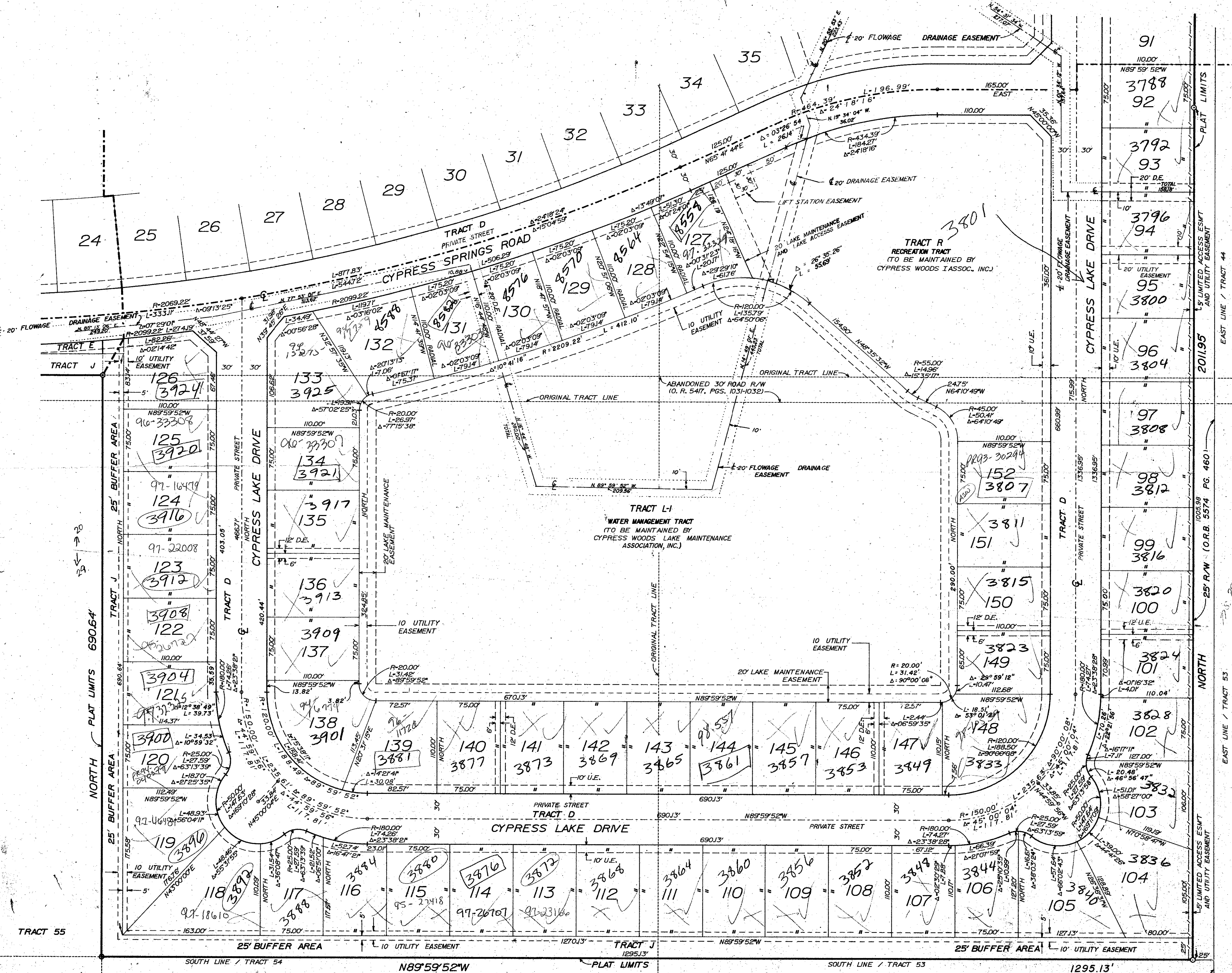
A PART OF CYPRESS WOODS, PLANNED UNIT DEVELOPMENT
CYPRESS WOODS I
LYING IN PORTIONS OF SECTIONS 19, 20, AND 29, TOWNSHIP 44 SOUTH, RANGE 42 EAST
BEING A REPLAT OF A PORTION OF TRACTS 37, 38, 41, 42, 43, 44, 53 AND 54,
BLOCK 24 OF "PALM BEACH FARMS COMPANY PLAT NO. 3", PLAT BOOK 2, PAGES 45-54,
INCLUSIVE, OF THE PUBLIC RECORDS OF PALM BEACH COUNTY, FLORIDA.
AUGUST 1988

0515-001

131

STATE OF FLORIDA SS
COUNTY OF PALM BEACH
THIS PLAT WAS FILED FOR RECORD
AT THIS DAY
OF _____, A.D. 1988, AND
DULY RECORDED IN PLAT BOOK
ON PAGES THRU
JOHN B. DUNKLE,
CLERK OF THE CIRCUIT COURT
BY: _____ D.C.

SHEET 5 OF 5



KEY MAP

- SURVEYOR'S NOTES:**
1. BEARINGS SHOWN HEREON ARE RELATIVE TO AN ASSUMED BEARING OF NORTH, THE CENTERLINE OF BLANCHETTE TRAIL A PUBLIC RIGHT-OF-WAY, AS LOCATED IN SECTION 20, TOWNSHIP 44 SOUTH, RANGE 42 EAST, PALM BEACH COUNTY, FLORIDA.
 2. O DENOTES PERMANENT REFERENCE MONUMENT.
 3. O DENOTES PERMANENT CONTROL POINT.
 4. THIS PLAT CONFORMS TO THE "MINIMUM TECHNICAL STANDARDS FOR LAND SURVEYING IN THE STATE OF FLORIDA", AS ADOPTED BY THE DEPARTMENT OF PROFESSIONAL REGULATION, BOARD OF LAND SURVEYORS (CHAPTER 21HH-6 FLORIDA ADMINISTRATIVE CODE).
 5. THERE MAY BE ADDITIONAL RESTRICTIONS THAT ARE NOT RECORDED ON THIS PLAT THAT MAY BE FOUND IN PUBLIC RECORDS OF PALM BEACH COUNTY.
 6. CURVILINEAR LOT LINES ARE NON-RADIAL UNLESS OTHERWISE NOTED.
 7. D. E. - DENOTES DRAINAGE EASEMENT
 8. U. E. - DENOTES UTILITY EASEMENT
 9. S. E. - DENOTES SIDEWALK EASEMENT

TAL 735, 734

SUBDIVISION CYPRESS WOODS I
BOOK 131
FLOOR MAP # 1704
ZONING RT/S/SE
LSD # 48
ZIP CODE 33467
SUB NAME
DATE

PALM BEACH FARMS COMPANY PLAT NO. 3
(P. B. 2, PGS. 45-54)

CYPRESS WOODS I / 131

CONSUL-TECH ENGINEERING, INC.
CONSULTING ENGINEERS • PLANNERS • LAND SURVEYORS
FOURTH FLOOR
50 EAST SAMPLE ROAD
POMPANO BEACH, FLORIDA 33064

ADD. BY BT
CHECKED BY Juh

0515-001
Pet. 86-98