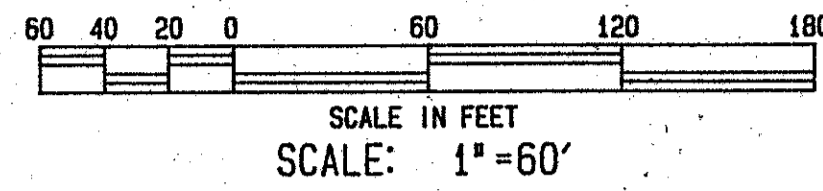


PLAT No. 16 ST. ANDREWS COUNTRY CLUB (A P.U.D.)

BEING A PORTION OF SECTION 34, TOWNSHIP 46 SOUTH,
RANGE 42 EAST, PALM BEACH COUNTY, FLORIDA.
JUNE, 1990

NORTH



EAST R/W LINE AYRSHIRE LANE
PLAT No. 3, ST. ANDREWS COUNTRY CLUB (A P.U.D.)
(P.B. 45, PGS. 149-154)

TRACT "A"
PLAT NO. 2 ST. ANDREWS COUNTRY CLUB
(A P.U.D.)
P.B. 43, PG. 170-178

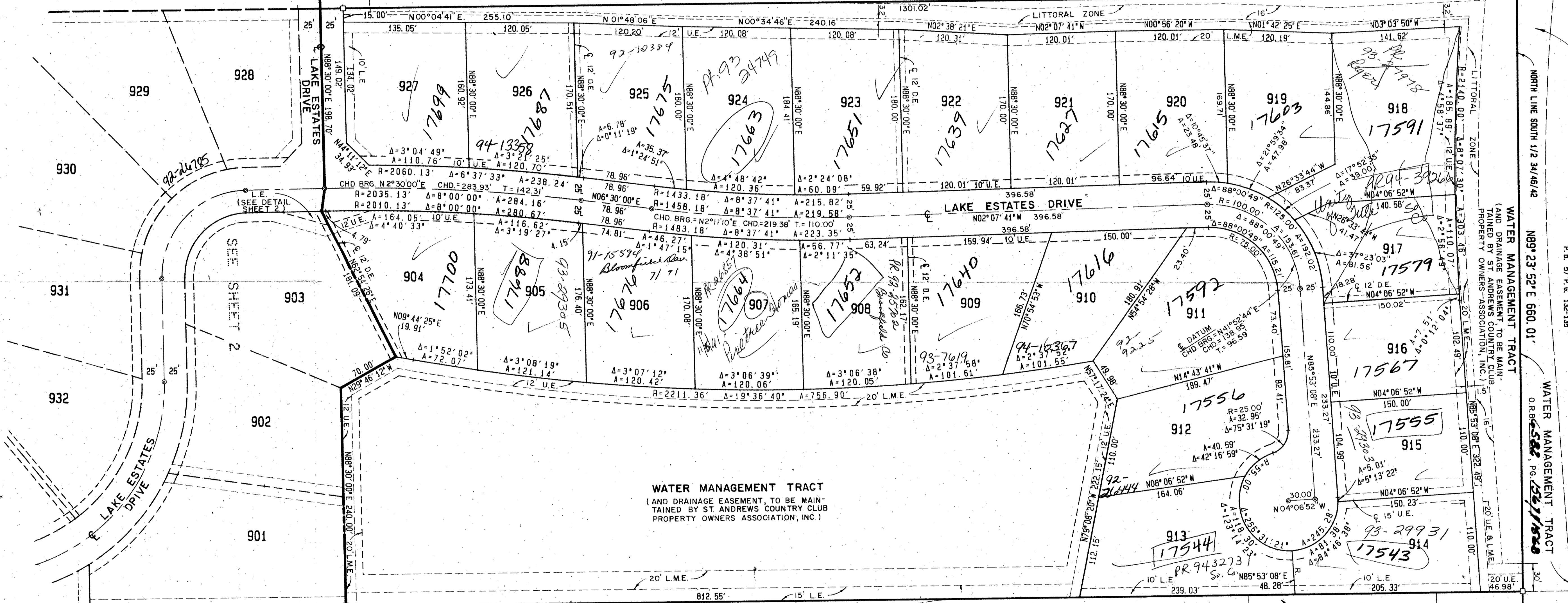
WATER MANAGEMENT TRACT
O.R.B. 6582, PG. 1571-1572

WATER MANAGEMENT TRACT
O.R.B. 6582, PG. 1571-1574

N00°50'30"W 2690.28' O.A.

WEST LINE SECTION 34

P.B.C. BRASS DISK
N.W. CORNER, S.W. 1/4 SECT. 34,
TOWNSHIP 46, RANGE 42



TRACT "L"
ST. ANDREWS COUNTRY CLUB PLAT No. 14
(A P.U.D.)
P.B. 57, P.G. 132-135

WATER MANAGEMENT TRACT
(AND DRAINAGE EASEMENT TO BE MAINTAINED BY ST. ANDREWS COUNTRY CLUB PROPERTY OWNERS ASSOCIATION, INC.)

WATER MANAGEMENT TRACT
(AND DRAINAGE EASEMENT TO BE MAINTAINED BY ST. ANDREWS COUNTRY CLUB PROPERTY OWNERS ASSOCIATION, INC.)

WATER MANAGEMENT TRACT
O.R.B. 6582, PG. 1571-1574

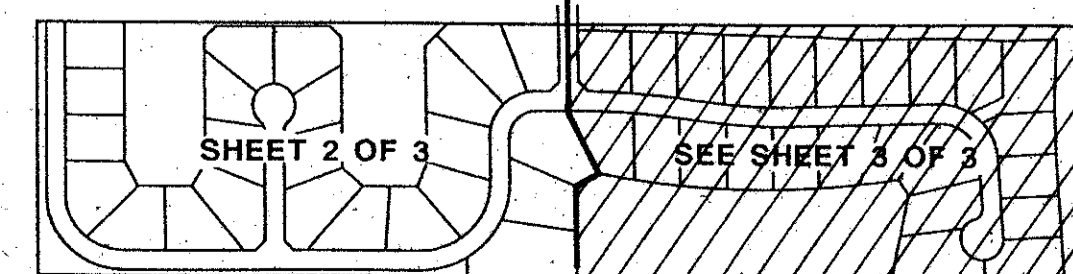
N00°50'30"W 2689.49' O.A.

BONIELLO'S ACRES P.U.D.
(P.B. 33, PGS. 166-167)

BONIELLO'S ACRES P.U.D. PHASE TWO
(P.B. 37, PGS. 71-72)

0305-013
Pet. 80-73

SUBDIVISION - LAKE ESTATES
BOOK 66
PAGE 158
FLOOD MAP #215A
ZONING, RE
OF 00-13
PUD NAME ST. ANDREWS C.C. PLAT 16



KEY MAP
SCALE: 1" = 500'

THIS SHEET

60/158

PLAT OF
LAKE ESTATES
PLAT No. 16
ST. ANDREWS COUNTRY CLUB

WALLACE SURVEYING CORPORATION
9176 ALTERNATE A1A, LAKE PARK, FLORIDA 33403 • 407/942-4233

FIELD	J.P.	JOB NO.	90-1085	F.B.	PG.
OFFICE	M.B. & R.C.	DATE	JUNE, 1990	DWG NO.	90-1085
C/K'D	F.G.	REF		SHEET	3 OF 3