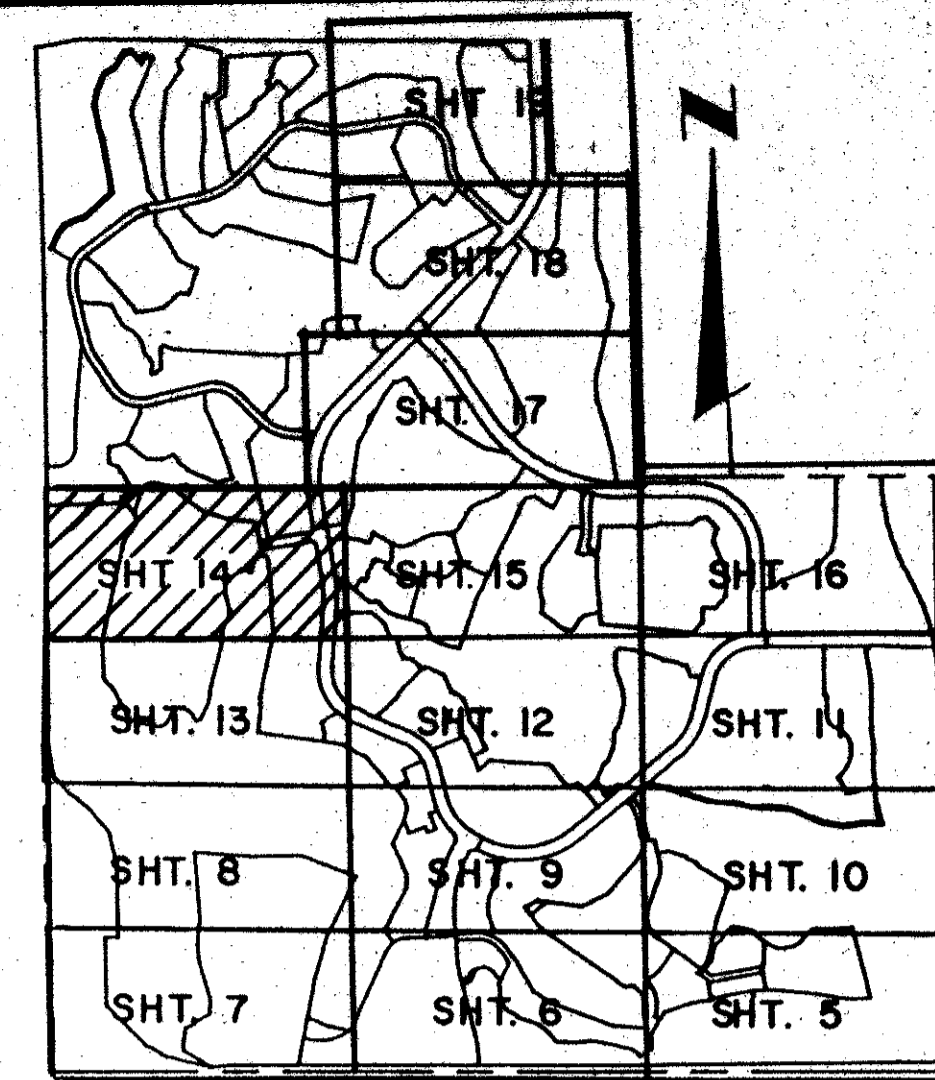
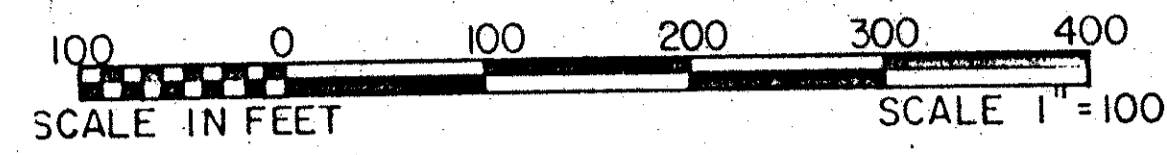


BOCA WEST P.U.D. MASTER PLAT 2

IN SECTIONS 9, 15 AND 16, TOWNSHIP 47 SOUTH, RANGE 42 EAST
 PALM BEACH COUNTY, FLORIDA
 IN 19 SHEETS - SHEET NO. 14

GEE & JENSON
 ENGINEERS - ARCHITECTS - PLANNERS, INC.
 WEST PALM BEACH, FLORIDA
 FEBRUARY 1989



KEY MAP

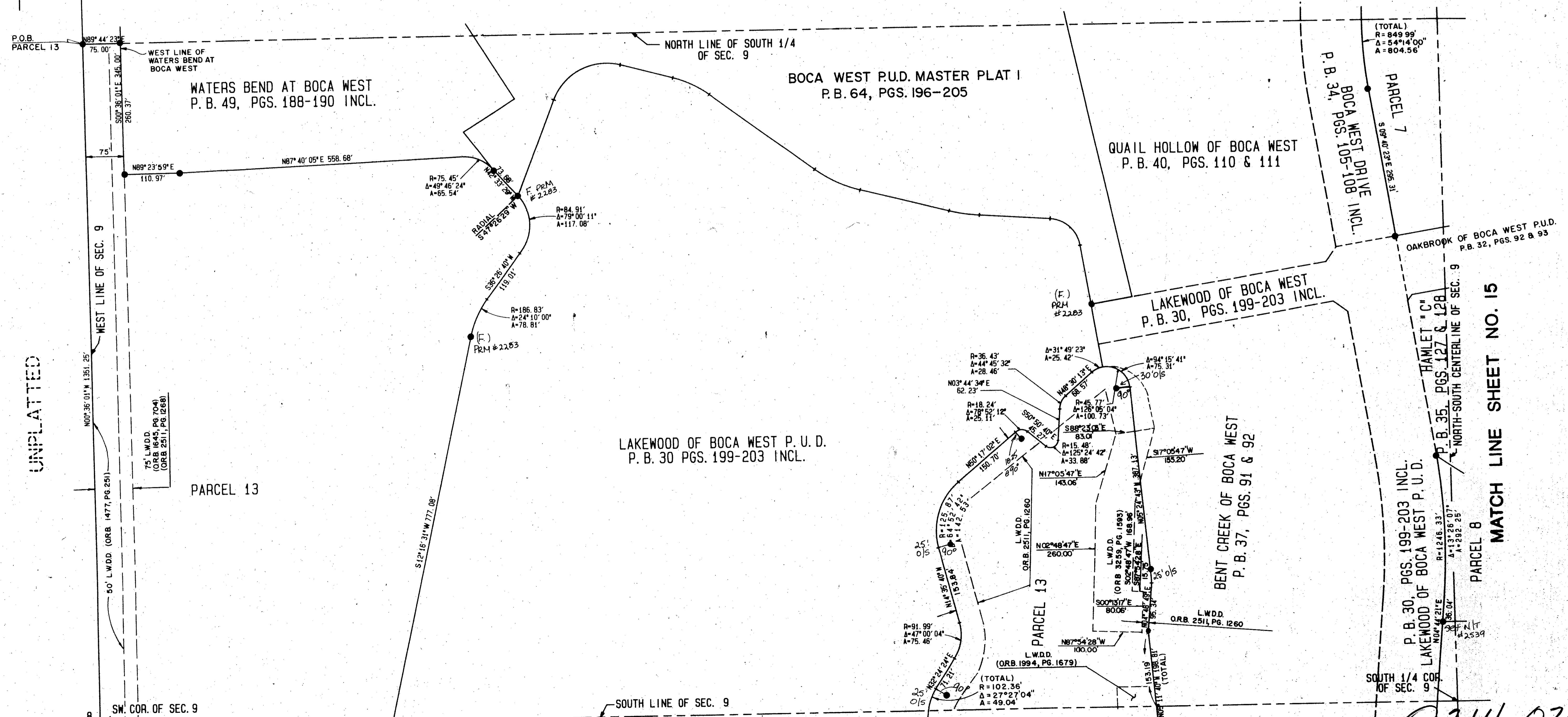
0214-026

172

STATE OF FLORIDA
 COUNTY OF PALM BEACH
 This plat was filed for
 record at _____ M. this _____ day
 of _____ 1990, and duly
 recorded in Plat Book No. _____
 on Pages _____ thru _____.

JOHN B. DUNKLE
 Clerk Circuit Court

By: _____ D.C.



UNPLATTED

MATCH LINE SHEET NO. 13

MATCH LINE SHEET NO. 15

TAZ 607

SUBDIVISION # BOCA WEST MASTER PLAT 2
 BOOK 66 PAGE 172
 FLOOD ZONE B FLOOD MAP # 2208
 CUAO # 53 ZONING AP. 2208
 SF 85-7 ZIP CODE 33474
 9/17/92 Same

COMPUTED *WLD*
 DRAWN *DLB*
 CHECKED *JLD*
 COMMENTS
 APPROVED *WLD*
 REVISION

MATCH LINE SHEET NO. 13

BOCA WEST PUD MASTER PLAT 2 66/172

0214-026
 Plat-85-7