

# MONTERRA

PART OF PINE RIDGE AT DELRAY BEACH NORTH P.U.D.

BEING A REPLAT OF HIDDEN LAKES PHASE NO. 1, (P.B. 41, PGS. 41-42) AND  
A PORTION OF BLOCK 9, PALM BEACH FARMS COMPANY PLAT NO. 1 (P.B. 2, PGS. 26-28)  
SITUATE IN SECTION 9, TOWNSHIP 46 SOUTH, RANGE 42 EAST  
PALM BEACH COUNTY, FLORIDA

AUGUST, 1990

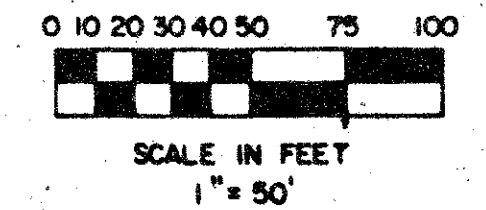
SHEET 2 OF 5

# 191

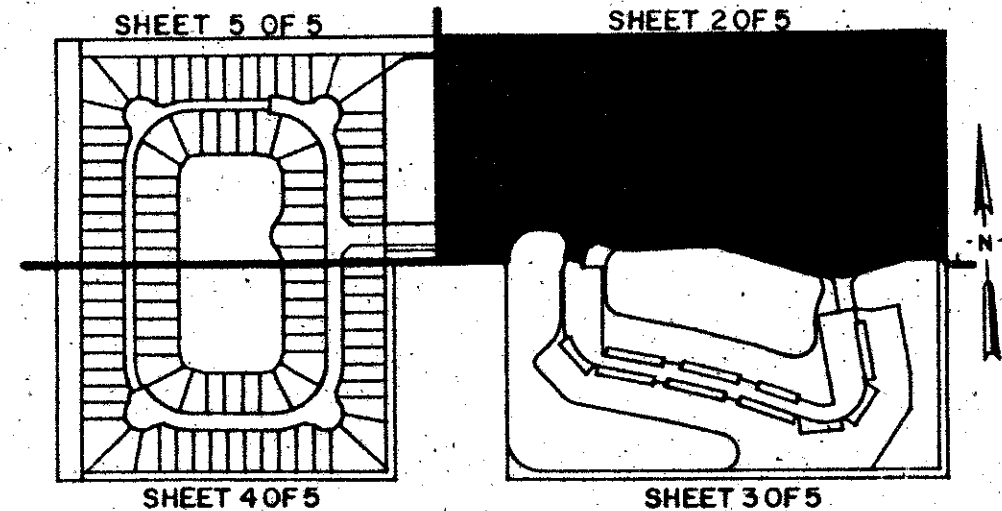
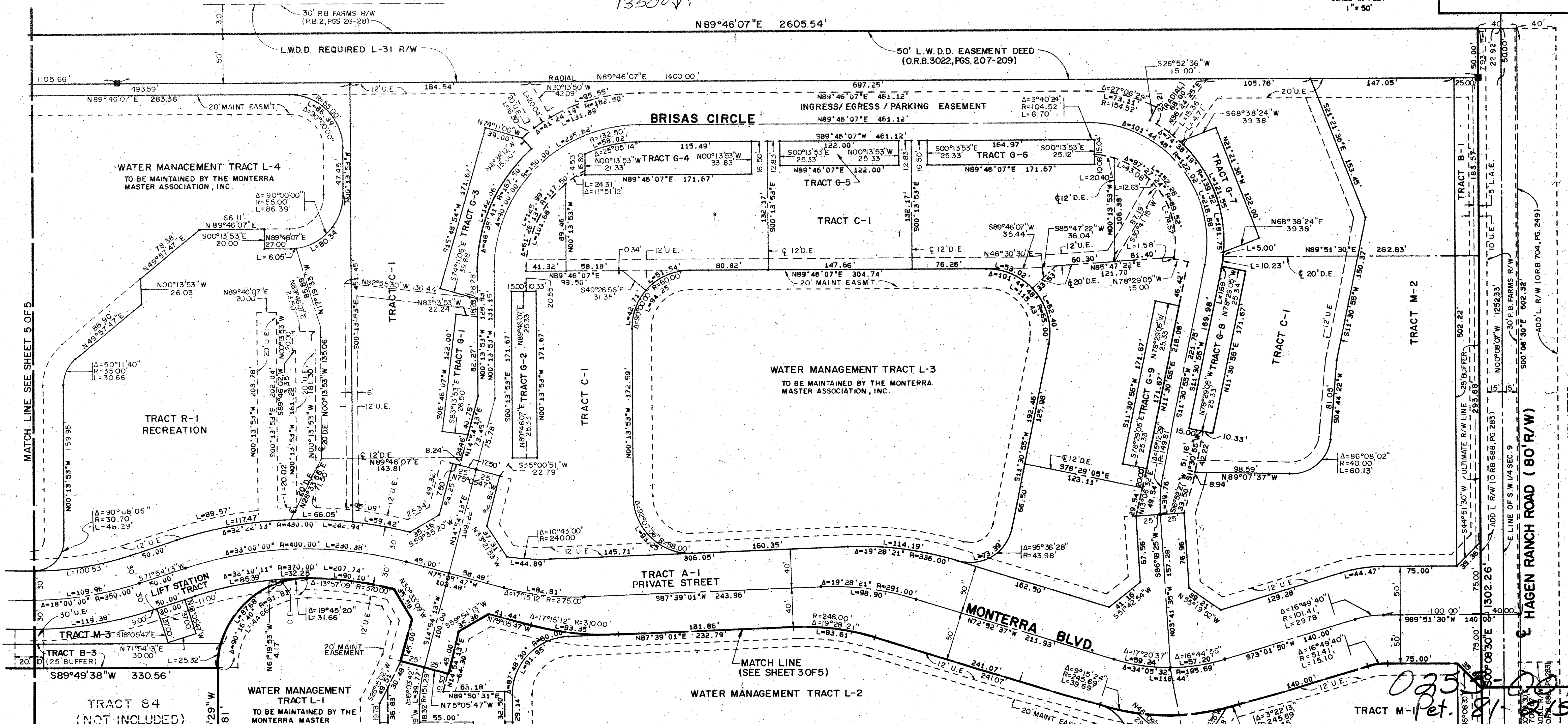
STATE OF FLORIDA  
COUNTY OF PALM BEACH

THIS PLAT WAS FILED FOR  
RECORD \_\_\_\_\_ DAY OF \_\_\_\_\_  
AD, 1990 AND DULY RECORDED  
IN PLAT BOOK \_\_\_\_\_ ON PAGES  
THROUGH \_\_\_\_\_

JOHN B. DUNKLE, CLERK  
BY: \_\_\_\_\_, D.C.



13500



66/191

SUBDIVISION \* MONTERRA  
BOOK 66 PAGE 191  
FLOOD MAP # 200A  
FLOOD ZONE B  
ZONING RS  
QUAD # 51  
SI 21-215  
ZIP CODE 33446  
CITY NAME PINE RIDGE @ DELRAY BEACH  
9/16/92

**PETSCHÉ & ASSOCIATES, INC.**  
Professional Engineers • Land Surveyors • Development Consultants  
1760 N. Congress Ave., Suite 203, W. Palm Beach, FL 33409  
(407) 640-3800

**MONTERRA**

DESIGNED	CHECKED	DATE	SCALE	JOB NO.	SHEET OF
M.E.H.	R.A.H.	OCT. 1989	1" = 50'	89-042	2 5