

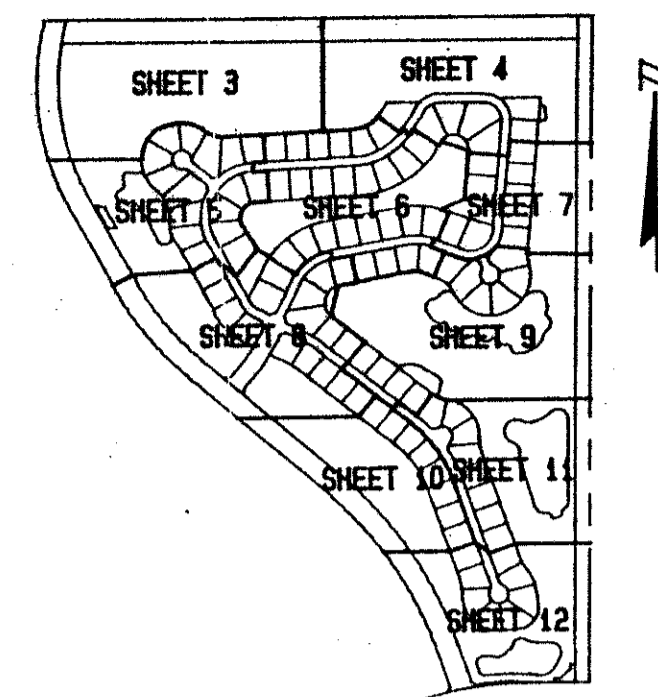
# BINK'S FOREST OF THE LANDINGS AT WELLINGTON P. U. D. PLAT 1

IN PARTS OF SECTIONS 6 AND 7, TOWNSHIP 44 SOUTH, RANGE 41 EAST

PALM BEACH COUNTY, FLORIDA

IN TWELVE SHEETS

SHEET No. 3



KEY MAP  
N.T.S.

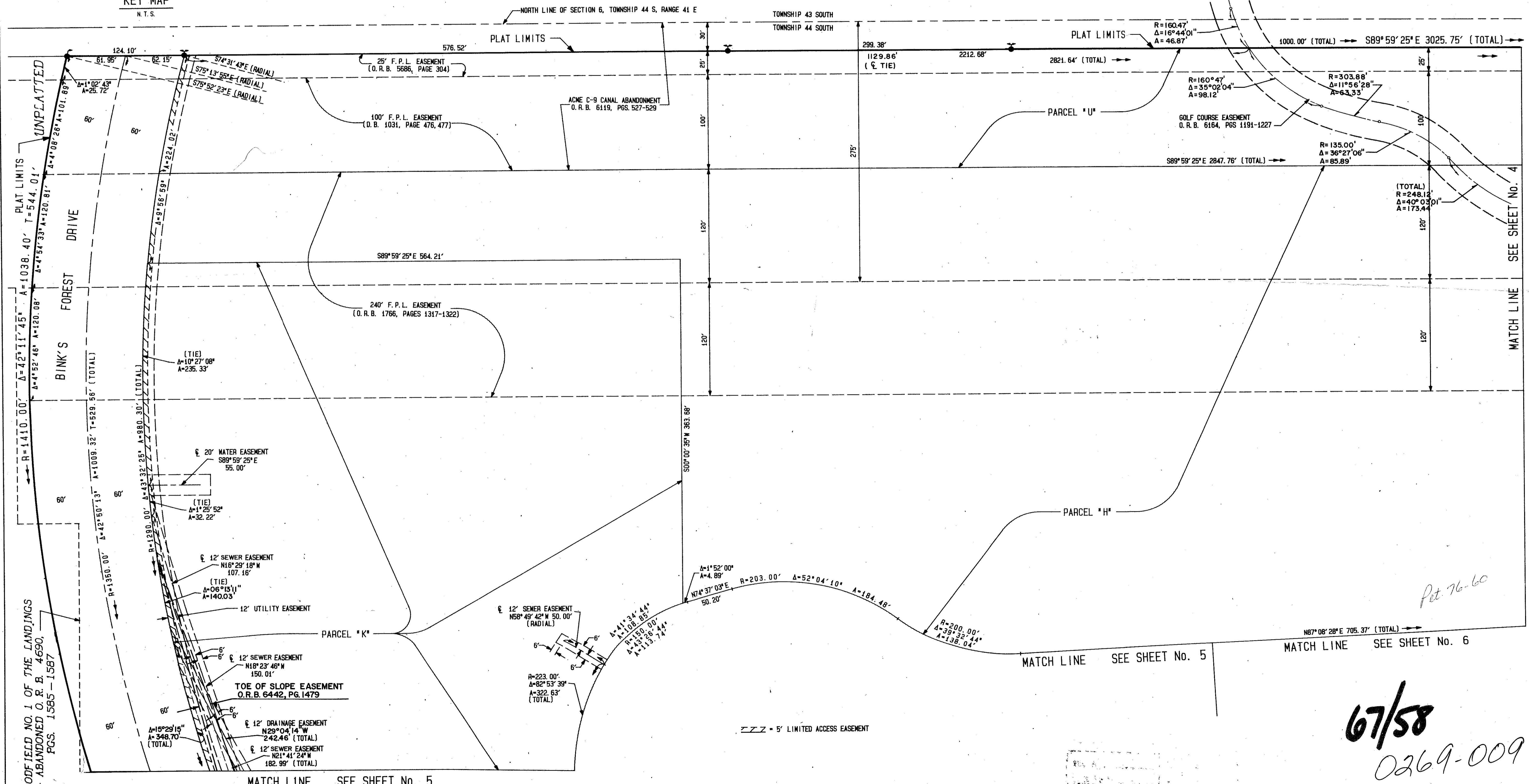
GEE AND JENSON  
ENGINEERS - ARCHITECTS - PLANNERS, INC.  
APRIL 1989  
SCALE IN FEET SCALE 1"=50'



STATE OF FLORIDA  
COUNTY OF PALM BEACH  
This plat was filed for  
record at \_\_\_\_\_ M. this \_\_\_\_\_ day  
of \_\_\_\_\_ 1990, and duly  
recorded in Plat Book No. \_\_\_\_\_  
on Pages \_\_\_\_\_ and \_\_\_\_\_  
JOHN B. DUNKLE  
Clerk Circuit Court  
By: \_\_\_\_\_ D.C.

UNPLATTED

UNPLATTED



BINK'S FOREST OF THE  
LANDINGS  
SUBDIVISION # LANDINGS  
BOOK 67 PAGE 58  
FLOOD MAP # 100B  
ZONING RE  
QUAD # 77  
SE 76-7D  
ZIP CODE 33414  
PUD NAME WELLINGTON PUD PLAT 1

COMPUTED D. M. LEI/CADD  
DRAWN D. M. LEI/CADD  
CHECKED M. J. J.  
APPROVED \_\_\_\_\_

67/58  
0269-009

**BINK'S FOREST OF THE LANDINGS AT WELLINGTON P.U.D. PLAT 1**

WATER MANAGEMENT TRACTS ARE THE PERPETUAL MAINTENANCE OBLIGATION OF FOURTH WELLINGTON, INC.