

# PALM ISLES, A P.U.D.

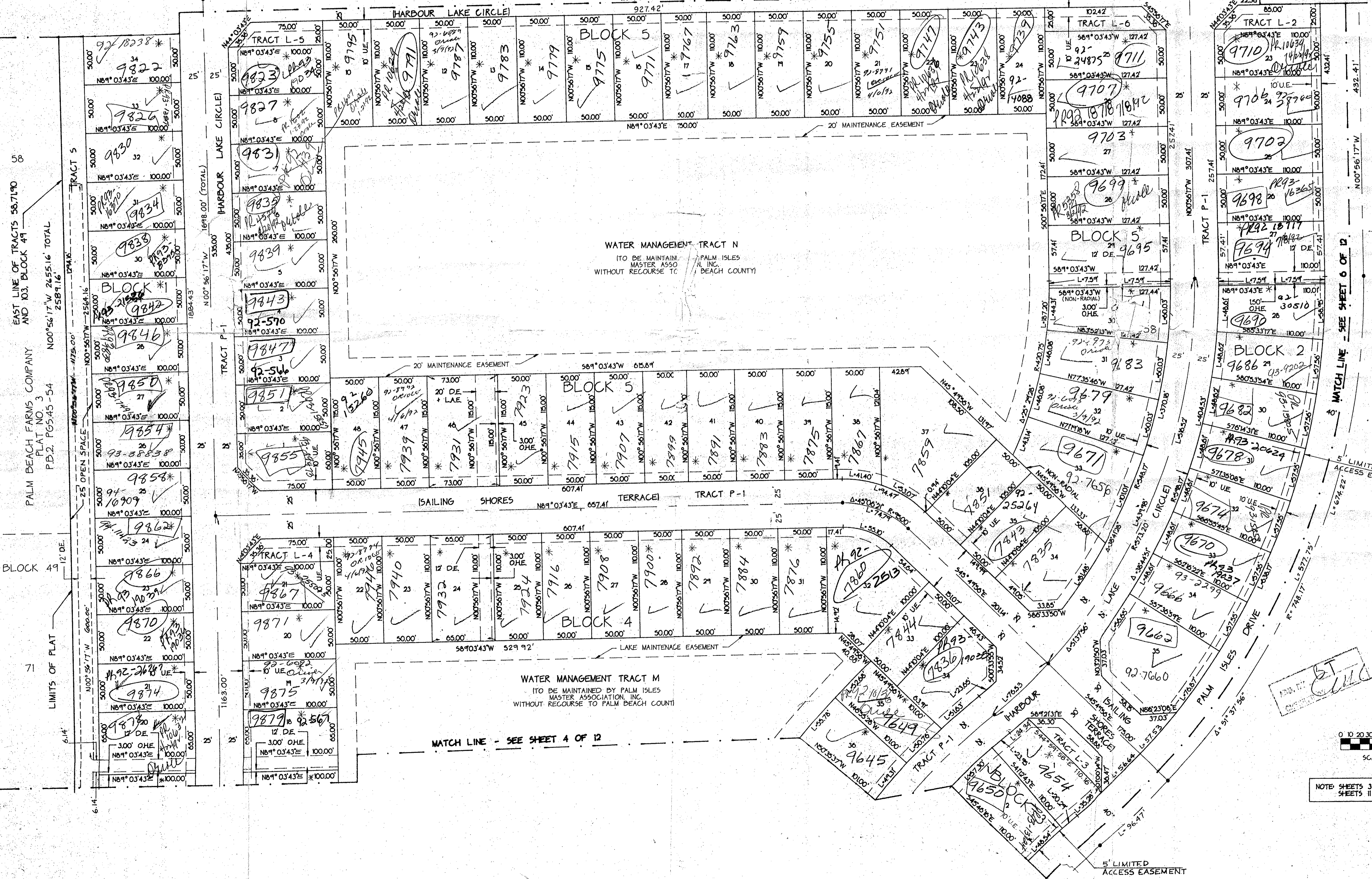
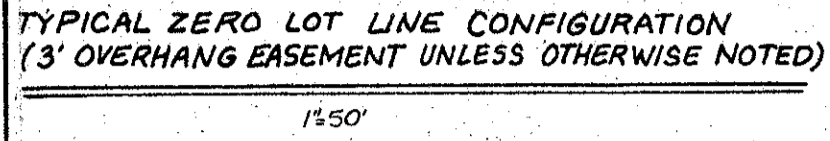
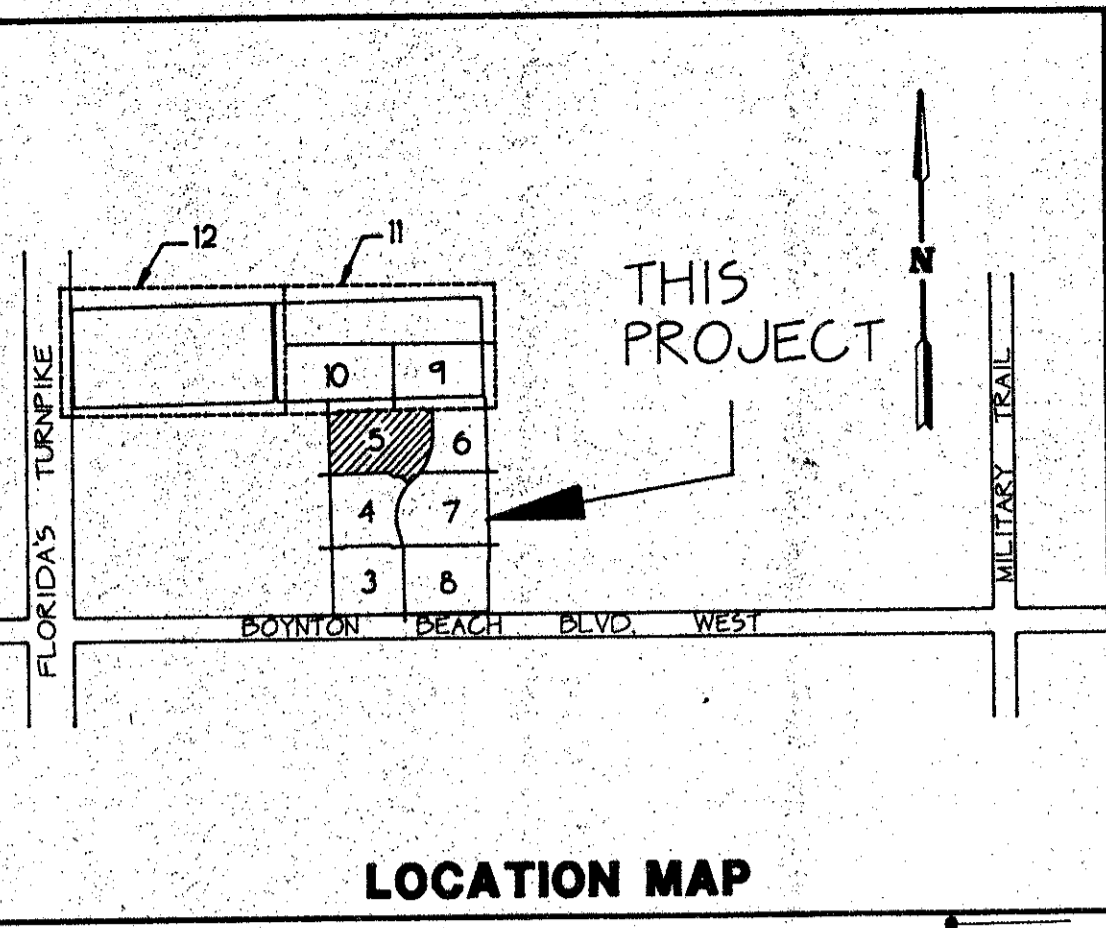
571-CC1

A REPLAT OF A PORTION OF BLOCK 49 OF PALM BEACH FARMS COMPANY PLAT NO. 3 AS RECORDED IN PLAT BOOK 2, PAGES 45 THROUGH 54 INCLUSIVE OF THE PUBLIC RECORDS OF PALM BEACH COUNTY, FLORIDA IN SECTION 21, TOWNSHIP 45 SOUTH, RANGE 42 EAST, PALM BEACH COUNTY, FLORIDA

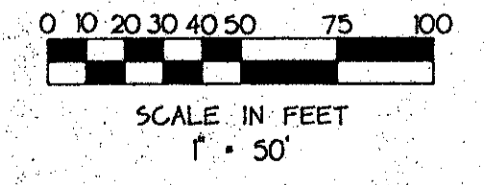
THIS INSTRUMENT PREPARED BY JAMES E. PARK, P.L.S. WILLIAMS, HATFIELD & STONER, INC. - ENGINEERS PLANNERS SURVEYORS 1325 SOUTH CONGRESS AVENUE, SUITE 118, BOYNTON BEACH, FLORIDA 33426

SHEET 5 OF 12

LOCATION MAP



PALM ISLES  
PAGE 120  
FLUDD MAP # 185A  
ZONING K5  
RE 87-92  
ZIP CODE 33457  
SCALE



NOTE: SHEETS 3 THROUGH 10, AT 1" = 50'  
SHEETS 11 AND 12 AT 1" = 100'

DUPLICATE