

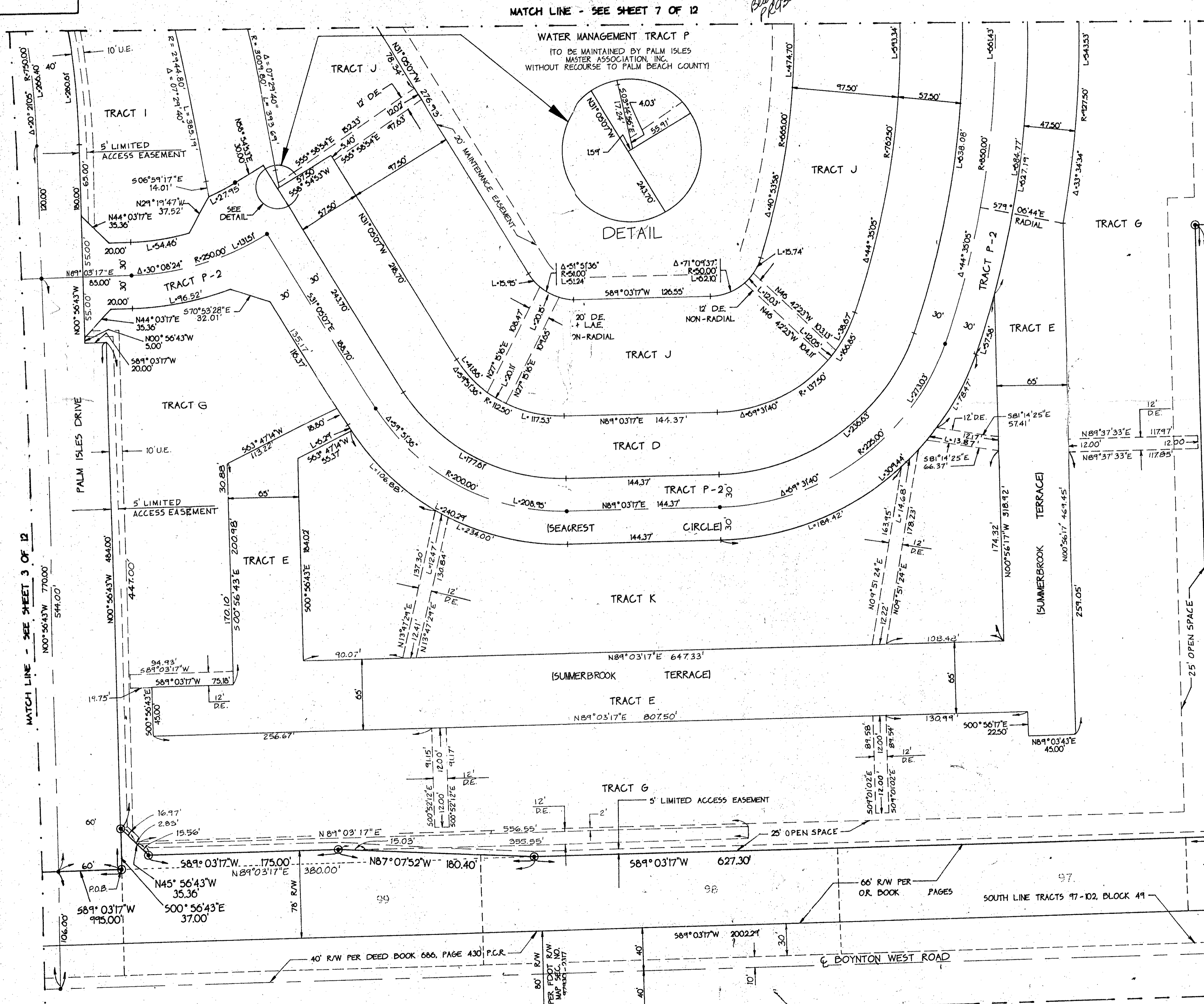
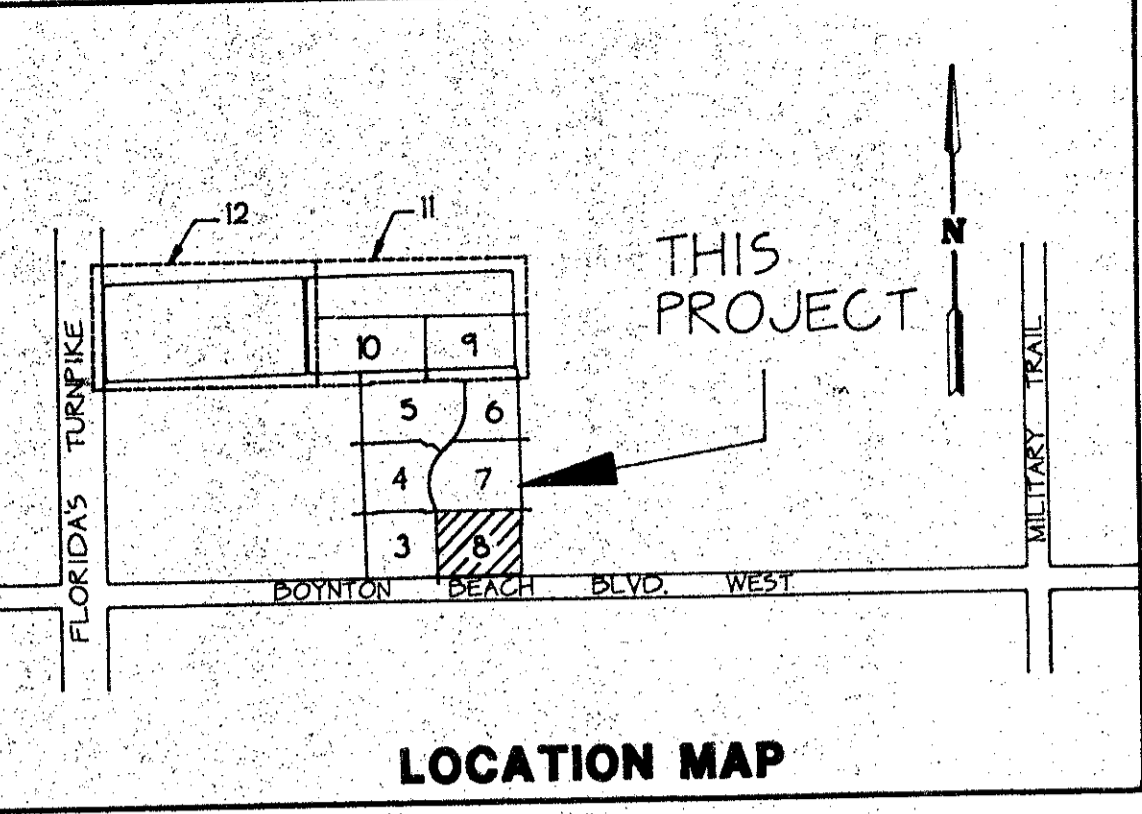
PALM ISLES, A P.U.D.

571-501

A REPLAT OF A PORTION OF BLOCK 49 OF PALM BEACH FARMS COMPANY PLAT NO. 3 AS RECORDED IN PLAT BOOK 2, PAGES 45 THROUGH 54 INCLUSIVE OF THE PUBLIC RECORDS OF PALM BEACH COUNTY, FLORIDA IN SECTION 21, TOWNSHIP 45 SOUTH, RANGE 42 EAST, PALM BEACH COUNTY, FLORIDA

THIS INSTRUMENT PREPARED BY JAMES E. PARK, P.L.S. WILLIAMS, HATFIELD & STONER, INC. - ENGINEERS PLANNERS SURVEYORS 1325 SOUTH CONGRESS AVENUE, SUITE 118, BOYNTON BEACH, FLORIDA 33426

SHEET 8 OF 12



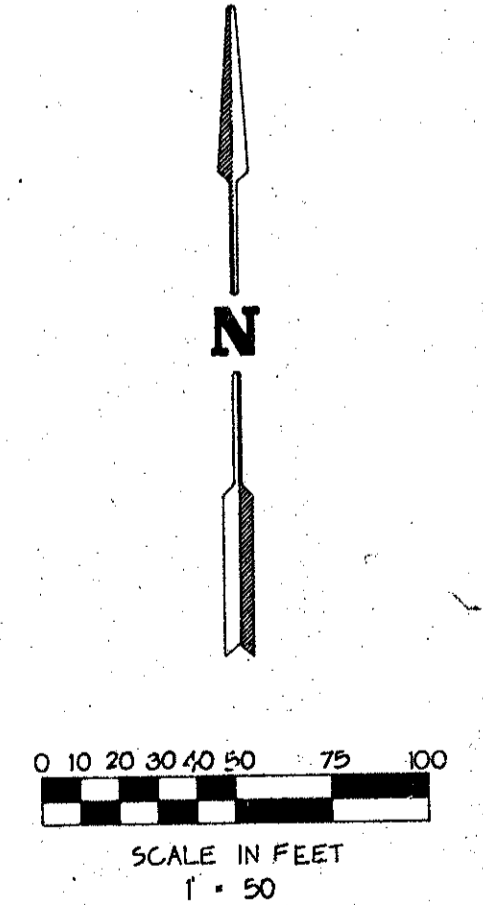
204 STRATHMORE ESTATES AT BOYNTON BEACH PLAT 1 P.B.49, PGS.26-27

205

PALM BEACH FARMS COMPANY PLAT NO. 3 P.B.2, PGS.45-54

BLOCK 48

56



NOTE: SHEETS 3 THROUGH 10 AT 1" = 50' SHEETS 11 AND 12 AT 1" = 100'

REVISION TO PALM ISLES
BOOK 17 PAGE 123
FLOOD ZONE B FLOOD MAP # RSA
ZONING # 50
S.E. 87-412
P.O. BOX 33457
2/23/17

TAL 443

DUPLICATE