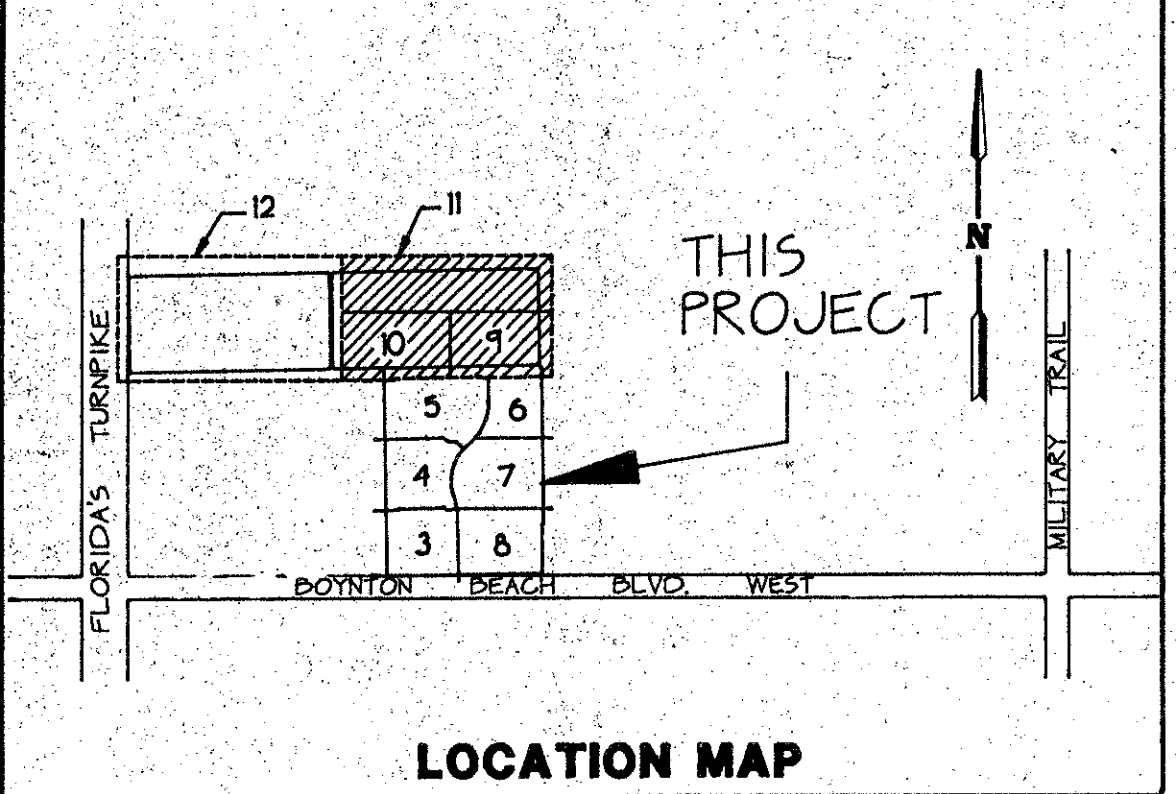


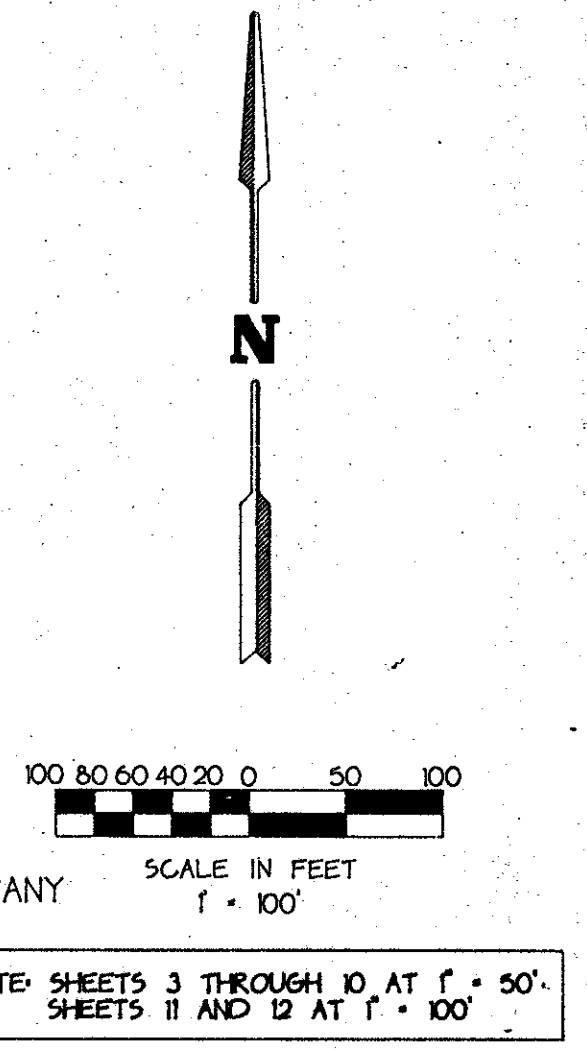
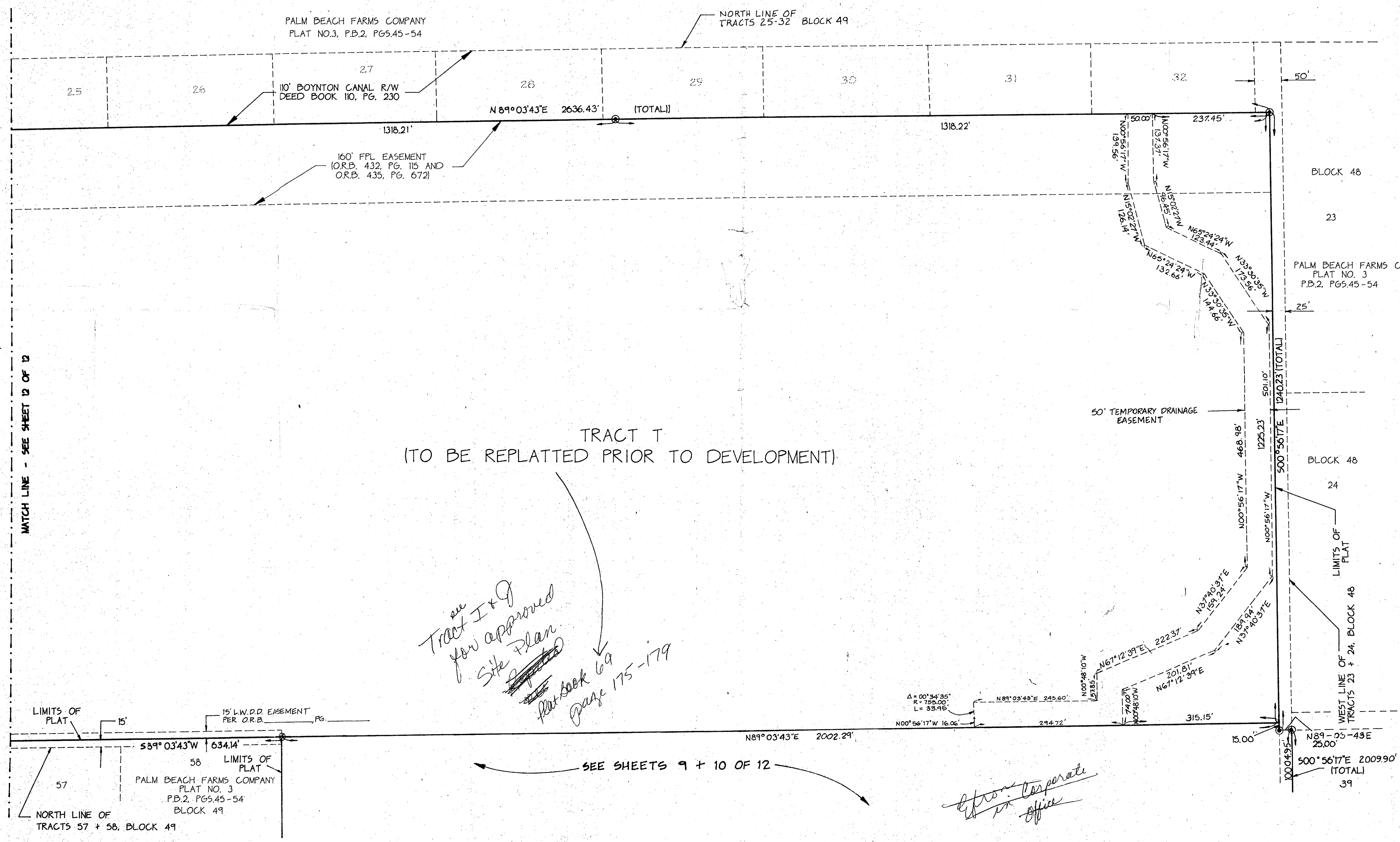
PALM ISLES, A P.U.D. 571-001

A REPLAT OF A PORTION OF BLOCK 49 OF PALM BEACH FARMS COMPANY PLAT NO. 3 AS RECORDED IN PLAT BOOK 2, PAGES 45 THROUGH 54 INCLUSIVE OF THE PUBLIC RECORDS OF PALM BEACH COUNTY, FLORIDA IN SECTION 21, TOWNSHIP 45 SOUTH, RANGE 42 EAST, PALM BEACH COUNTY, FLORIDA

THIS INSTRUMENT PREPARED BY JAMES E. PARK, P.L.S. WILLIAMS, HATFIELD & STONER, INC. - ENGINEERS PLANNERS SURVEYORS 1325 SOUTH CONGRESS AVENUE, SUITE 118, BOYNTON BEACH, FLORIDA 33426



SHEET 11 OF 12



SUBDIVISION - PALM ISLES
 BOOK 67 PAGE 126
 FLOOD MAP 185A
 ZONING R5
 RE 87-92
 PUD NAME SOUND
 214512
 TAZ 1443

see Tract I & J for approved Site Plan per book 69 page 175-179

*James E. Park
in office*