

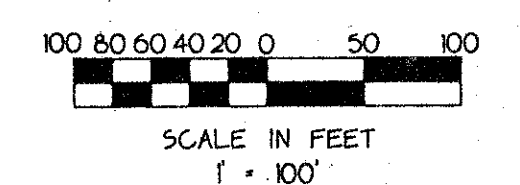
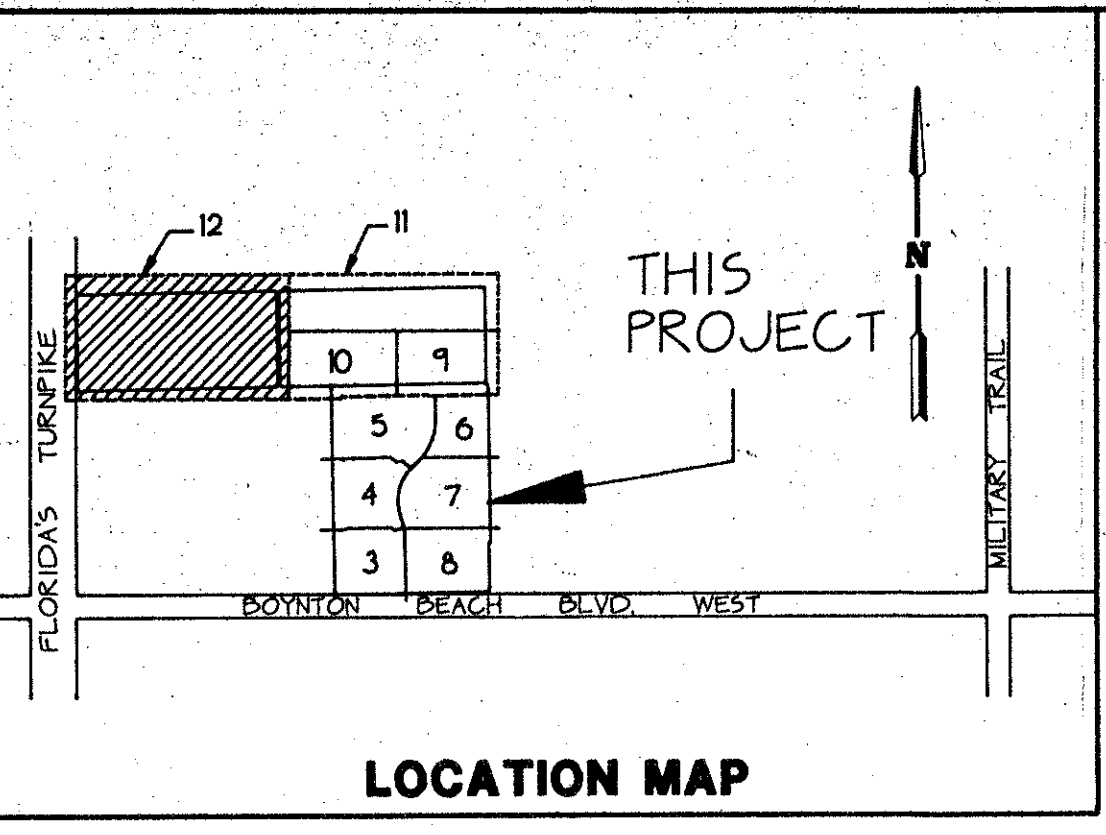
PALM ISLES, A P.U.D.

571-001

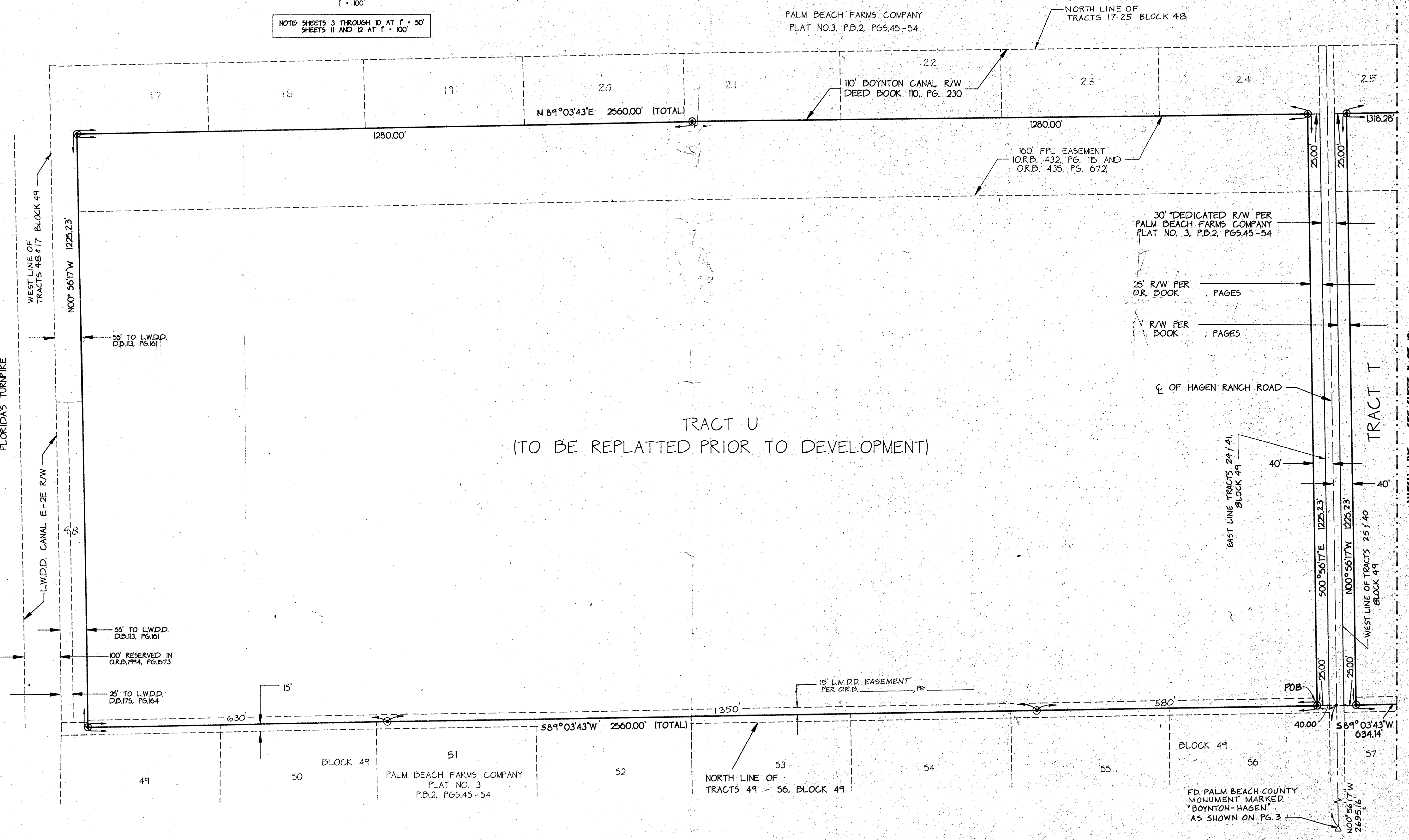
A REPLAT OF A PORTION OF BLOCK 49 OF PALM BEACH FARMS COMPANY PLAT NO. 3 AS RECORDED IN PLAT BOOK 2, PAGES 45 THROUGH 54 INCLUSIVE OF THE PUBLIC RECORDS OF PALM BEACH COUNTY, FLORIDA IN SECTION 21, TOWNSHIP 45 SOUTH, RANGE 42 EAST, PALM BEACH COUNTY, FLORIDA

THIS INSTRUMENT PREPARED BY JAMES E. PARK, P.L.S. WILLIAMS, HATFIELD & STONER, INC. - ENGINEERS PLANNERS SURVEYORS 1325 SOUTH CONGRESS AVENUE, SUITE 118, BOYNTON BEACH, FLORIDA 33426

SHEET 12 OF 12



NOTE: SHEETS 3 THROUGH 10, AT 1" = 50' SHEETS 11 AND 12 AT 1" = 100'



TRACT U
(TO BE REPLATTED PRIOR TO DEVELOPMENT)

MATCH LINE - SEE SHEET 11 OF 12

PALM ISLES
 SHEET 127
 PLAT NO. 3
 RECORDED IN
 PLAT BOOK 2, PAGES 45-54
 8/1-9/2
 2/15/10
 TAM 4413

FD. PALM BEACH COUNTY
 MONUMENT MARKED
 BOYNTON-HAGEN
 AS SHOWN ON PG. 3

Duplicate