

Pine Glen At Abbey Park Plat No. 1

A Part Of Abbey Park, A Planned Unit Development,
Lying In Section 11, Township 44 South, Range 42 East, Palm Beach County, Florida

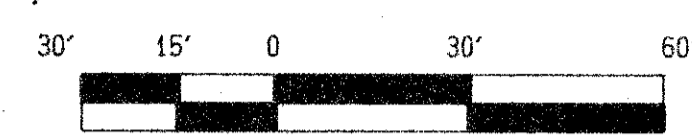
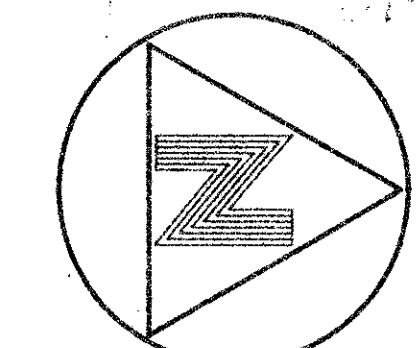
ABBEY PARK PLAT NO. 5
(PLAT BOOK 65, PAGES 89 AND 90)

POINT OF COMMENCEMENT
SOUTHEAST CORNER
ABBEY PARK PLAT NO. 5
(PLAT BOOK 65, PAGES 89 AND 90)

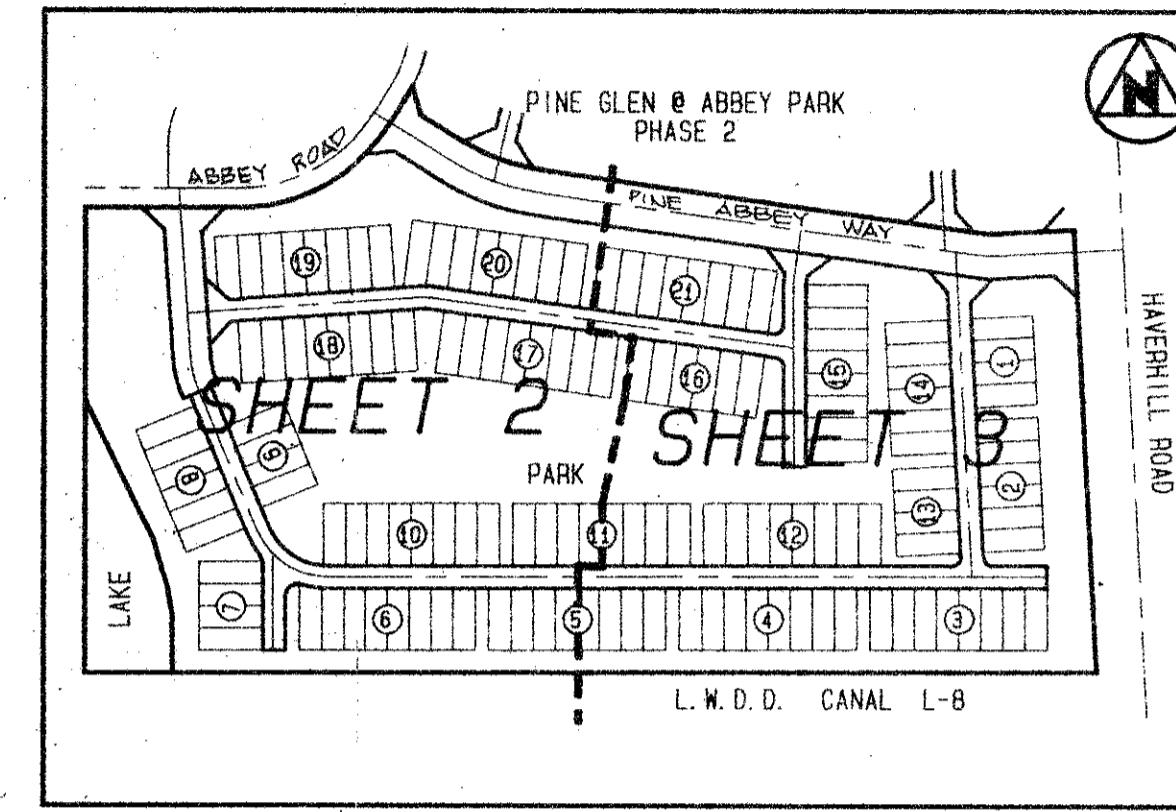
POINT OF BEGINNING

N00°00'00"E 522.24'

NORTHWEST CORNER
ABBEY PARK PLAT NO. 5
(PLAT BOOK 65, PAGES 89 AND 90)

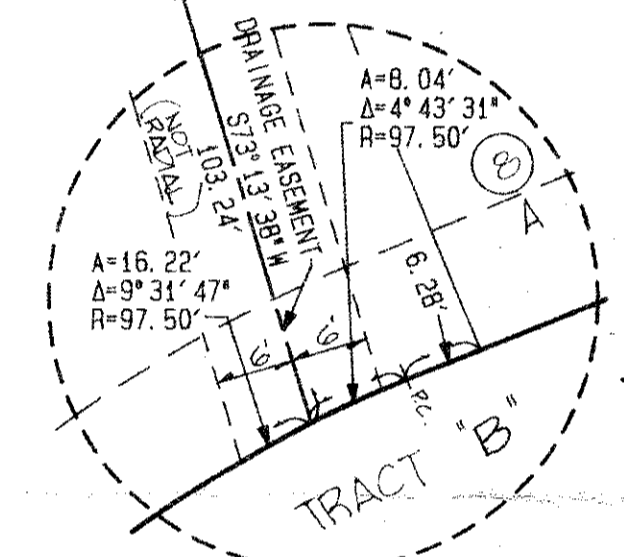


GRAPHIC SCALE
IN FEET



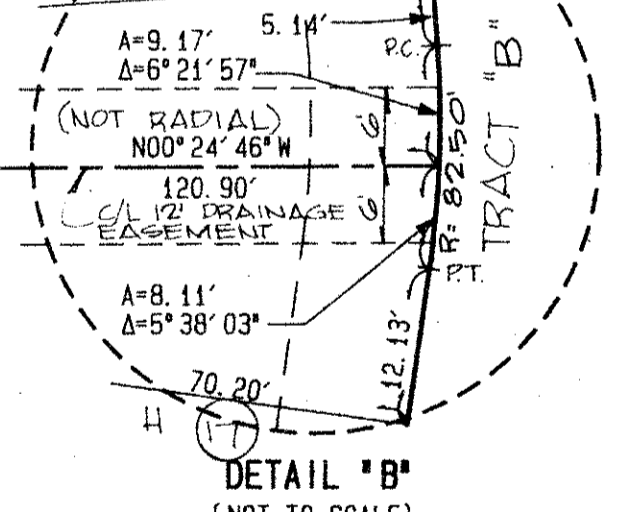
KEY MAP
(N.T.S.)

ABBEY PARK PLAT NO. 3
(PLAT BOOK 46, PAGES 180 AND 181)



DETAIL "A"
(NOT TO SCALE)

0190-007
Pct. 79-161



DETAIL "B"
(NOT TO SCALE)

- SURVEYOR'S NOTES AND LEGEND:
1. END LOT AREAS ARE 1768 SQUARE FEET (TYPICAL) U.O.N. INTERIOR LOT AREAS ARE 1732 SQUARE FEET (TYPICAL) U.O.N.
 2. BEARINGS SHOWN OR STATED HEREON, ARE BASED ON, OR ARE RELATIVE TO THE BEARING OF NORTH 89°53'27" EAST ALONG THE SOUTH LINE OF SECTION 11 TOWNSHIP 44 SOUTH, RANGE 42 EAST, STATE PLANE GRID AZIMUTHS, FLORIDA EAST ZONE, AS PUBLISHED BY PALM BEACH COUNTY ENGINEERING DEPARTMENT IN THOSE INSTANCES WHERE UTILITY/DRAINAGE STRUCTURES ARE CONSTRUCTED IN CONFLICT WITH THE PLATTED PERMANENT CONTROL POINTS (P.C.P.) POSITION, STRADDLERS MONUMENTED AS PERMANENT CONTROL POINTS WILL BE SET TO REFERENCE THE PLATTED P.C.P. POSITION.
 3. LINES WHICH INTERSECT CURVES ARE RADIAL, UNLESS OTHERWISE NOTED
 4. 50' FT. DENOTES SQUARE FEET
 5. C/L DENOTES A CENTERLINE
 6. (N.R.) DENOTES A NON-RADIAL LINE
 7. □ DENOTES A SET #2424 PERMANENT REFERENCE MONUMENT (P.R.M.)
 8. ○ DENOTES A SET #2424 PERMANENT CONTROL POINT (P.C.P.)
 9. ○ DENOTES A SET #2424 PERMANENT CONTROL POINT (P.C.P.)
 10. U.O.N. DENOTES "UNLESS OTHERWISE NOTED"

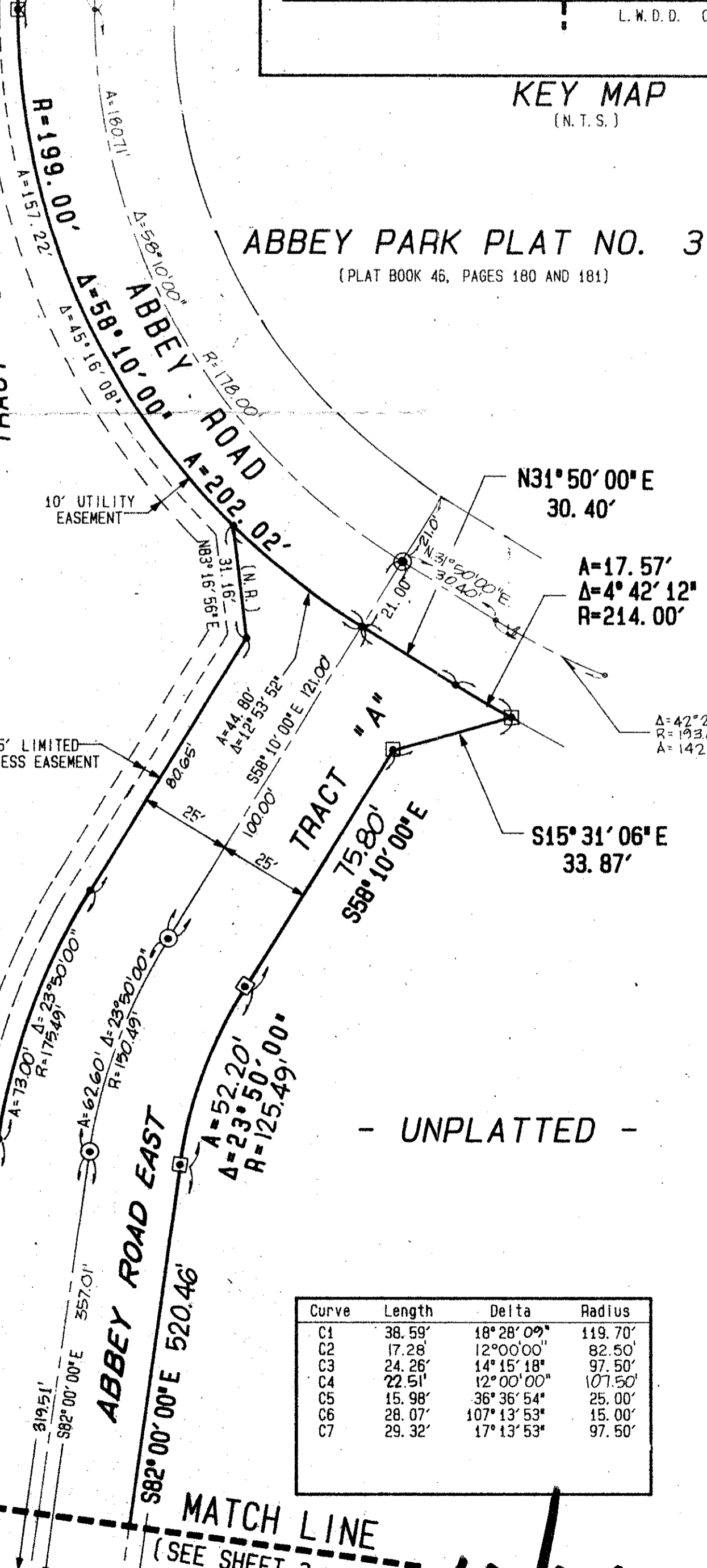
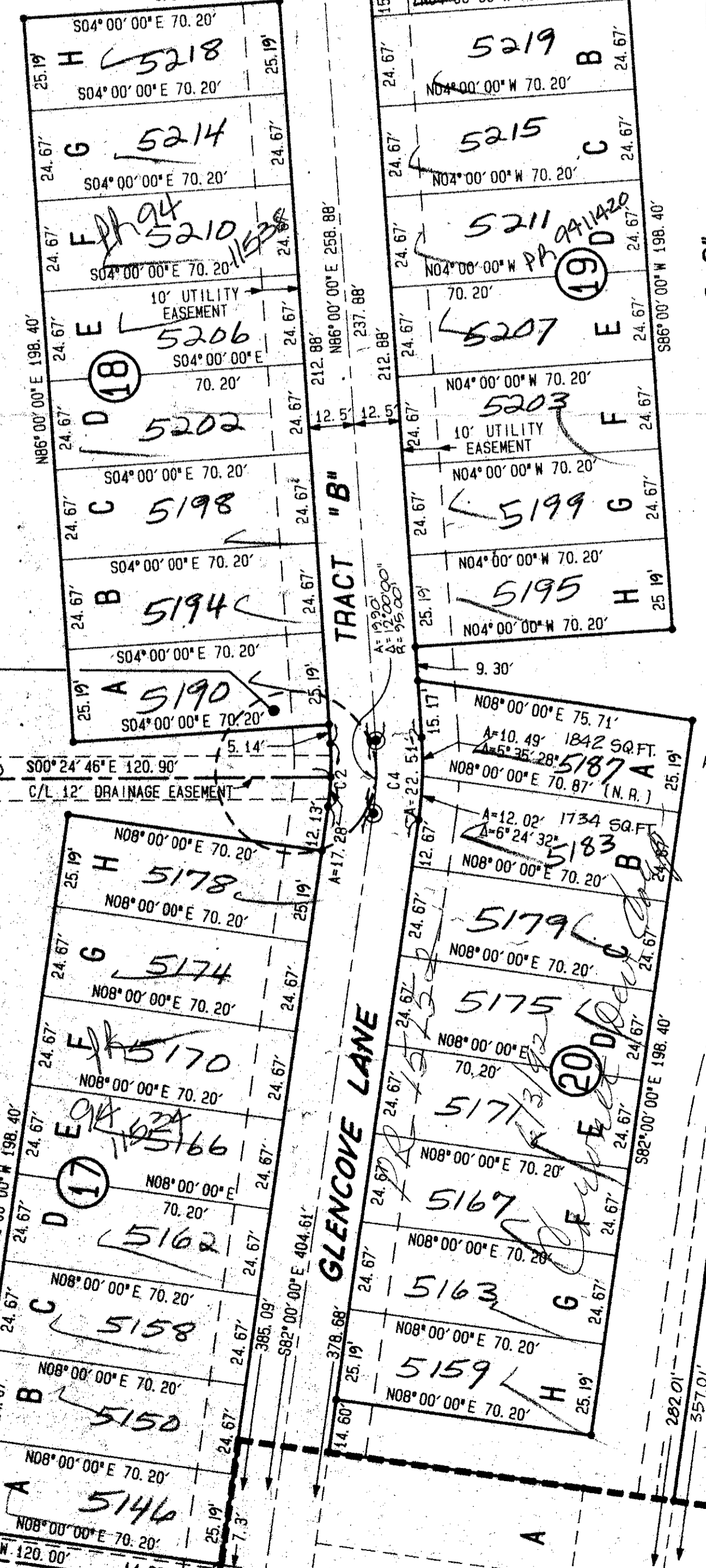
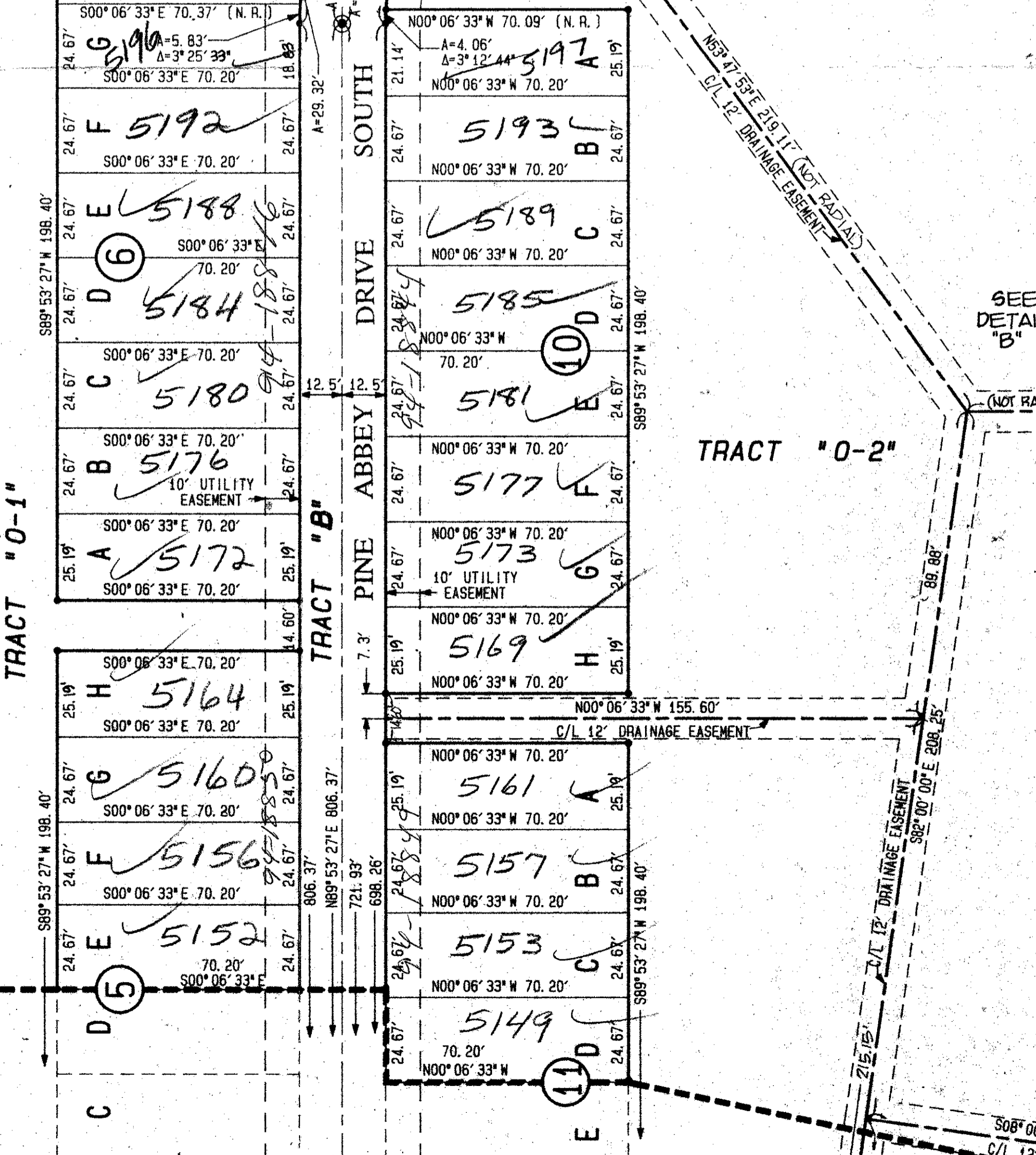
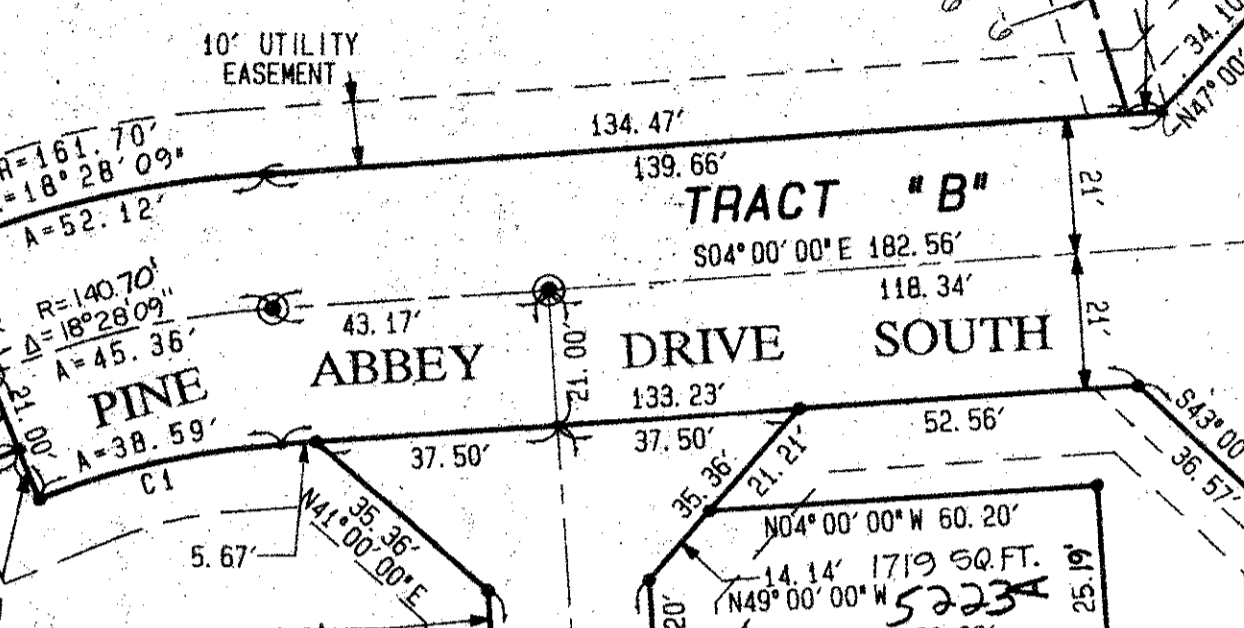
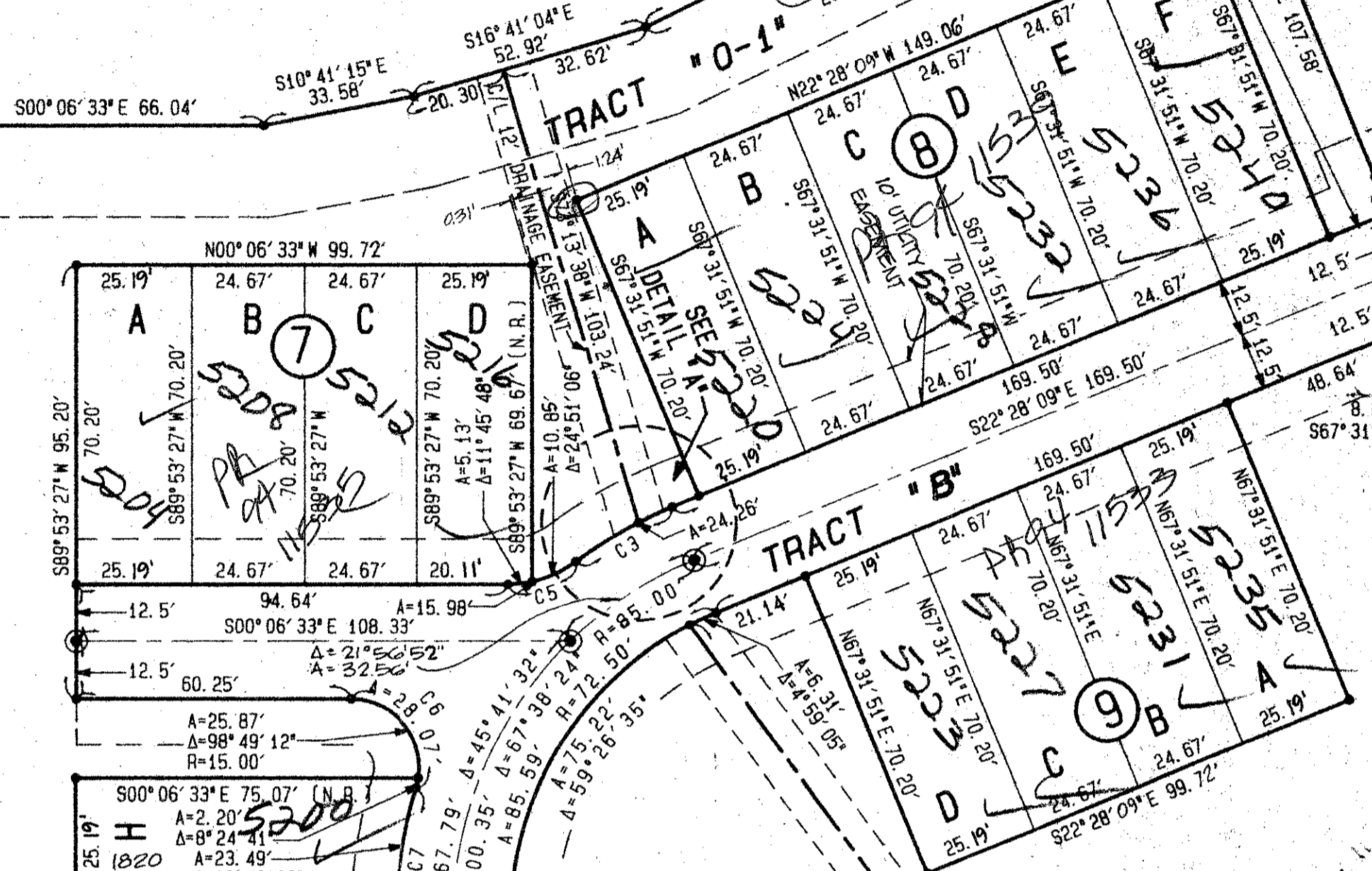
THIS INSTRUMENT WAS PREPARED BY WILLIAM R. VAN CAMPEN, R.L.S., IN AND FOR THE OFFICES OF BENCH MARK LAND SURVEYING & MAPPING, INC., 4152 WEST BLUE HERON BOULEVARD, SUITE 121, RIVIERA BEACH, FLORIDA

BENCH MARK
LAND SURVEYING & MAPPING, INC.
RIVIERA BEACH, FLORIDA (407) 848-2102
WEST PALM BEACH, FLORIDA (407) 793-9234

Record Plat
Pine Glen At Abbey Park Plat No. 1

TRACT "L"
TO BE MAINTAINED BY ABBEY PARK HOMEOWNERS ASSOCIATION, INC. WITHOUT RECOURSE TO PALM BEACH COUNTY, FLORIDA

TRACT "R"



Curve	Length	Delta	Radius
C1	38.59'	18°28'09"	119.70'
C2	17.28'	12°00'00"	82.50'
C3	24.38'	14°15'18"	97.50'
C4	22.55'	12°00'00"	107.50'
C5	15.98'	36°36'54"	25.00'
C6	28.07'	107°13'53"	15.00'
C7	29.32'	17°13'53"	97.50'

MATCH LINE
(SEE SHEET 3 OF 3)

67/186

L. W. D. D. CANAL L-8

SOUTH LINE SECTION 11, TOWNSHIP 44 SOUTH, RANGE 42 EAST

OFFICIAL RECORDS BOOK 6621, PAGE 1077

OFFICIAL RECORDS BOOK 1732, PAGE 612

TAL 289

BOOK 67
PAGE 136
FLOOR MAP # 165B
ZONING RM
CDAD # 32
SE 14-161
ZIP CODE 33415
PUB NAME ABBEY PARK