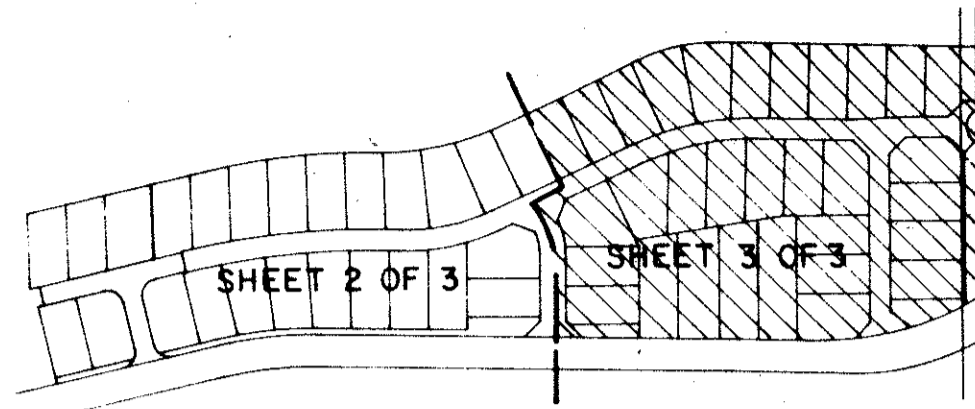


GLADES LANDING PLAT FOUR A PLANNED UNIT DEVELOPMENT

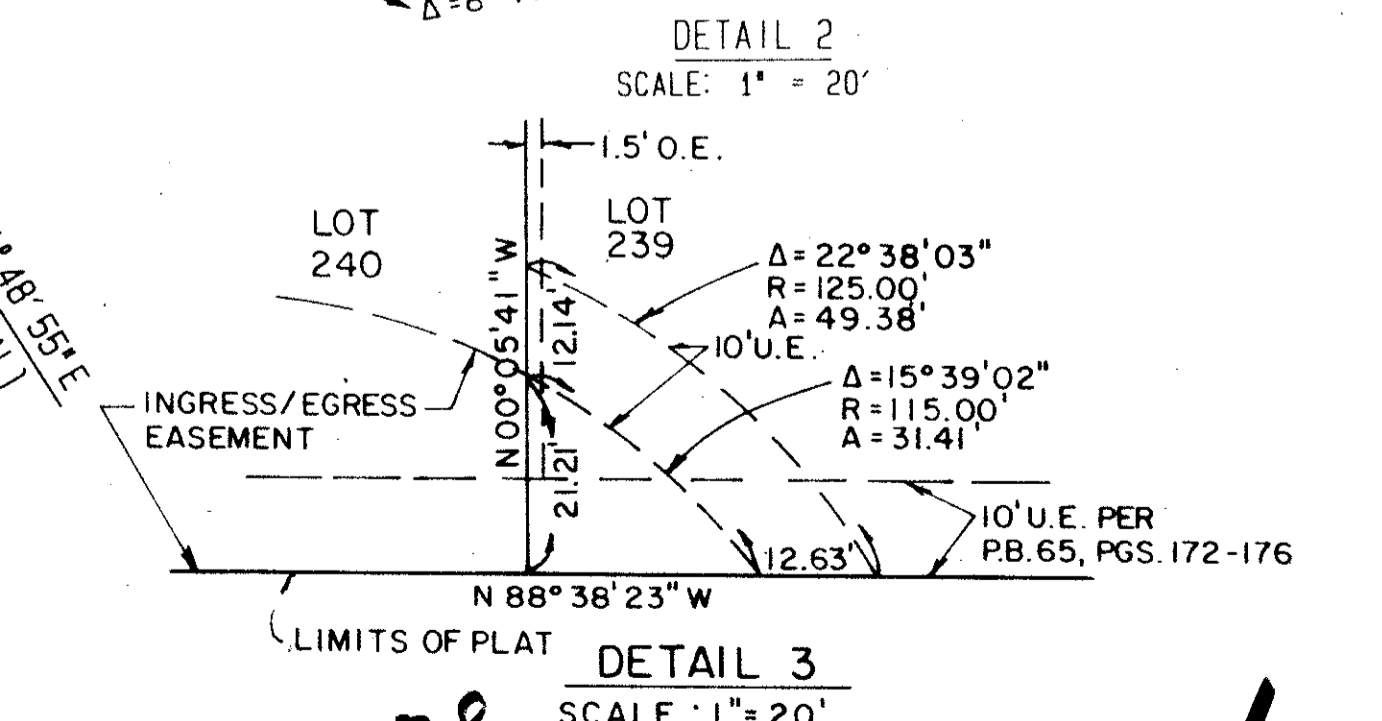
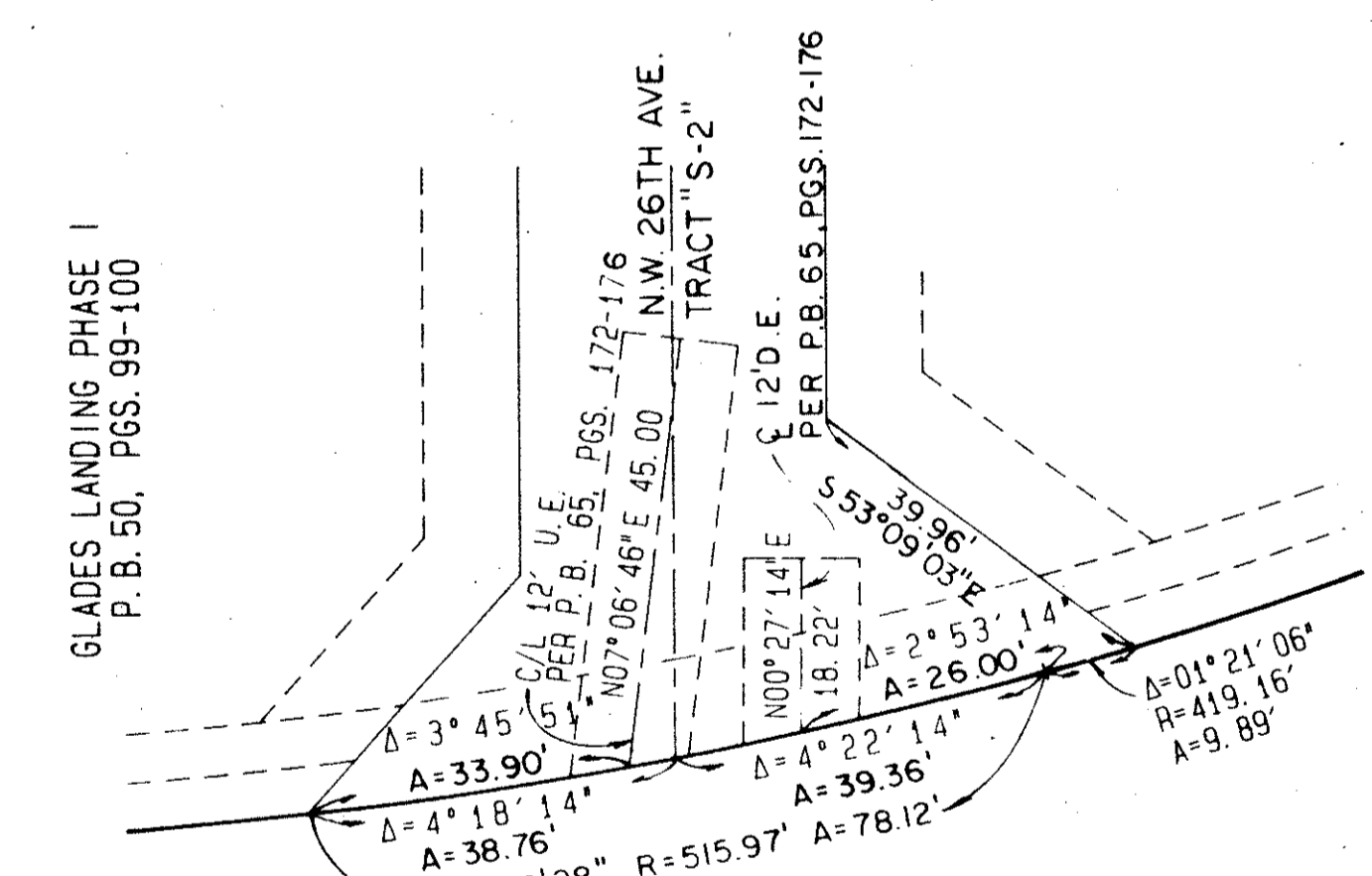
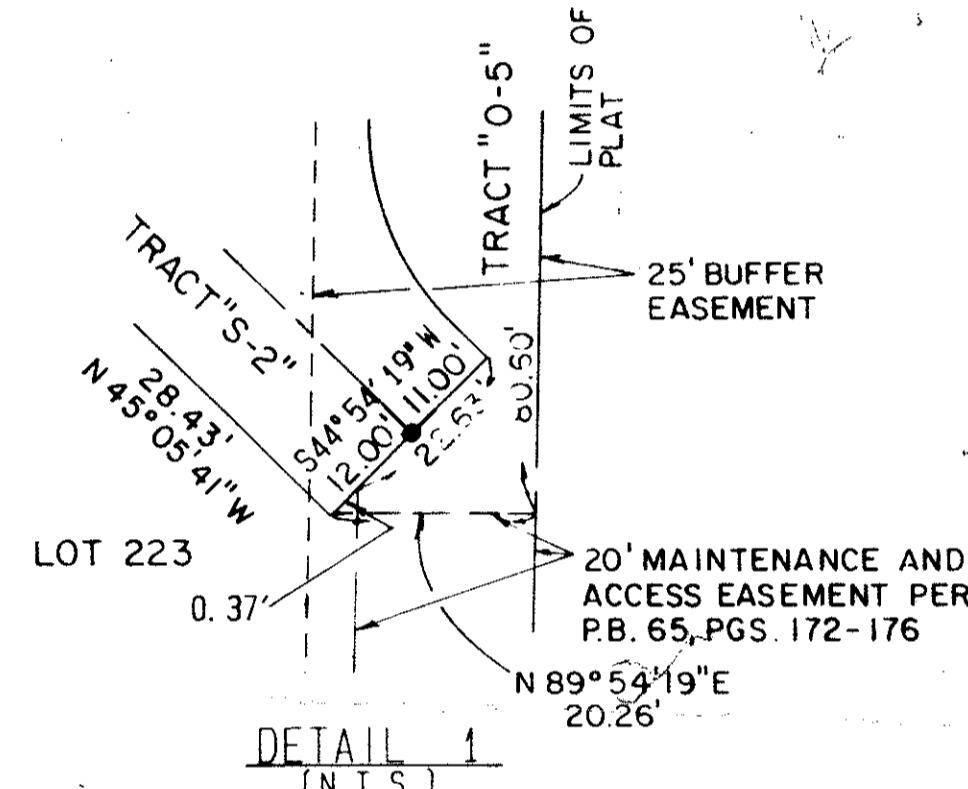
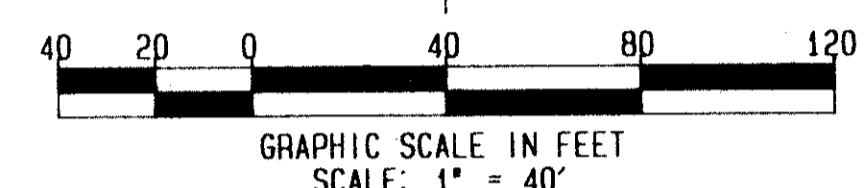
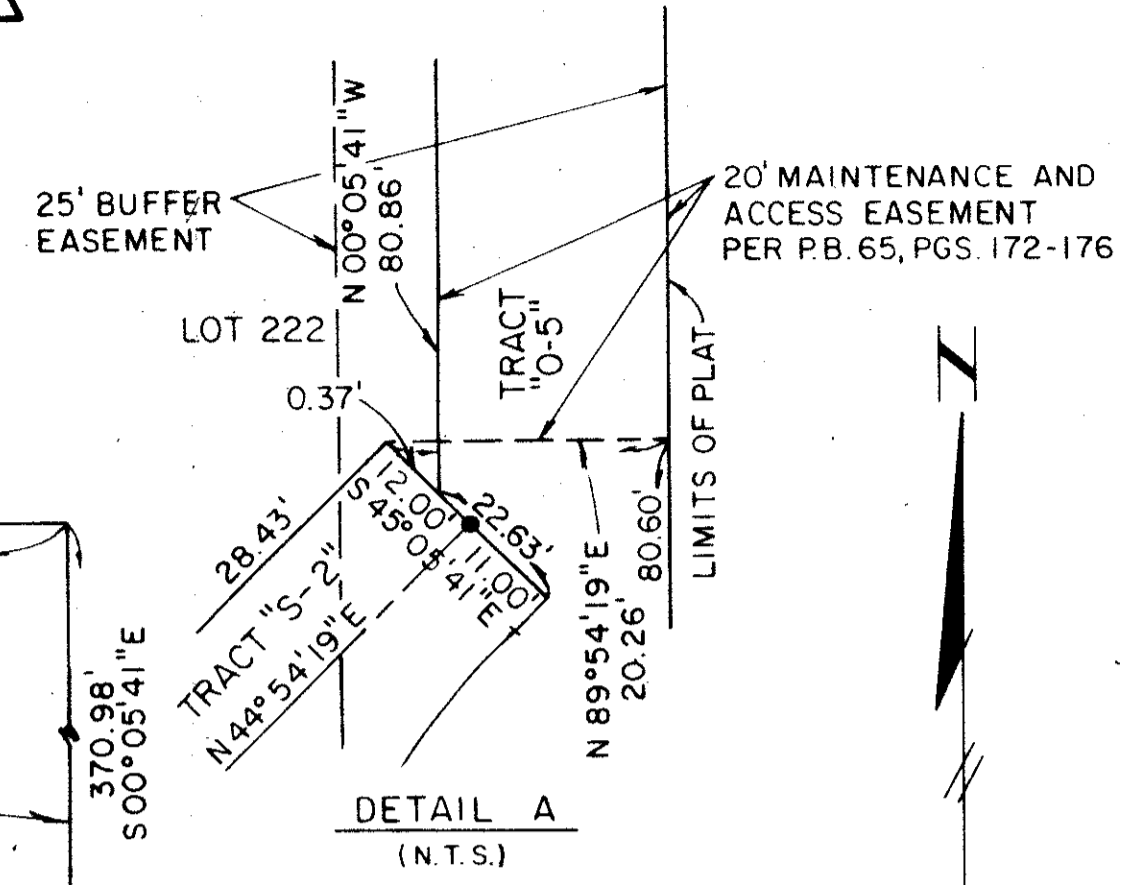
BEING A REPLAT OF TRACT "A-1" AND TRACT "B-3" OF GLADES LANDING PLAT TWO AS RECORDED IN PLAT BOOK 65, PAGES 172 - 176 OF THE PUBLIC RECORDS OF PALM BEACH COUNTY, FLORIDA, LYING IN SECTION 15, TOWNSHIP 47 SOUTH, RANGE 42 EAST FEBRUARY, 1991

SHEET 3 OF 3



SHEET INDEX
SCALE 1" = 300'

NOTE:
ADDITIONAL EASEMENTS FROM TRACT "A-1" OF PLAT BOOK 65 PAGES 3 AND 5 NOT SHOWN ON THIS PLAT HAVE BEEN ABANDONED PER OFFICIAL RECORDS BOOK 65 PGS. 172-176 PUBLIC RECORDS OF PALM BEACH COUNTY, FLORIDA.



DETAIL "B" (N.T.S.)

PET. 84-38
0434-004 68/3

METRIC ENGINEERING INC.
ENGINEERS - PLANNERS - SURVEYORS
MIAMI - FORT LAUDERDALE
WEST PALM BEACH - PANAMA CITY

PLAT FOUR
GLADES LANDING
SHEET 3 OF 3

TAL 605
PAGE 3
BOOK 66
PLAT 2008
FLOOD ZONE B
COUNTY KS
ORD #38
SE 84-38
SUB NAME SOLIX
15/17/12