

ANTIGUA POINT

285-013

SHEET 2 OF 4

7

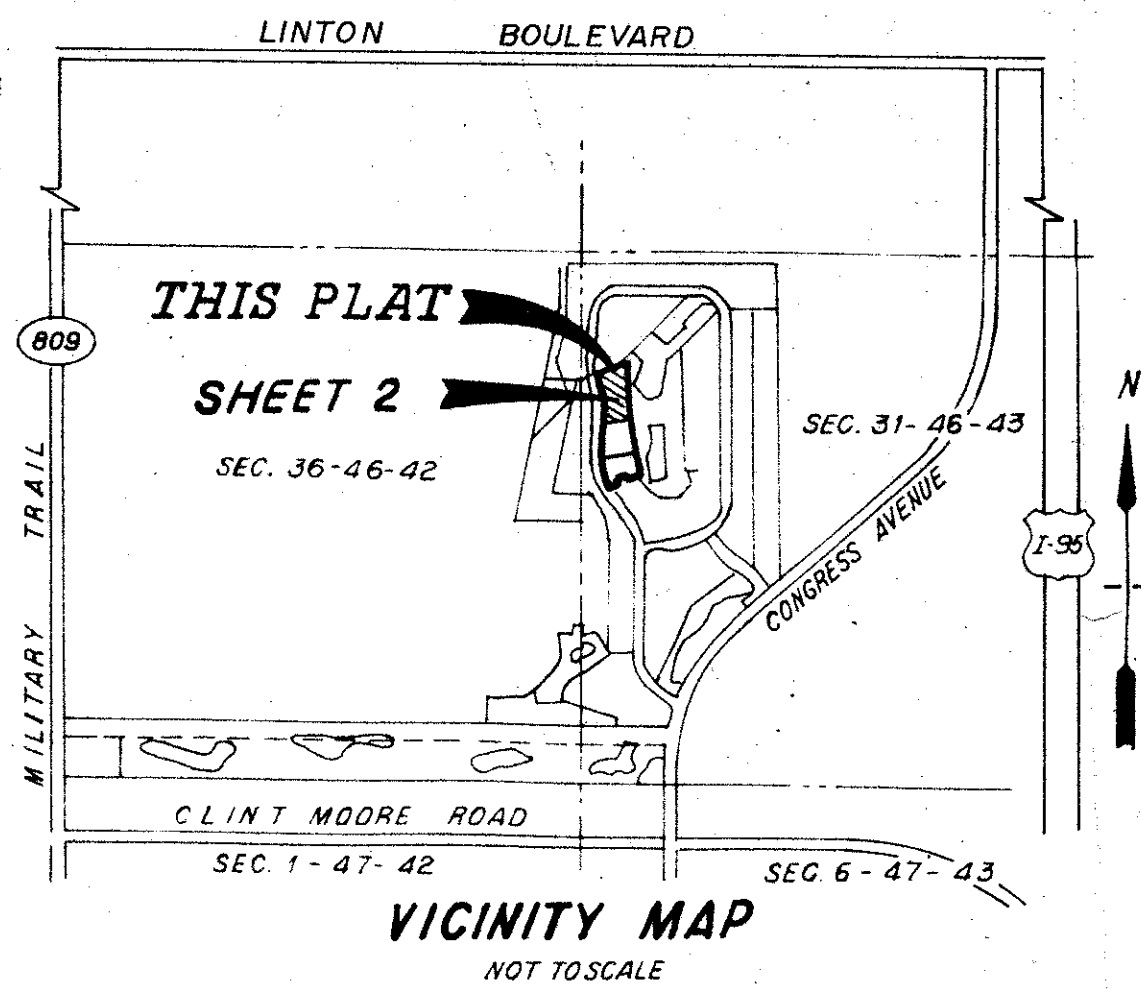
BOCA GOLF AND TENNIS CLUB P.U.D.
A PLAT OF A PORTION OF SECTION 31, TOWNSHIP 46 SOUTH, RANGE 43 EAST, INCLUDING A REPLAT OF A PORTION OF TRACT "J" SPYGLASS WALK (PLAT BOOK 54, PAGE 1)
PALM BEACH COUNTY, FLORIDA

C.C. WINNHAM CORPORATION - LAND SURVEYORS - 1040 N.E. 45TH STREET - OAKLAND PARK, FLORIDA, 33334

SCALE: 1" = 20'



AUGUST, 1989.

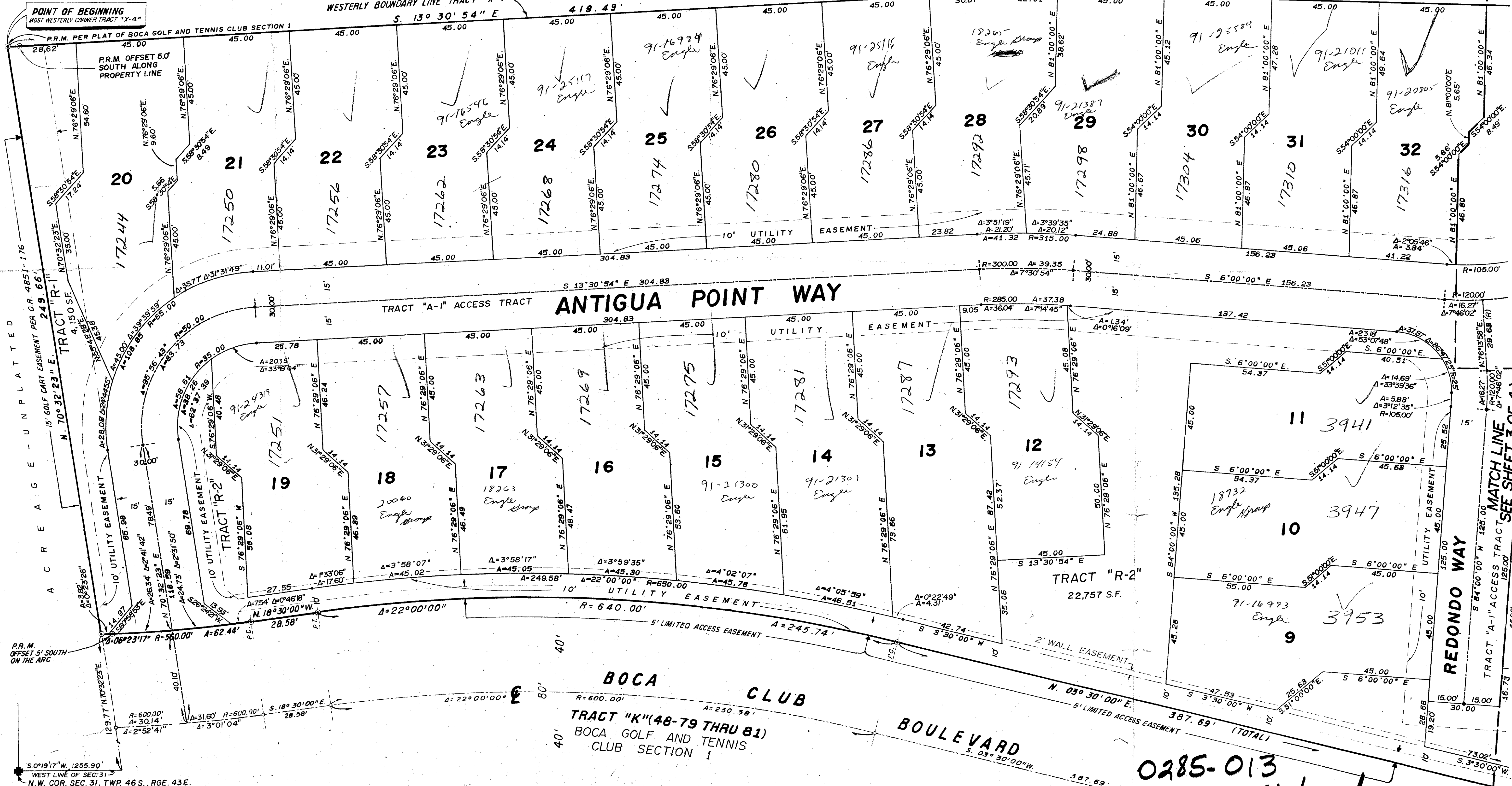


BOCA GOLF AND TENNIS CLUB SECTION 1

TRACT "X-4"
(48-79-81)

TRACT "X-4"
(48-79-81)

WESTERLY BOUNDARY LINE TRACT "X-4"
S. 09° 00' 00" E. 500.21' (TOTAL)



T12 543

BOOK 68
PAGE 7
FLOOD MAP # 220B
ZONING RS
MAP # 22
ZIP CODE 33431
BOCA GOLF & TENNIS CLUB

0285-013
ANTIGUA POINT PET. 81-1 608/7

889.90

DATE: 1.12.2024