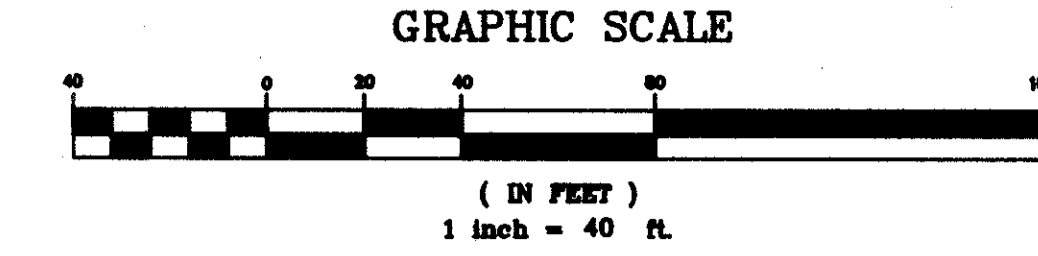


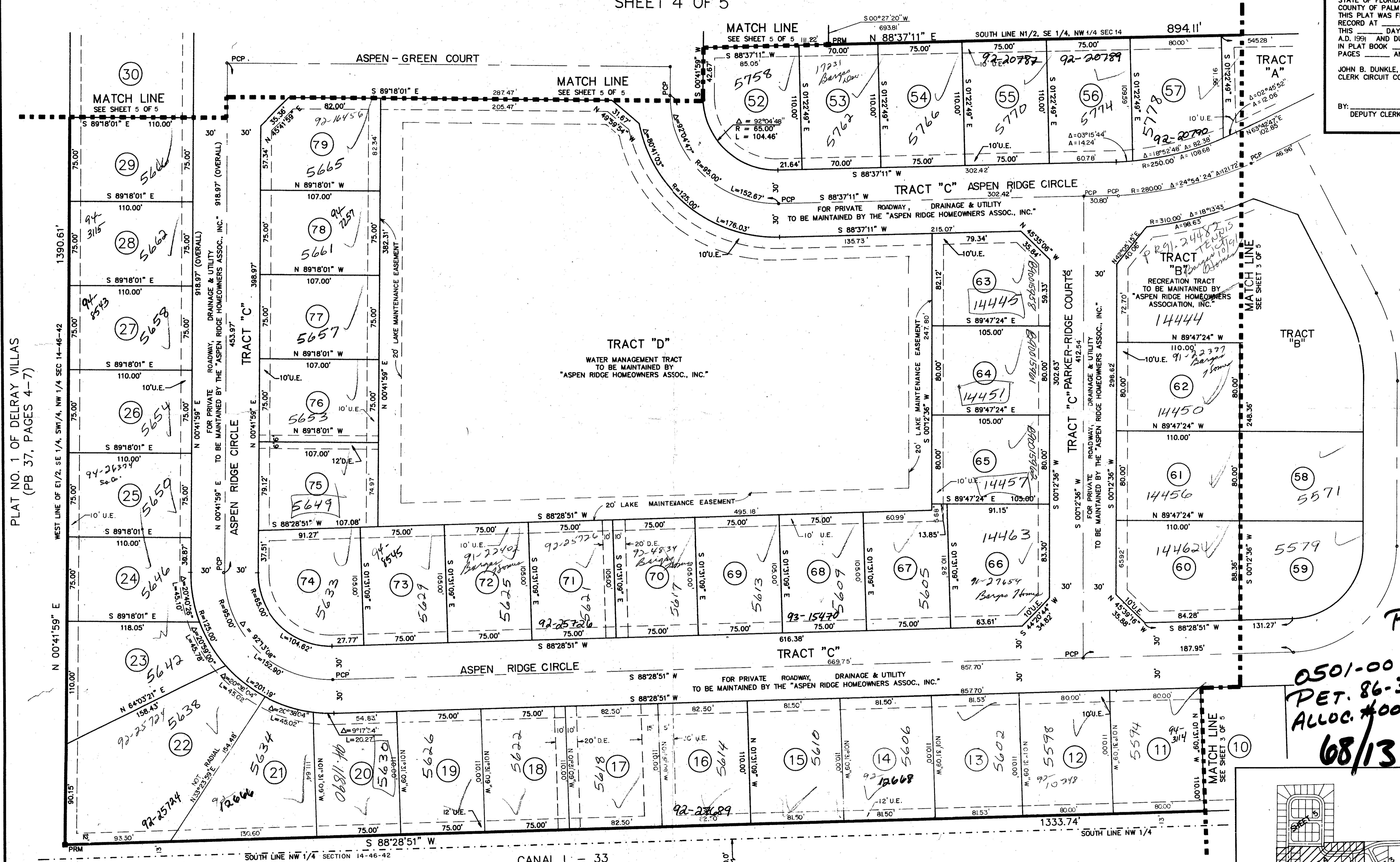
ASPEN RIDGE

0501-CC1

(A PRD.)
SECTION 14, TOWNSHIP 46 SOUTH, RANGE 42 EAST
SHEET 4 OF 5



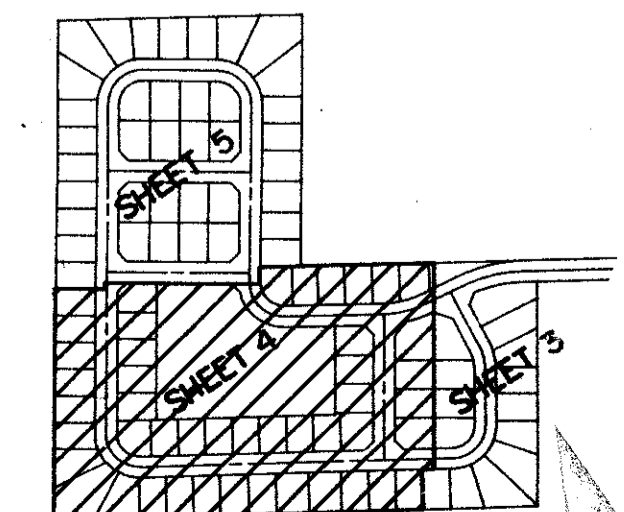
STATE OF FLORIDA
COUNTY OF PALM BEACH
THIS PLAT WAS FILED FOR
RECORD AT _____ M.
THIS _____ DAY OF _____
A.D. 1991 AND DULY RECORDED
IN PLAT BOOK _____ ON
PAGES _____ AND _____
JOHN B. DUNKLE,
CLERK CIRCUIT COURT
BY: _____
DEPUTY CLERK



PLAT NO. 1 OF DELRAY VILLAS
(PB 37, PAGES 4-7)

PLAT NO. 3 OF DELRAY VILLAS
(PB 39, PAGES 198-200)

0501-001
PET. 86-36
ALLOC. #0001
68/13



HERITAGE PARK
(PB 52, PAGES 75, 76)

ASPEN RIDGE

CANAL L - 33
80' L.W.D. EASEMENT
(ORB 3553, PG 984)

TAIL 3410
 0501-001
 PET. 86-36
 ALLOC. #0001
 68/13