

PREPARED BY:  
 MARK S. CAULFIELD  
 OF  
 AVIROM-HALL & ASSOCIATES, INC.  
 50 S.W. 2ND AVENUE, SUITE 102  
 BOCA RATON, FLORIDA, 33432  
 (407) 392-2594

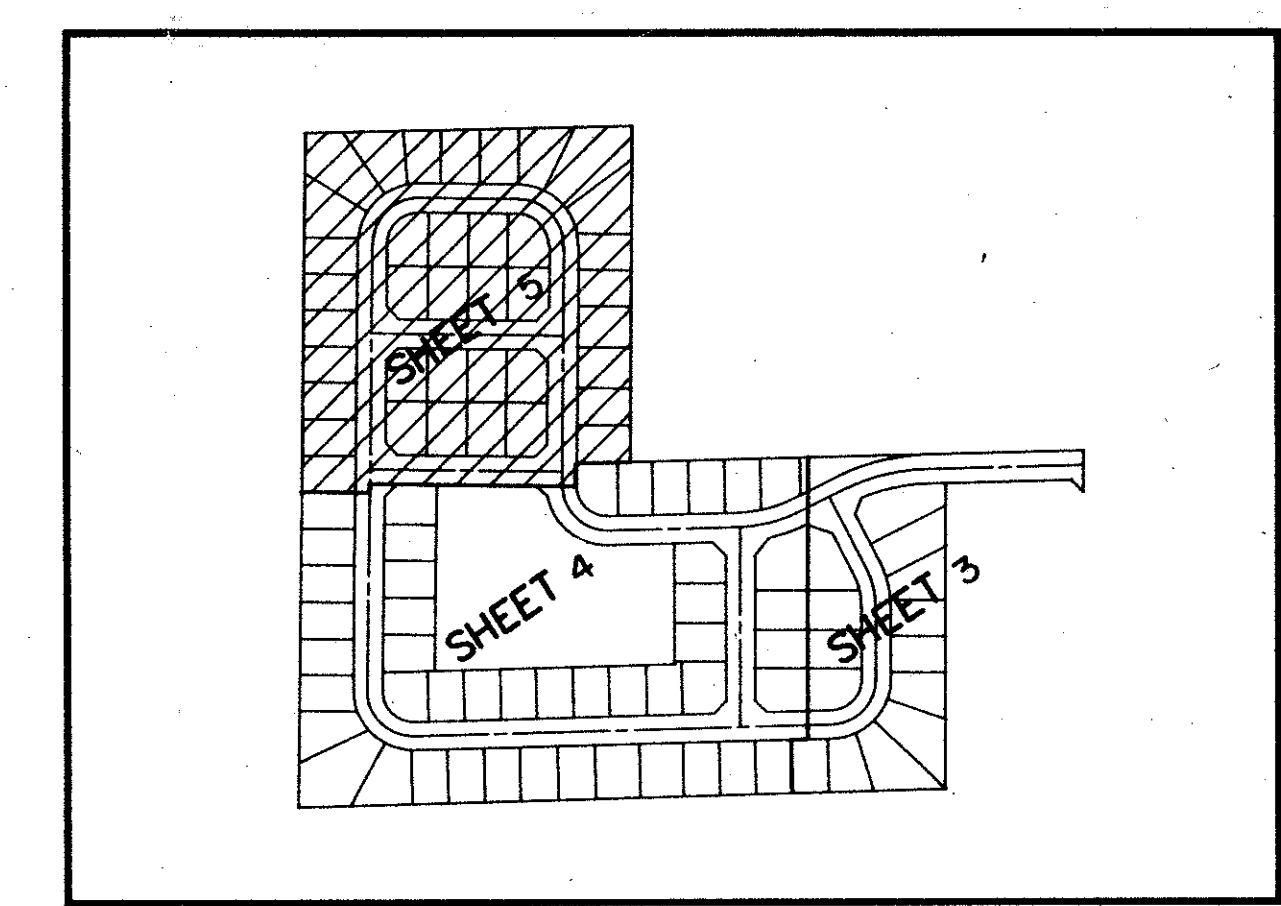
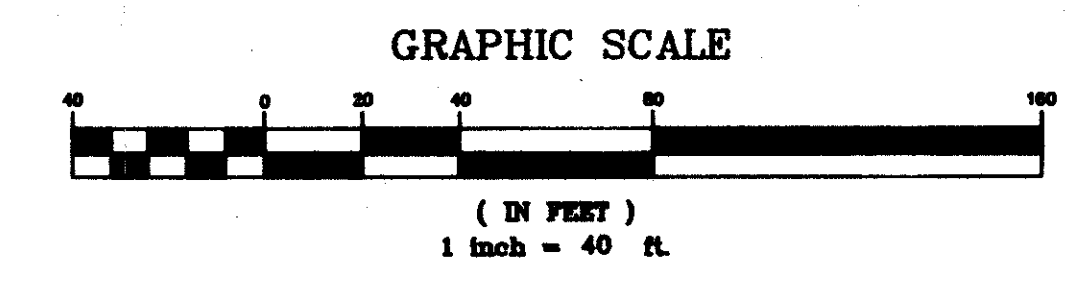
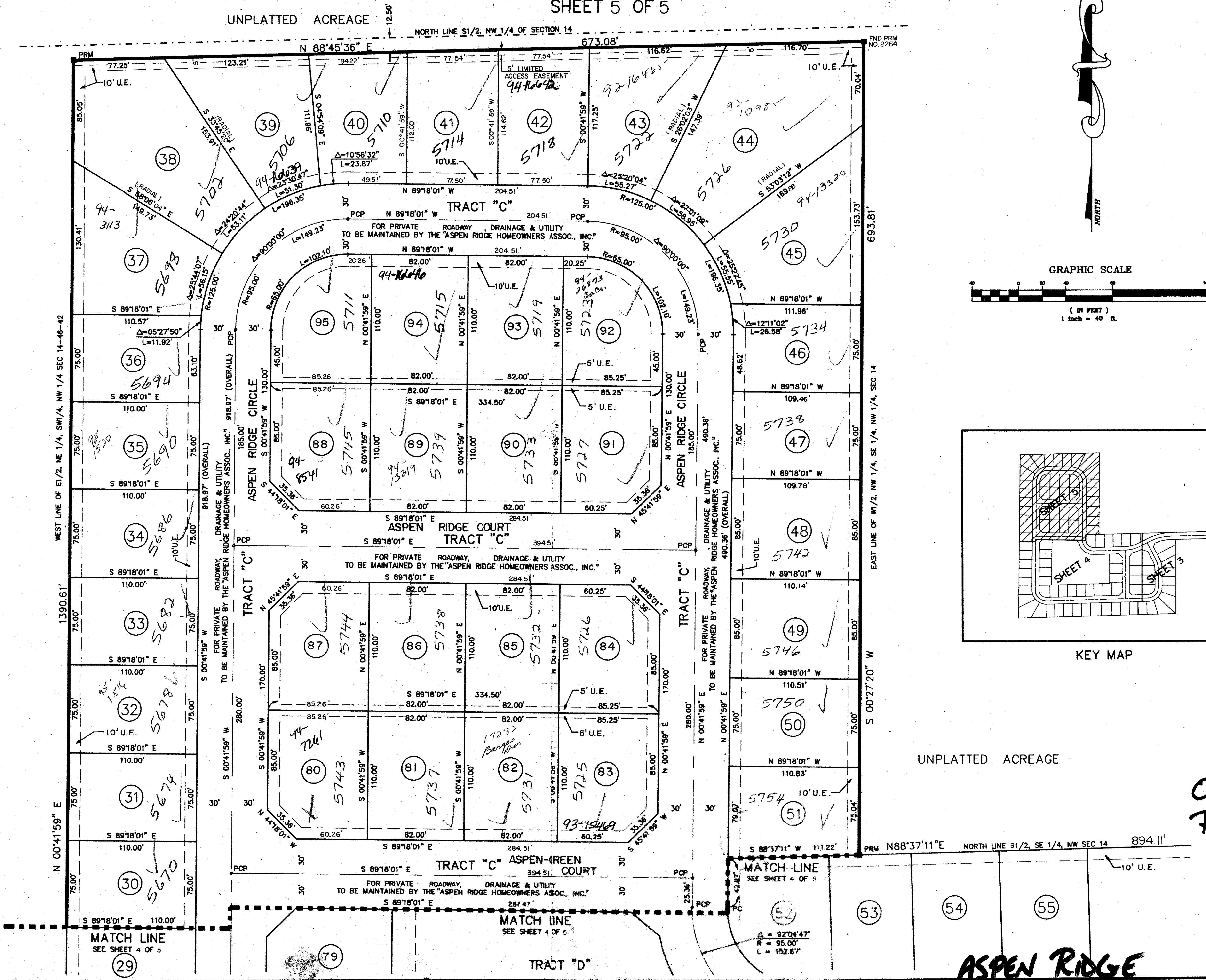
# ASPEN RIDGE

(A PRD.)  
 SECTION 14, TOWNSHIP 46 SOUTH, RANGE 42 EAST  
 SHEET 5 OF 5

0501-001

14

STATE OF FLORIDA  
 COUNTY OF PALM BEACH  
 THIS PLAT WAS FILED FOR  
 RECORD AT \_\_\_\_\_ M.  
 THIS \_\_\_\_\_ DAY OF \_\_\_\_\_  
 A.D. 1991 AND DULY RECORDED  
 IN PLAT BOOK \_\_\_\_\_ ON  
 PAGES \_\_\_\_\_ AND \_\_\_\_\_  
 JOHN B. DUNKLE,  
 CLERK CIRCUIT COURT  
 BY: \_\_\_\_\_  
 DEPUTY CLERK



PLAT NO. 1 OF DELRAY VILLAS  
 (PB 37, PAGES 4-7)

TAL 340

ASPHEN RIDGE  
 SECTION 14  
 TOWNSHIP 46 SOUTH  
 RANGE 42 EAST  
 SHEET 5 OF 5  
 0501-001  
 PET. 86-36  
 ALLOC. #0001  
 PRD  
 08/14

0501-001  
 PET. 86-36  
 ALLOC. #0001  
 PRD  
 08/14