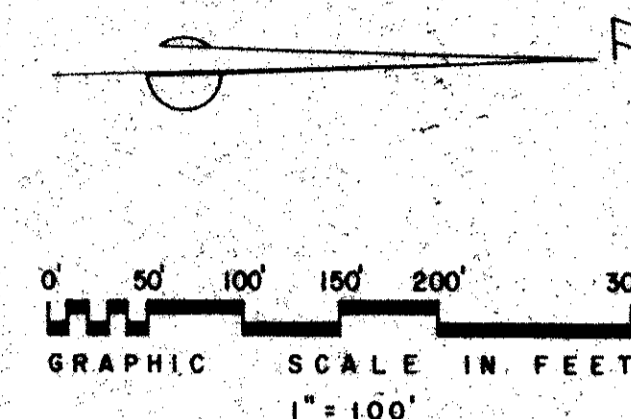


# LOXAHATCHEE LAKES

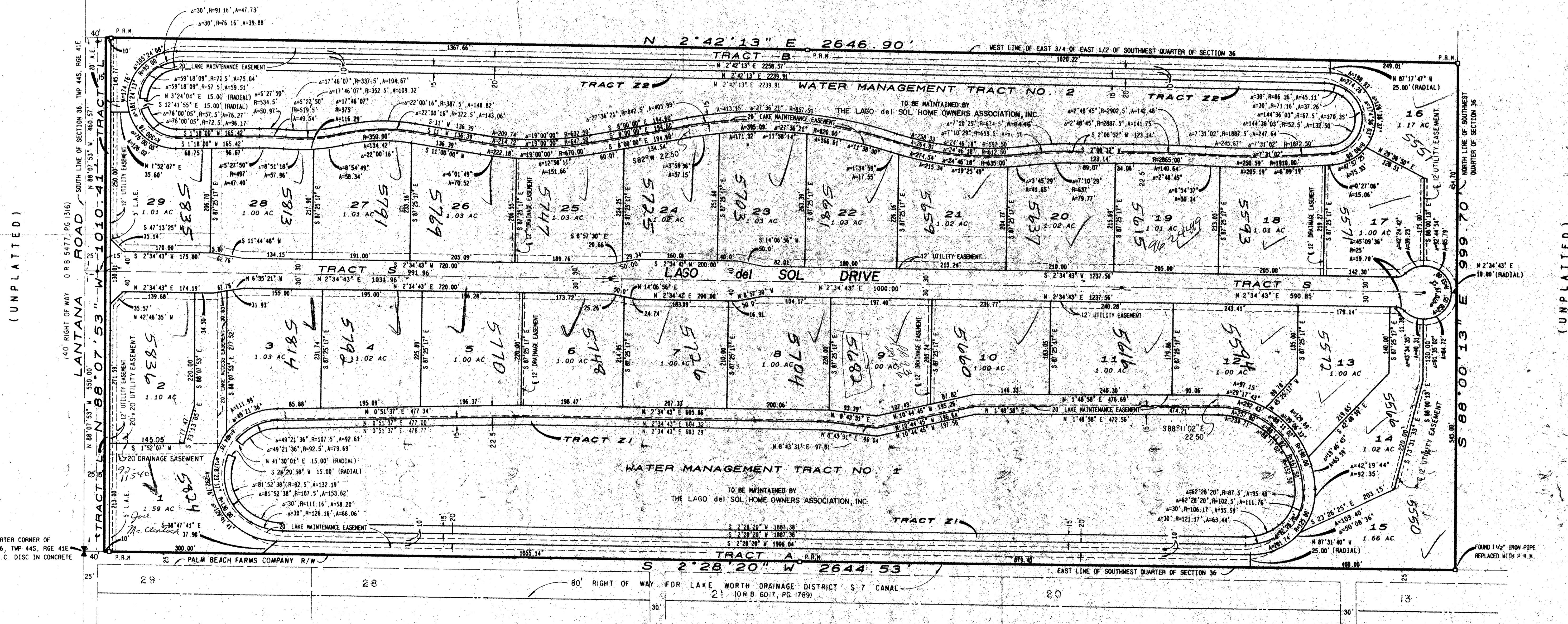
A P.U.D.

FEBRUARY 1990 SHEET 2 OF 2

EWING AND SHIRLEY, INC.  
land surveyors and planners



(UNPLATTED)



(UNPLATTED)

(UNPLATTED)

TAL 751

SUBDIVISION & LOXAHATCHEE LAKES  
BOOK 68  
PAGE 22  
FLOOD ZONE B  
CLASS # 63  
DATE 08/22/90  
SUD NAME SAME

PALM BEACH FARMS COMPANY PLAT NO. 3 (P.B. 2, PGS. 45-54)

BLOCK 35

0502-001  
PET. 88-80  
COLLECT

LOXAHATCHEE LAKES

08/22