

A PART OF A P.U.D.
REPLAT OF A PORTION OF LAKES AT BOCA RATON - PHASE I
 A PLAT OF A PORTION OF SECTION 1, TOWNSHIP 47 SOUTH, RANGE 41 EAST
 AND ALSO BEING A REPLAT OF PARCEL A AND TRACT 7 OF LAKES AT BOCA RATON - PHASE I
 AS RECORDED IN PLAT BOOK 48, PAGES 139-141 OF THE PUBLIC RECORDS OF PALM BEACH COUNTY, FLORIDA
 PALM BEACH COUNTY, FLORIDA

JOHN A. GRANT, JR., INC.

CONSULTING ENGINEERS AND LAND SURVEYORS

BOCA RATON, FLORIDA

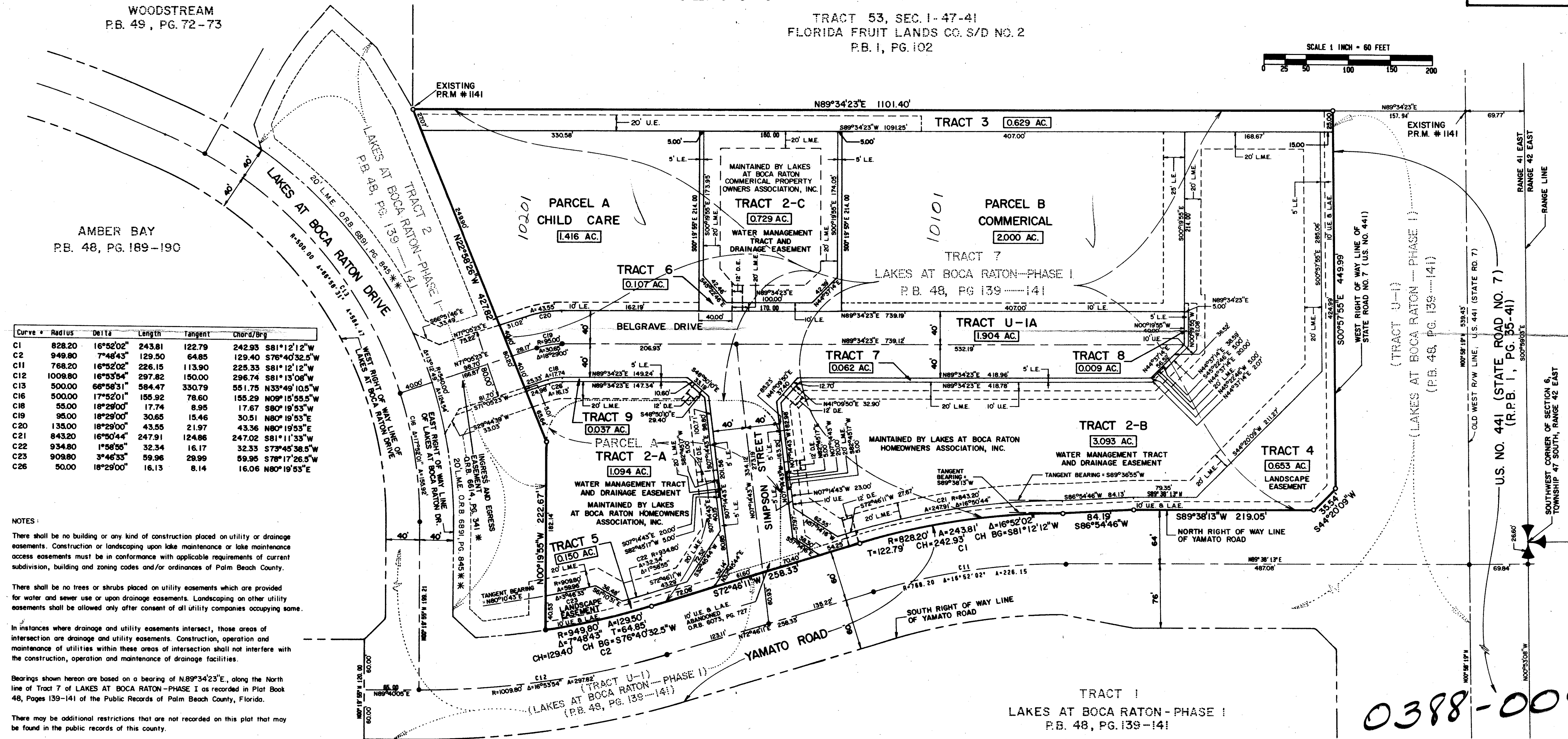
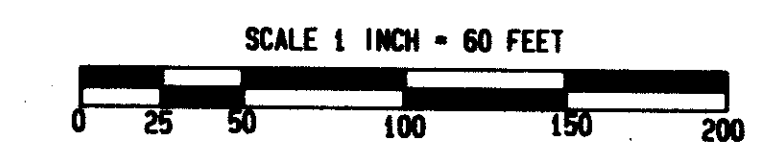
DECEMBER 1990

SHEET 3 OF 3

TRACT 53, SEC. 1-47-41
 FLORIDA FRUIT LANDS CO. S/D NO. 2
 P.B. 1, PG. 102

WOODSTREAM
 P.B. 49, PG. 72-73

AMBER BAY
 P.B. 48, PG. 189-190



Curve	Radius	Delta	Length	Tangent	Chord/Brg
C1	828.20	16°52'02"	243.81	122.79	242.93 S81°12'12"W
C2	949.80	7°46'43"	129.50	64.85	129.40 S76°40'32.5"W
C11	768.20	16°52'02"	226.15	113.90	225.33 S81°12'12"W
C12	1008.80	16°53'54"	297.82	150.00	296.74 S81°13'06"W
C13	500.00	66°56'31"	584.47	330.79	551.75 N33°49'10.5"W
C16	500.00	17°52'01"	155.92	78.60	155.29 N09°15'55.5"W
C18	55.00	18°29'00"	17.74	8.95	17.67 S80°19'53"W
C19	95.00	18°29'00"	30.65	15.46	30.51 N80°19'53"E
C20	135.00	18°29'00"	43.55	21.97	43.36 N80°19'53"E
C21	843.20	16°50'44"	247.91	124.86	247.02 S81°11'33"W
C22	934.80	1°56'56"	32.34	16.17	32.33 S73°45'38.5"W
C23	909.80	3°46'35"	59.96	29.99	59.96 S78°17'26.5"W
C26	50.00	18°29'00"	16.13	8.14	16.06 N80°19'53"E

NOTES:

There shall be no building or any kind of construction placed on utility or drainage easements. Construction or landscaping upon lake maintenance or lake maintenance access easements must be in conformance with applicable requirements of current subdivision, building and zoning codes and/or ordinances of Palm Beach County.

There shall be no trees or shrubs placed on utility easements which are provided for water and sewer use or upon drainage easements. Landscaping on other utility easements shall be allowed only after consent of all utility companies occupying same.

In instances where drainage and utility easements intersect, those areas of intersection are drainage and utility easements. Construction, operation and maintenance of utilities within these areas of intersection shall not interfere with the construction, operation and maintenance of drainage facilities.

Bearings shown herein are based on a bearing of N89°34'23"E, along the North line of Tract 7 of LAKES AT BOCA RATON - PHASE I as recorded in Plat Book 48, Pages 139-141 of the Public Records of Palm Beach County, Florida.

There may be additional restrictions that are not recorded on this plat that may be found in the public records of this county.

- PRM. Indicates Permanent Reference Monument.
- PCP. Indicates Permanent Control Point.
- UE. Indicates Utility Easement.
- D.E. Indicates Drainage Easement.
- L.M.E. Indicates Lake Maintenance Easement.
- L.A.E. Indicates Limited Access Easement.
- L.E. Indicates Landscape Easement.

* The Ingress and Egress Easement recorded at O.R. Book 6614, Page 341 is dedicated to the Lakes at Boca Raton Commercial Property Owners Association, Inc. (Corrective Easement recorded at O.R. Book 6918, Page 237)

** The 20' Lake Maintenance Easement recorded at O.R. Book 6891, Page 845 is dedicated to the Lakes of Boca Raton Property Owners Association, Inc.

This instrument was prepared by:
 John A. Grant, Jr., Inc.
 3333 North Federal Highway
 Boca Raton, Florida 33431.

0388-009

68/103

PET. 83-121(A)
 ALLOC. #0001

REPLAT OF LAKES AT BOCA RATON P.M.T.

TAZ #881

SUBDIVISION * LAKES AT BOCA RATON PH. I
 BOOK 68 PAGE 102
 PLAT BOOK 48 PAGES 189-190
 20' L.M.E. AT 100' RT
 50' L.A.E. AT 100' RT
 50' L.A.E. AT 100' RT
 50' L.A.E. AT 100' RT
 50' L.A.E. AT 100' RT