

CYPRESS LAKES PLAT No 11

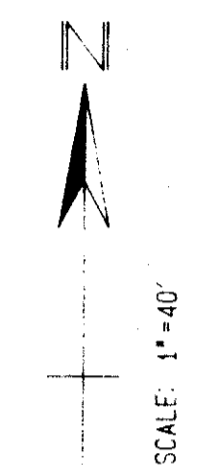
A PLANNED UNIT DEVELOPMENT IN CYPRESS LAKES
LYING IN SECTION 14, TOWNSHIP 43 SOUTH, RANGE 42 EAST,
PALM BEACH COUNTY, STATE OF FLORIDA,
BEING A REPLAT OF A PORTION OF THE PLAT
OF CYPRESS LAKES PLAT No. 5 RECORDED IN
PLAT BOOK 43 AT PAGES 131 AND 132,
PUBLIC RECORDS OF PALM BEACH COUNTY
FEBRUARY 1991 IN 3 SHEETS, SHEET No 3

NE CORNER OF SECTION 14
P.B. COUNTY BRASS DISK FD 14 13

0234-009

110

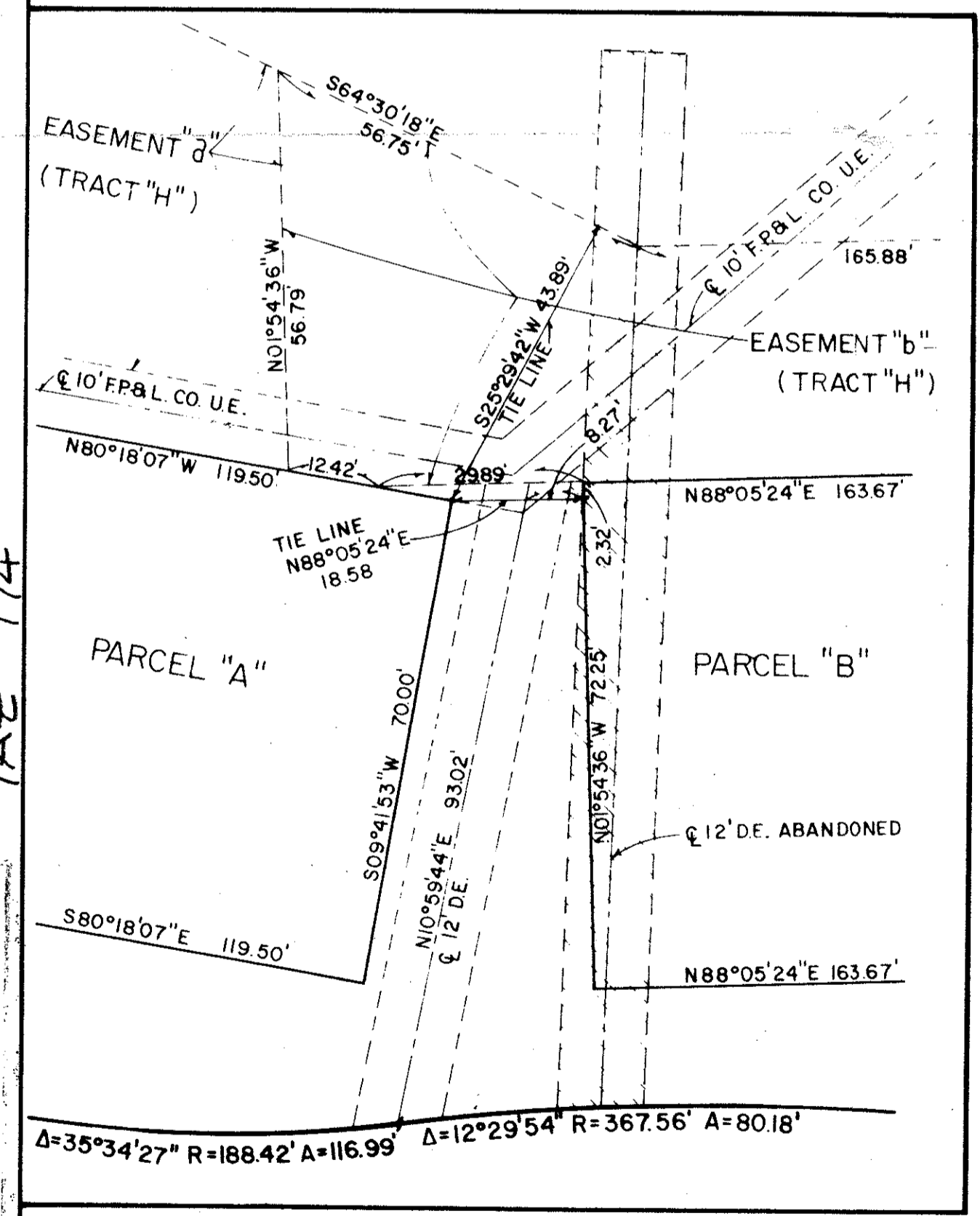
STATE OF FLORIDA SS
COUNTY OF PALM BEACH
This plat was filed for record at
A.M. this day of
1991 and duly recorded in Plat Book
No. on page
JOHN B. DUNKLE, Clerk Circuit Court
By: D.C.



GRAPHIC SCALE IN FEET
1 INCH = 40 FEET

LEGEND

- P.R.M. FD INDICATES PERMANENT REFERENCE MONUMENT FOUND (WITHOUT IDENTIFICATION DISC)
- P.R.M. INDICATES PERMANENT REFERENCE MONUMENT SET PER THIS PLAT (PLS. 234C)
- U.E. INDICATES UTILITY EASEMENT
- F.P.&L. INDICATES FLORIDA POWER & LIGHT
- D.E. INDICATES DRAINAGE EASEMENT
- P.R.C. INDICATES POINT REVERSE CURVE
- L.A.E. INDICATES LIMITED ACCESS EASEMENT



DETAIL
SCALE 1"=20'

CYPRESS LAKES, PLAT No. 2
P.B. 37 PGS. 148 THRU. 151

CYPRESS LAKES, PLAT No. 3A
P.B. 38 PGS. 155 THRU. 158
WATER MANAGEMENT TRACT "4"

CYPRESS LAKES, PLAT No 2,
P.B. 37 PGS. 148 THRU 151

CYPRESS BOULEVARD
TRACT S-1 (PLAT No 2)

CYPRESS TRAIL
TRACT S-1 (PLAT No 2)
R=580.00' Δ=27°45'06"

EXISTING 2 STORY CBS RES. BLDG.
8 UNITS
PARCEL "A"
SEE DETAIL

CYPRESS LAKES PLAT No. 5,
P.B. 43 PGS. 131, 132
WATER MANAGEMENT TRACT "A"

CYPRESS LAKES, PLAT No. 5,
P.B. 43 PGS. 131, 132

CYPRESS LAKES PLAT No. 5, A.P.U.D.
P.B. 43 PGS. 131, 132

Q. OF HAVERHILL ROAD R/W

THE EAST 1/4
CORNER OF
SECTION 14
P.O.C.

F.R.S. & ASSOCIATES
LAND SURVEYORS
WEST PALM BEACH, FLORIDA

SCALE 1"=40' APPROVED BY

DRAWN BY J.P.
JOB NO. 89-S-44
DRAWING NUMBER

PLAT OF CYPRESS LAKES
PLAT NO. 11, A.P.U.D.
IN 3 SHEETS SHEET NO. 3

0234-008

PET. 77-46
N

68/110

SUBDIVISION CYPRESS LAKES PLAT NO. 11
BOOK 68 PAGE 110
FLOOR PLAN B PLANNED UNIT DEVELOPMENT
QUAD 30
RS
77-46
SCALE
DATE