

# LAKE CHARLESTON PARCEL "D"

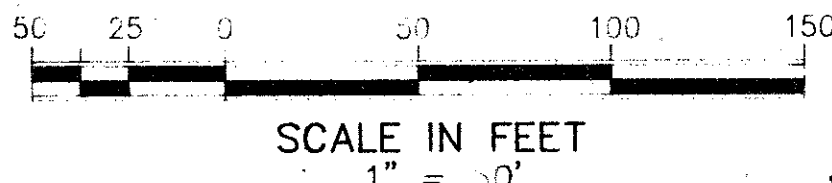
## A PART OF LAKE CHARLESTON PLANNED UNIT DEVELOPMENT

BEING A REPLAT OF TRACT D OF LAKE CHARLESTON PLAT No. 1 AS RECORDED IN PLAT BOOK 60, PAGES 147-151, PUBLIC RECORDS PALM BEACH COUNTY, FLORIDA SECTION 10, TOWNSHIP 45 SOUTH, RANGE 42 EAST, PALM BEACH COUNTY, FLORIDA

PREPARED BY  
WILLIAM A. HALL, P.L.S.  
AVIROM-HALL and ASSOCIATES, INC.  
LAND SURVEYING

50 S.W. 2nd AVENUE, SUITE 102  
BOCA RATON, FLORIDA 33432

AUGUST, 1991



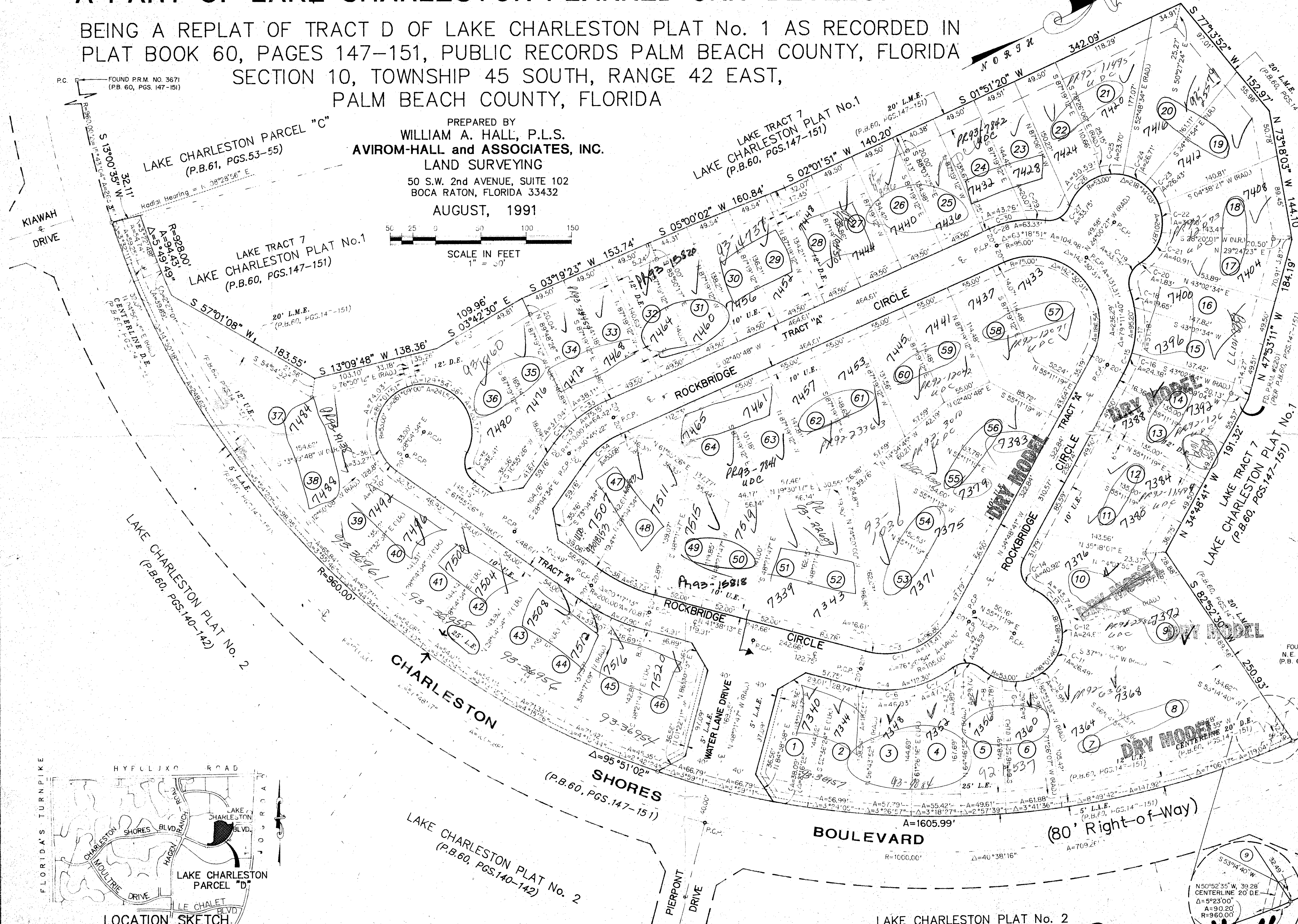
144

STATE OF FLORIDA  
COUNTY OF PALM BEACH

This plat was filed for record at this day of 1990 and duly recorded in Plat Book on pages through

Milton T. Bauer  
Clerk of Circuit Court  
By:

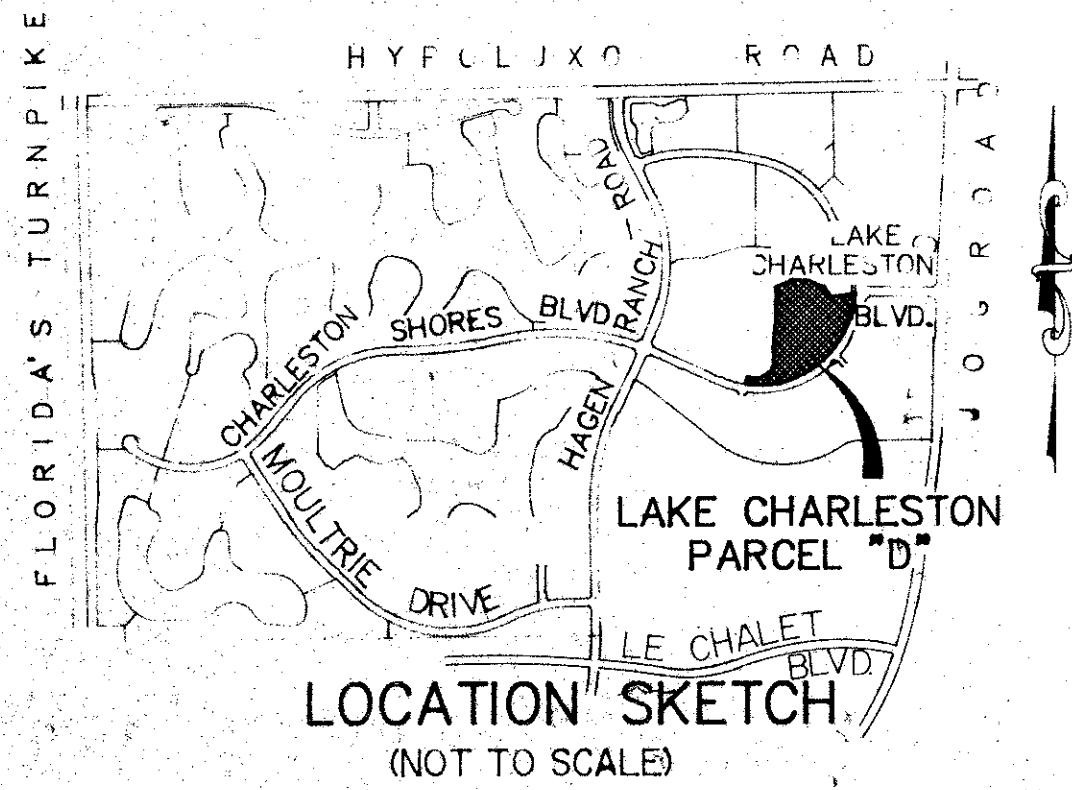
SHEET 2 of 2



| CURVE | RADIUS  | LENGTH  | DELTA     |
|-------|---------|---------|-----------|
| C-1   | 85.00'  | 113.41' | 75°26'54" |
| C-2   | 85.00'  | 16.61'  | 11°11'49" |
| C-3   | 85.00'  | 96.80'  | 65°15'05" |
| C-4   | 175.00' | 112.30' | 51°28'17" |
| C-5   | 125.00' | 18.25'  | 08°22'05" |
| C-6   | 125.00' | 46.93'  | 21°35'48" |
| C-7   | 125.00' | 47.12'  | 21°35'48" |
| C-8   | 53.00'  | 25.78'  | 27°52'10" |
| C-9   | 53.00'  | 34.62'  | 37°25'17" |
| C-10  | 53.00'  | 25.95'  | 28°03'12" |
| C-11  | 53.00'  | 26.49'  | 28°38'19" |
| C-12  | 53.00'  | 24.61'  | 26°38'58" |
| C-13  | 53.00'  | 45.74'  | 49°26'50" |
| C-14  | 25.00'  | 40.92'  | 47°25'50" |
| C-15  | 115.00' | 95.20'  | 47°25'50" |
| C-16  | 115.00' | 24.38'  | 12°08'45" |
| C-17  | 115.00' | 51.18'  | 25°24'49" |
| C-18  | 115.00' | 19.65'  | 09°47'16" |
| C-19  | 25.00'  | 33.75'  | 77°21'12" |
| C-20  | 53.00'  | 1.83'   | 01°58'43" |
| C-21  | 53.00'  | 40.91'  | 44°13'20" |
| C-22  | 53.00'  | 31.70'  | 34°16'17" |
| C-23  | 53.00'  | 26.47'  | 28°34'23" |
| C-24  | 53.00'  | 26.71'  | 28°52'32" |
| C-25  | 53.00'  | 23.70'  | 25°37'52" |
| C-26  | 53.00'  | 50.59'  | 54°41'16" |
| C-27  | 25.00'  | 33.75'  | 77°21'12" |
| C-28  | 115.00' | 63.33'  | 31°33'02" |
| C-29  | 115.00' | 20.07'  | 09°59'50" |
| C-30  | 115.00' | 43.26'  | 21°33'12" |
| C-31  | 140.00' | 75.15'  | 30°45'22" |
| C-32  | 140.00' | 37.04'  | 15°09'35" |
| C-33  | 140.00' | 38.11'  | 15°35'48" |
| C-34  | 100.00' | 53.68'  | 30°45'22" |
| C-35  | 25.00'  | 35.41'  | 81°09'00" |
| C-36  | 53.00'  | 35.27'  | 35°58'05" |
| C-37  | 53.00'  | 14.10'  | 15°14'26" |
| C-38  | 180.00' | 63.73'  | 20°17'13" |
| C-39  | 220.00' | 77.90'  | 20°17'13" |
| C-40  | 220.00' | 39.20'  | 10°12'35" |
| C-41  | 220.00' | 38.69'  | 10°04'38" |
| C-42  | 75.00'  | 34.59'  | 19°54'48" |
| C-43  | 75.00'  | 4.69'   | 11°21'07" |
| C-44  | 75.00'  | 29.70'  | 68°03'41" |

TAZ 439

SUBDIVISION - LAKE CHARLESTON PARCEL D  
BOOK 68  
FLOOD MAP # 185A  
QUAD # 34  
SE 26-96  
ZIP CODE 33467  
PUD NAME - KANGA



PET. 86-96  
0533-012

LAKE CHARLESTON PARCEL "D" 08/144