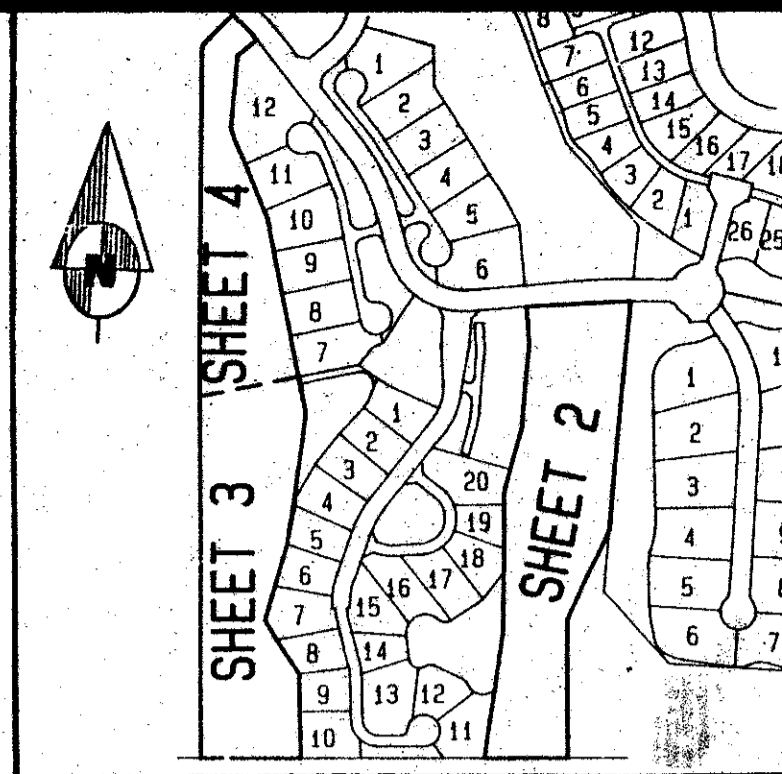


DUNES PLAT NO. 1 HOLES 14 AND 16

OF PALM BEACH POLO AND COUNTRY CLUB
WELLINGTON - P. U. D.

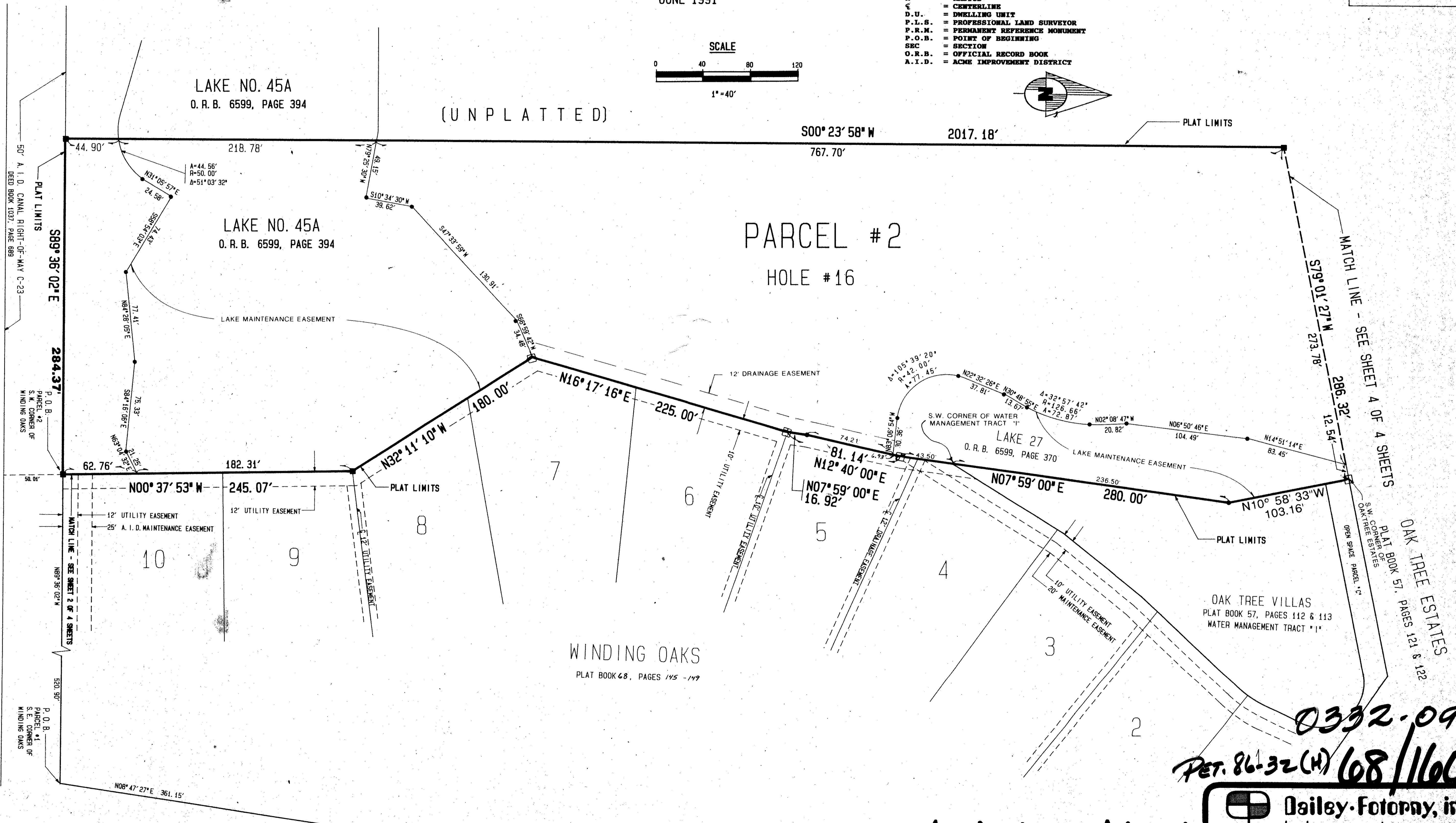
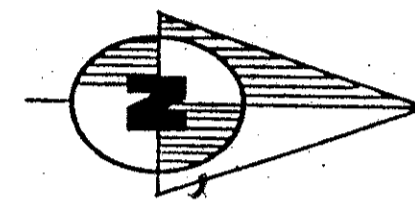
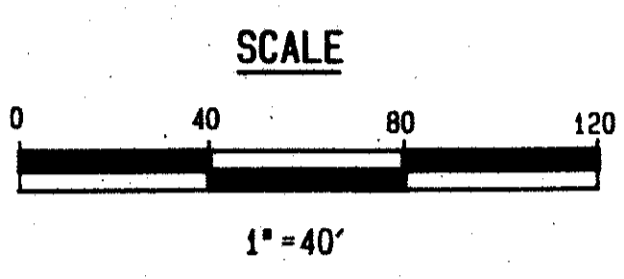
LYING IN PART OF SECTION 14
TOWNSHIP 44 SOUTH, RANGE 41 EAST
PALM BEACH COUNTY, FLORIDA

SHEET 3 OF 4 SHEETS
JUNE 1991



INDEX MAP

- LEGEND**
- P.B.C. = PALM BEACH COUNTY
 - NO. = NUMBER
 - P.U.D. = PLANNED UNIT DEVELOPMENT
 - ± = MORE OR LESS
 - A = ARC LENGTH
 - Δ = CENTRAL ANGLE
 - R = RADIUS
 - ☉ = CENTERLINE
 - D.U. = DWELLING UNIT
 - P.L.S. = PROFESSIONAL LAND SURVEYOR
 - P.R.M. = PERMANENT REFERENCE MONUMENT
 - P.O.B. = POINT OF BEGINNING
 - SEC = SECTION
 - O.R.B. = OFFICIAL RECORD BOOK
 - A.I.D. = ACME IMPROVEMENT DISTRICT



TAZ # 770

BOOK 108
PAGE 160
FLOOD ZONE PD-1
FLOOD ZONE ZONING
QUAD # 62
SE
PLAT NAME Wellington, P.U.D.
PARCEL # 2
S.W. CORNER OF
WINDING OAKS

0332-099
PET. 86-32 (H) 68/160

DUNES PLAT No. 1, HOLES 14 & 16

Dailey-Fotony, inc.
land surveyors, planners, engineers
5050 10th Avenue North, Suite B Lake Worth, Florida 33463 2002
Phone 407-965-8787