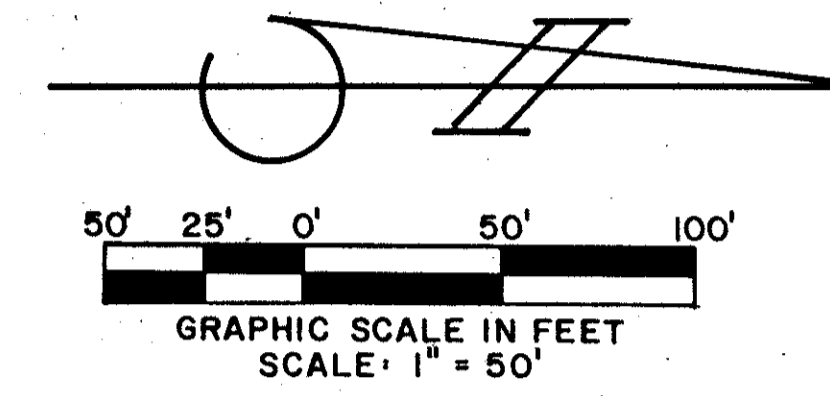


# BREAKERS WEST PLAT NO. 18B

"A PART OF A PLANNED UNIT DEVELOPMENT"  
BEING A REPLAT OF TRACT L OF BREAKERS WEST PLAT NO. 18  
AS RECORDED IN PLAT BOOK 67 AT PAGES 187 THROUGH 194  
SITUATE IN SECTION 30, TOWNSHIP 43 SOUTH, RANGE 42 EAST,  
PALM BEACH COUNTY, FLORIDA

NOVEMBER 1991

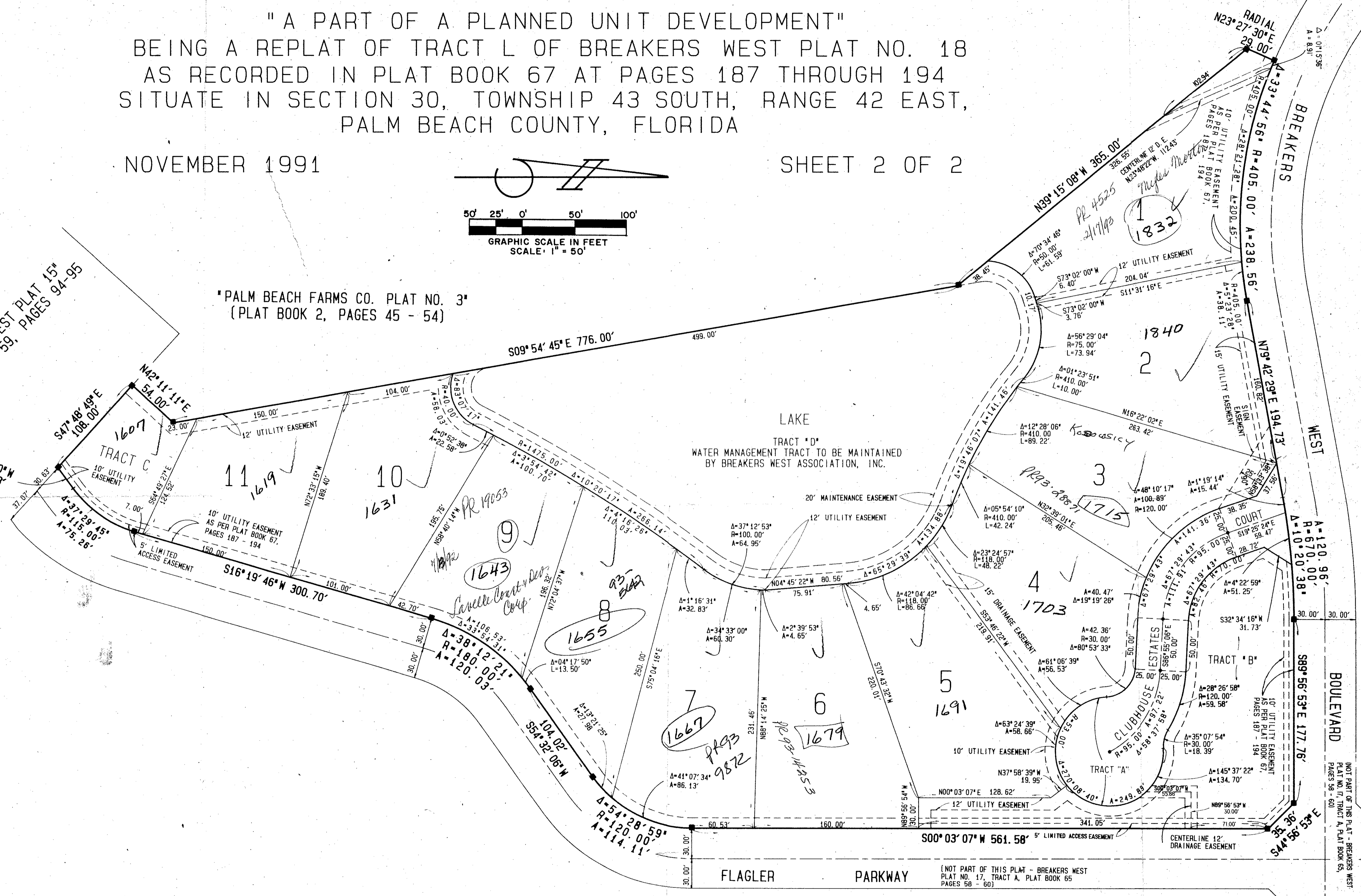
SHEET 2 OF 2



BREAKERS WEST PLAT 15  
(PLAT BOOK 59, PAGES 94-95)

PALM BEACH FARMS CO. PLAT NO. 3  
(PLAT BOOK 2, PAGES 45 - 54)

BREAKERS WEST PLAT NO. 18  
(PLAT BOOK 67, PAGES 187-194)



TAZ # B17

BOOK 68  
FLOOD ZONE B  
QUAD # 46  
SE # 73-219  
FUD NAME Same  
30/13/12

PET. 73-219C  
NOT COLLECTED  
UNDER PETITION

0217-018

68/185

BREAKERS WEST PLAT NO. 18  
(PLAT BOOK 67, PAGES 187-194)

(Parcel B)  
SITE PLAN

STANLEY CONSULTANTS  
OF FLORIDA, INC.  
ENGINEERS • PLANNERS • SURVEYORS  
2000 LOMBARD STREET, WEST PALM BEACH, FL 33407

BREAKERS WEST PLAT 18B

DRAWN CADD/MSE/DCL	FIELD BOOK NO. Pg.	DATE NOV. 1991	JOB NO.	SHEET 2
DESIGNED	CHECKED DCL	SCALE 1" = 50'	DRAWN BY BWBB	2