

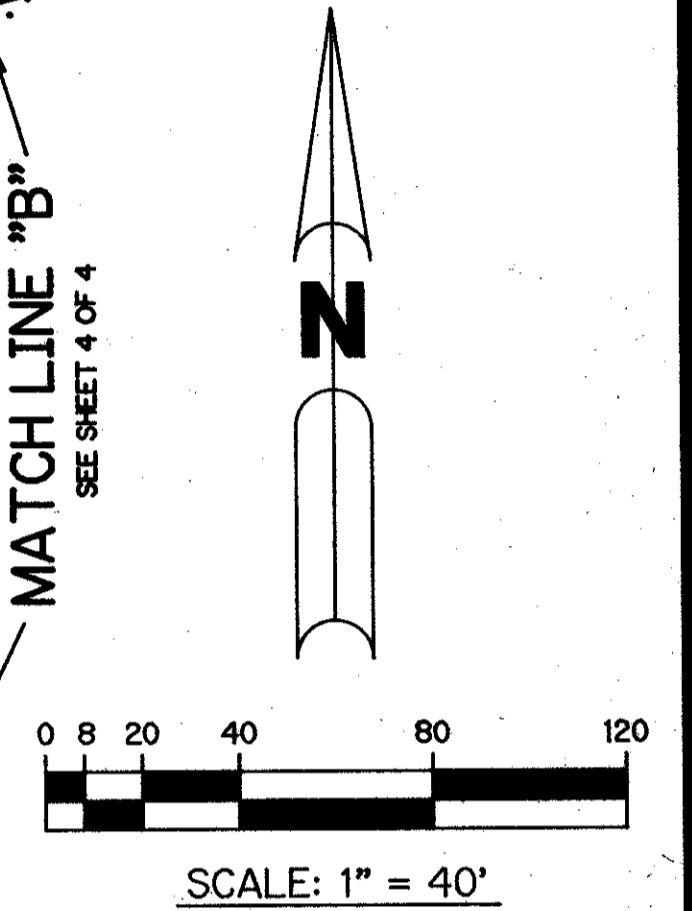
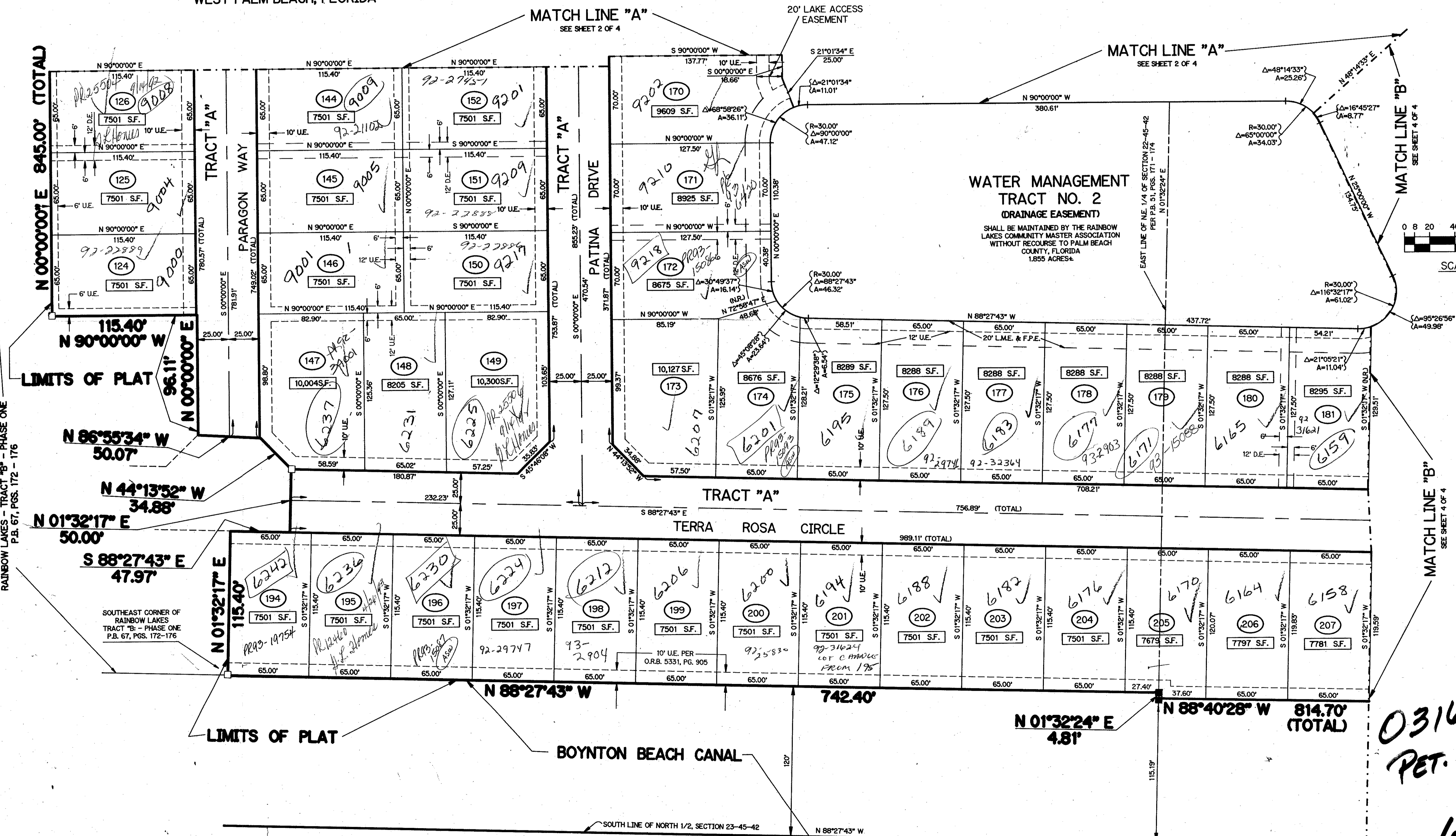
RAINBOW LAKES - TRACT "B" - PHASE TWO

(A P.U.D.)

A REPLAT OF A PORTION OF TRACT "B" ACCORDING TO THE PLAT OF TARTAN LAKES PLAT NO. 3 - P.U.D. AS RECORDED IN PLAT BOOK 51, PAGES 170 THROUGH 174, INCLUSIVE, OF THE PUBLIC RECORDS OF PALM BEACH COUNTY, FLORIDA.
 SECTIONS 22 AND 23, TOWNSHIP 45 SOUTH, RANGE 42 EAST
 SHEET 3 OF 4 JANUARY, 1992

THIS INSTRUMENT PREPARED BY
 PERRY C. WHITE P.L.S. 4213 STATE OF FLORIDA
 LAWSON, NOBLE AND ASSOCIATES, INC.
 ENGINEERS PLANNERS SURVEYORS
 WEST PALM BEACH, FLORIDA

KEY MAP
 N.T.S.



TAZ = 444

SUBDIVISION: RAINBOW LAKES TRACT B
 PHASE 2
 BECK 69
 FLOOD ZONE B
 QUAD # 35
 ZIP CODE 33437
 RID NAME Same

0316-011
 PET. 79-177C

69/33

RAINBOW LAKES - TRACT "B" - PHASE 2