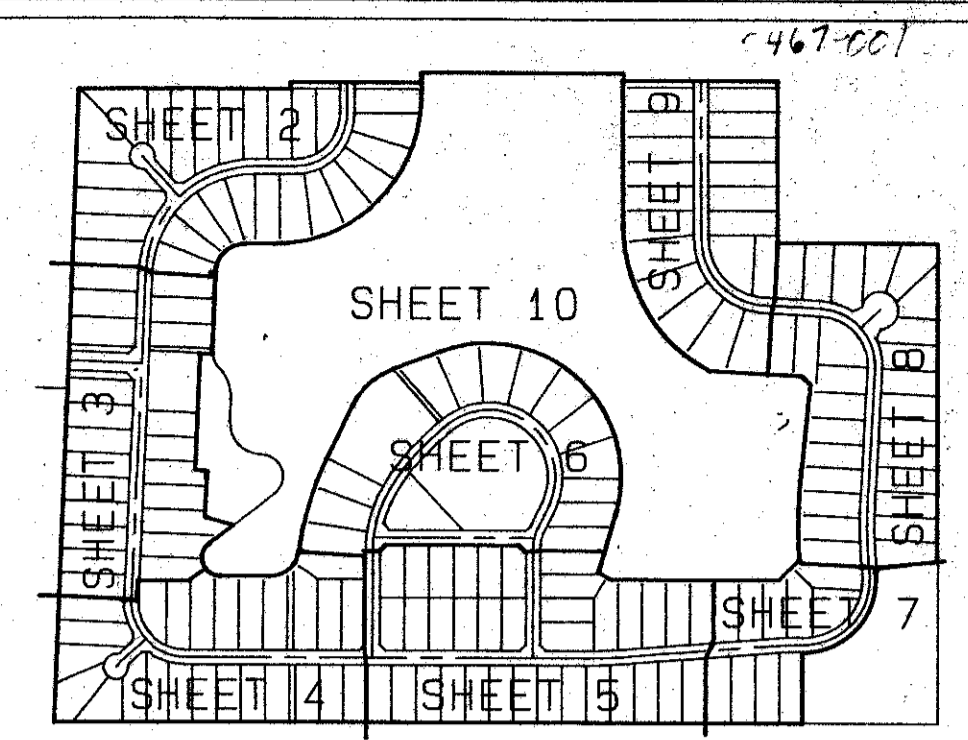


LEGEND LAKE ESTATES

A REPLAT OF A PORTION OF "THE HUNT", P. U. D., PLAT BOOK 32, PAGES 119 THOUGH 125
SITUATE IN SECTION 30 AND 31, TOWNSHIP 44 SOUTH, RANGE 42 EAST,
PALM BEACH COUNTY, FLORIDA.

JANUARY, 1992

SHEET 2 OF 10



40

STATE OF FLORIDA)
COUNTY OF PALM BEACH) SS
THIS PLAT WAS FILED FOR
RECORD AT _____ DAY OF
THIS _____ MO, 1992 AND
DULY RECORDED IN PLAT BOOK
_____ ON PAGES

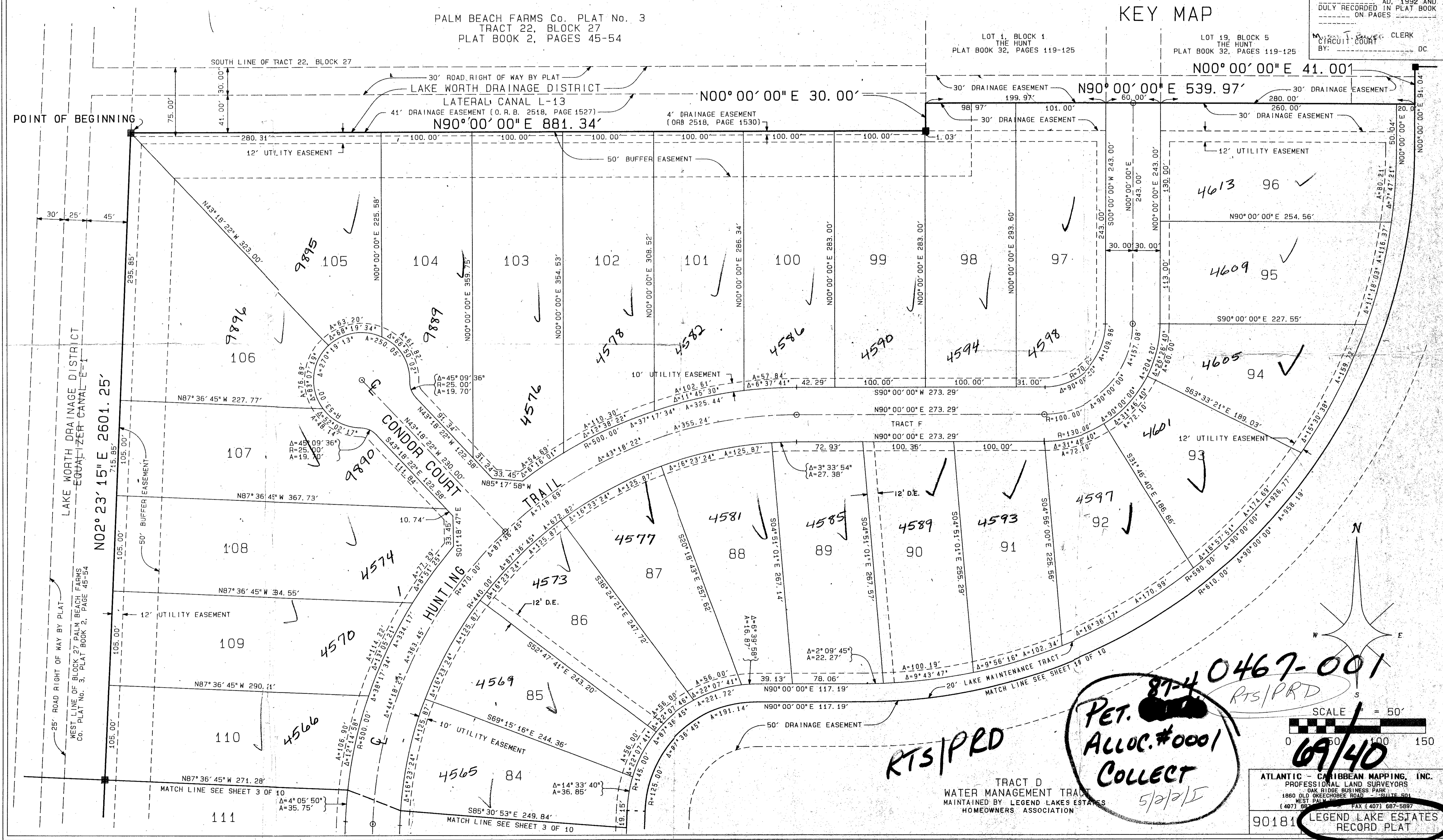
BY: _____ CLERK
CIRCUIT COURT
BY: _____ DC

PALM BEACH FARMS Co. PLAT No. 3
TRACT 22, BLOCK 27
PLAT BOOK 2, PAGES 45-54

LOT 1, BLOCK 1
THE HUNT
PLAT BOOK 32, PAGES 119-125

LOT 19, BLOCK 5
THE HUNT
PLAT BOOK 32, PAGES 119-125

KEY MAP



TAZ-738

SUBDIVISION * LEGEND LAKE ESTATES
BOOK 69 PAGE 40
FLOOD MAP * FEMA
ZONING KE
QUAD # 48
ZIP CODE 33467
SE
PUD NAME THE HUNT
BY

87-4 0467-001
RTS/PRD
PET. ~~_____~~
ALLOC. #0001
COLLECT
5/2/92



ATLANTIC - CARIBBEAN MAPPING, INC.
PROFESSIONAL LAND SURVEYORS
OAK RIDGE BUSINESS PARK
1880 OLD OKEECHOBEE ROAD - SUITE 501
WEST PALM BEACH, FLORIDA 33411
(407) 587-5897 FAX (407) 587-5897
90181 LEGEND LAKE ESTATES
RECORD PLAT