

LEGEND LAKE ESTATES

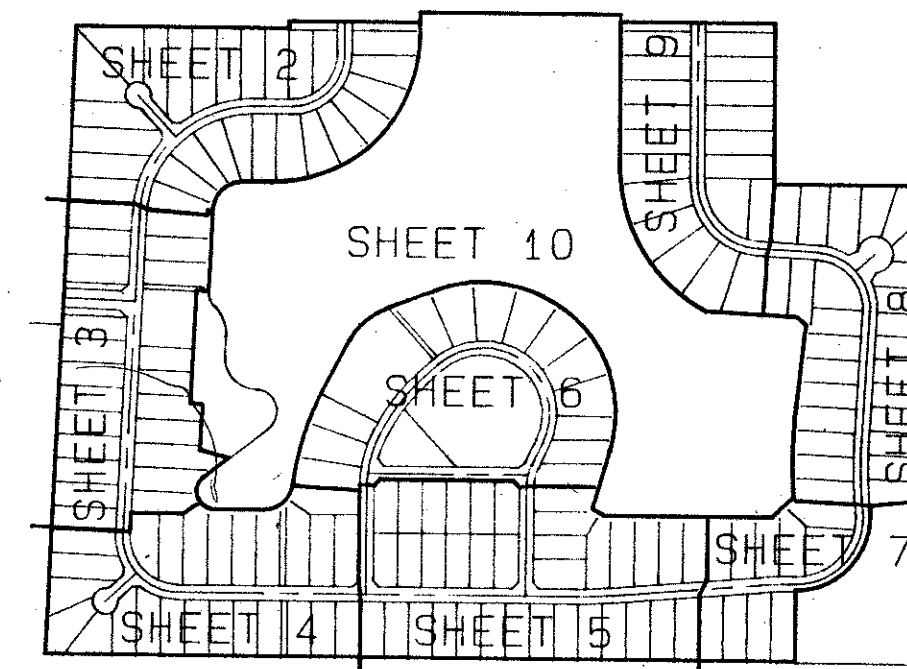
0467-001

44

A REPLAT OF A PORTION OF "THE HUNT", P. U. D., PLAT BOOK 32, PAGES 119 THROUGH 125
SITUATE IN SECTION 30 AND 31, TOWNSHIP 44 SOUTH, RANGE 42 EAST,
PALM BEACH COUNTY, FLORIDA.

JANUARY, 1992

SHEET 6 OF 10

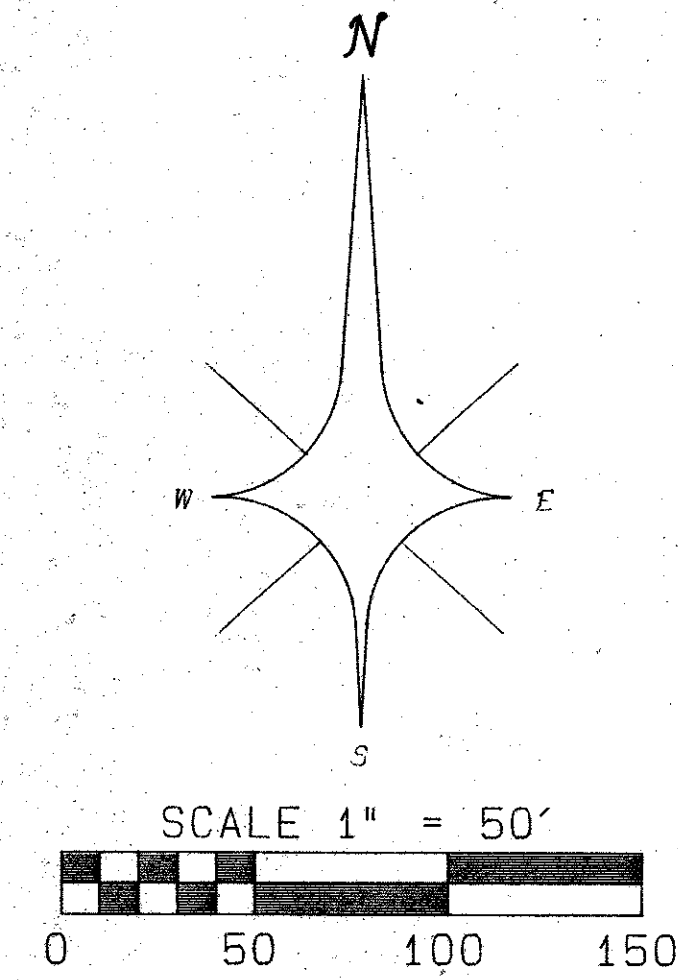


KEY MAP

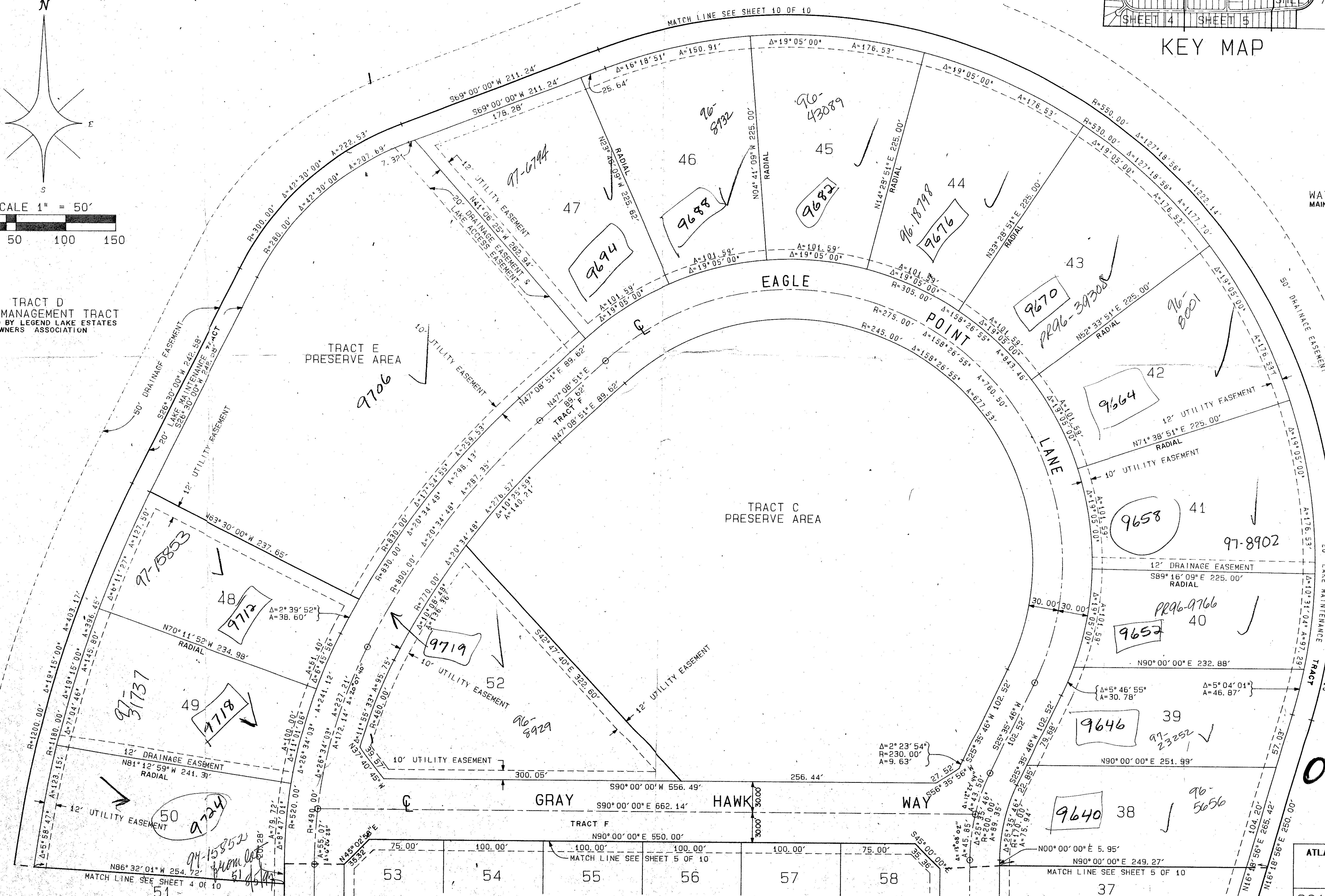
STATE OF FLORIDA }
COUNTY OF PALM BEACH } SS
THIS PLAT WAS FILED FOR
RECORD AT _____ DAY OF
THIS _____ AD, 1992 AND
DULY RECORDED IN PLAT BOOK
_____ ON PAGES _____ AND

Clerk
CIRCUIT COURT
BY: _____ DC

TRACT D
WATER-MANAGEMENT TRACT
MAINTAINED BY LEGEND LAKE ESTATES
HOMEOWNERS ASSOCIATION



TRACT D
WATER-MANAGEMENT TRACT
MAINTAINED BY LEGEND LAKE ESTATES
HOMEOWNERS ASSOCIATION



87-4
PET. [REDACTED]
ALLOC.#0001
COLLECT
5/2/2

0467-001
69/44

ATLANTIC - CARIBBEAN MAPPING, INC.
PROFESSIONAL LAND SURVEYORS
OAK RIDGE BUSINESS PARK
1860 OLD OKEECHOBEE ROAD, SUITE 33409
WEST PALM BEACH, FLORIDA 33409
(407) 581-8998 - FAX (407) 687-5897
9018 LEGEND LAKE ESTATES
RECORD PLAT

RTS/PRD

SUBDIVISION - LEGEND LAKE ESTATES
BOOK - 32 PAGE - 41
FLOOD ZONE - B FLOOD MAP - 175A
QUAD - 46 ZONING
SE
PID NAME - THE HUNT
ZIP CODE - 33467

TAZ-738