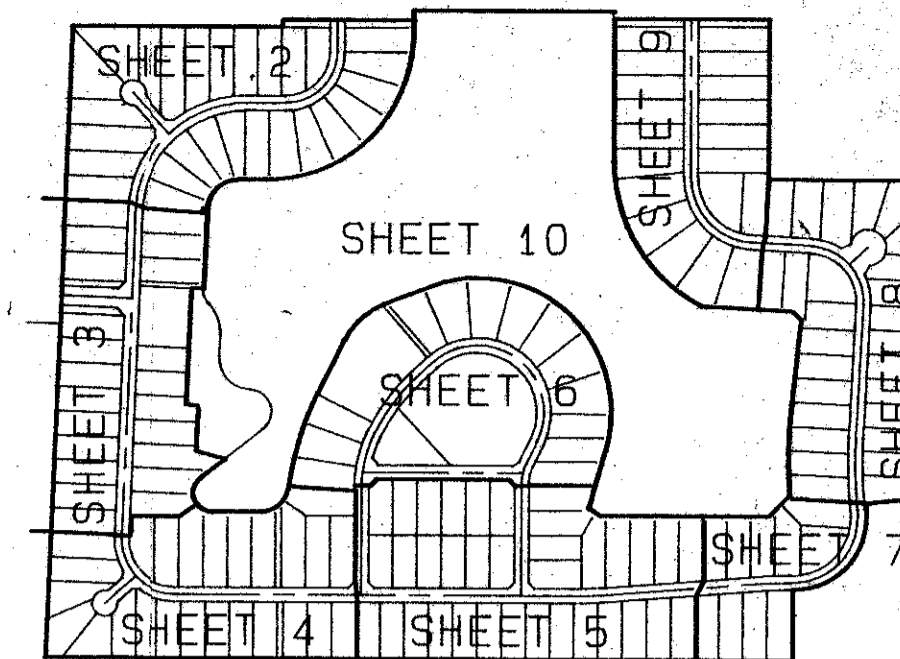


# LEGEND LAKE ESTATES

A REPLAT OF A PORTION OF "THE HUNT", P. U. D., PLAT BOOK 32, PAGES 119 THOUGH 125  
SITUATE IN SECTION 30 AND 31, TOWNSHIP 44 SOUTH, RANGE 42 EAST,  
PALM BEACH COUNTY, FLORIDA.

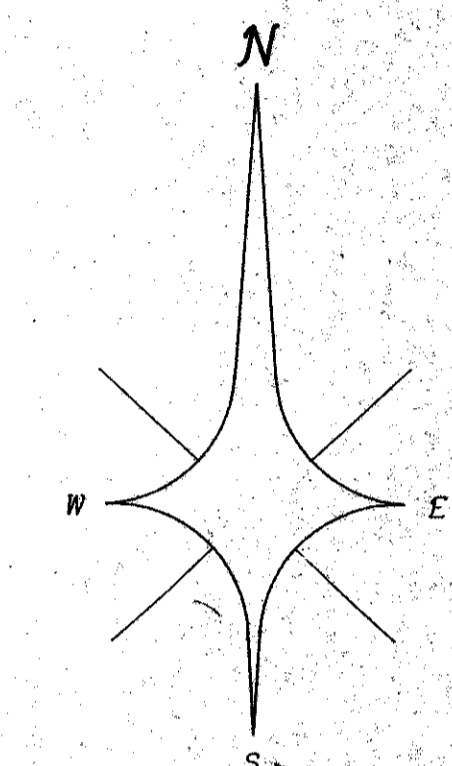
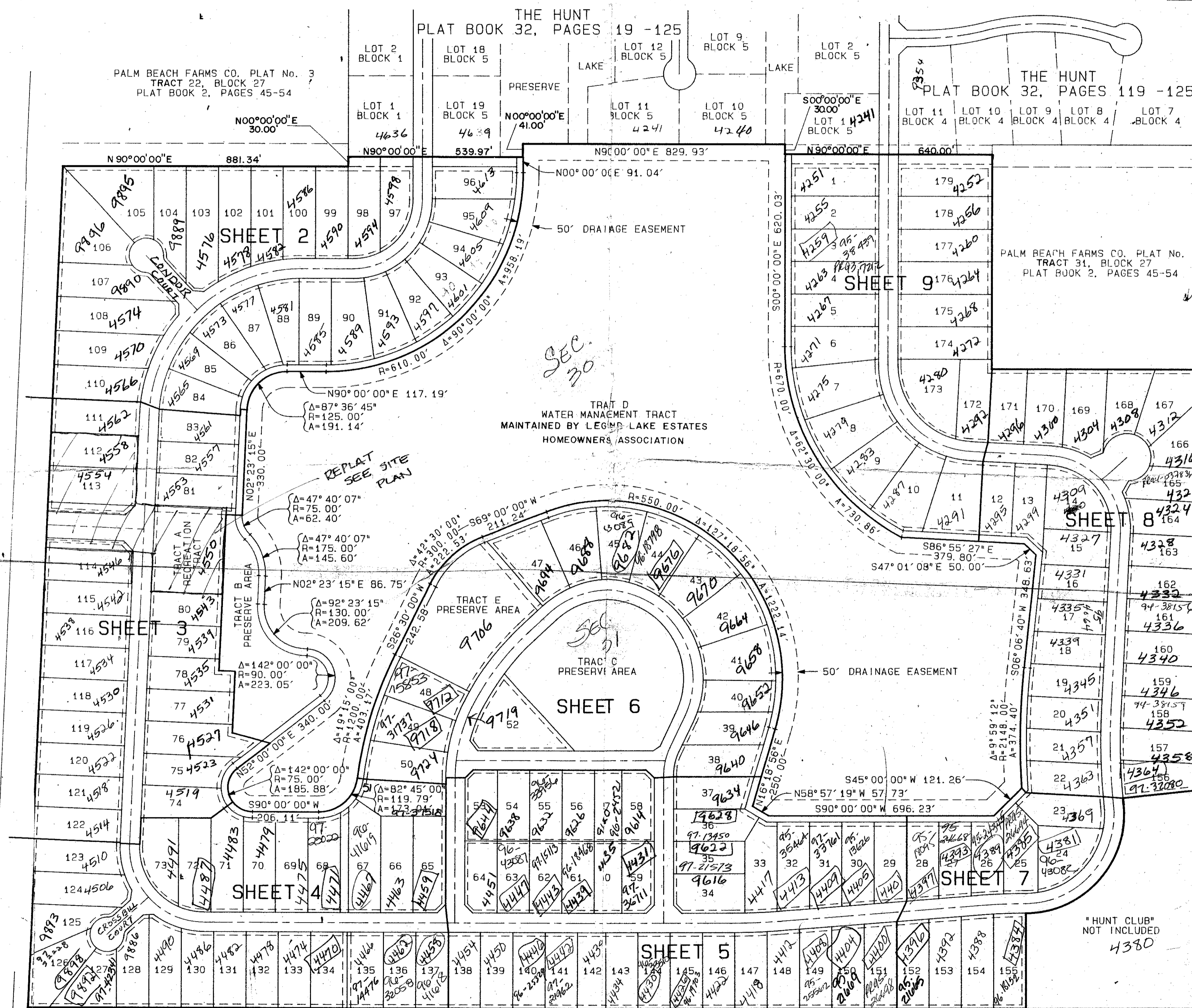
JANUARY, 1992

SHEET 10 OF 10



STATE OF FLORIDA  
COUNTY OF PALM BEACH } SS  
THIS PLAT WAS FILED FOR  
RECORD AT \_\_\_\_\_ DAY OF  
THIS \_\_\_\_\_ AD, 1992 AND  
DULY RECORDED IN PLAT BOOK  
ON PAGES \_\_\_\_\_ AND  
Milton T. Gower, CLERK  
CIRCUIT COURT  
BY: \_\_\_\_\_ DC

48



SCALE 1" = 200'

SUBDIVISION \* LEGEND LAKE ESTATES  
BOOK 69  
FLOOD ZONE B  
QUAD \* 48  
SE  
PLAT NAME THE HUNT

T&Z-730

87-4  
PET. [REDACTED]  
ALLOC. #0001  
COLLECT

0467-001  
69/48

ATLANTIC - CAPBREAN MAPPING, INC.  
PROFESSIONAL LAND SURVEYORS  
1860 OLD WOODBINE ROAD, SUITE 3340  
WEST PALM BEACH, FLORIDA 33409  
(407) 831-1111 FAX (407) 687-5897

RTS/PRD

90181

LEGEND LAKE ESTATES  
RECORD PLAT