

MISSION BAY - TRACT A

(A PART OF A P.U.D.)

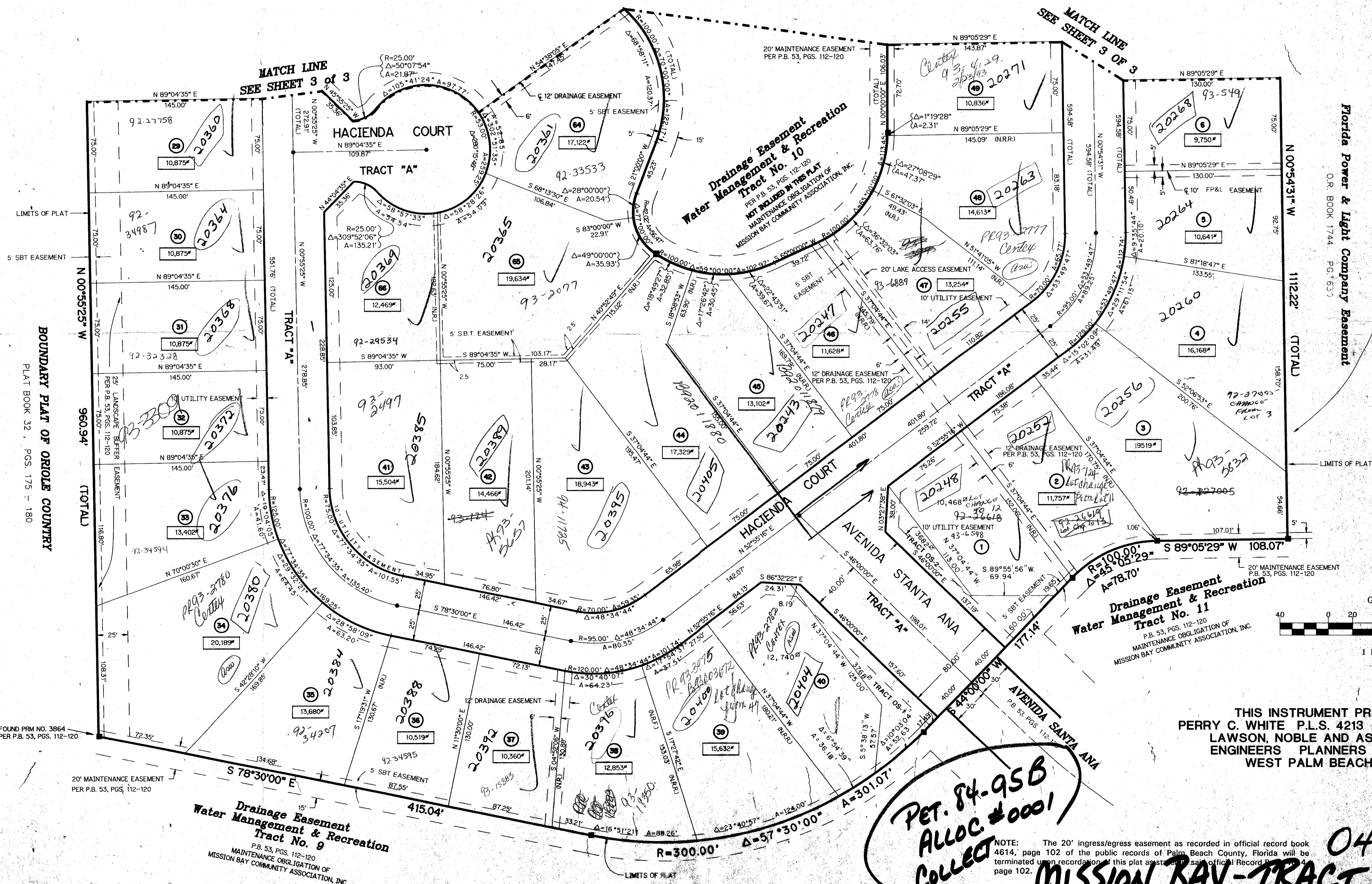
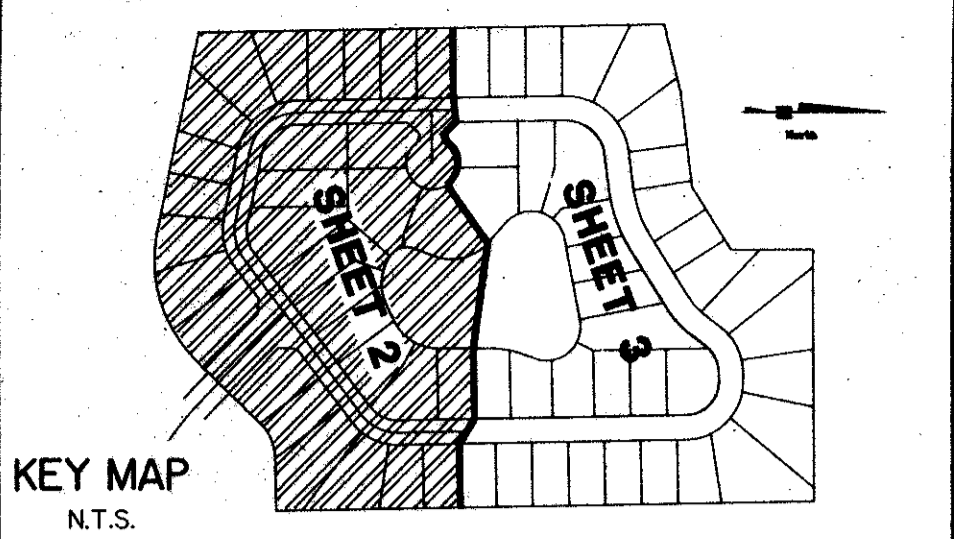
A REPLAT OF TRACT A OF THE PLAT OF MISSION BAY, A P.U.D.
AS RECORDED IN PLAT BOOK 53, PAGES 112-120 OF THE PUBLIC RECORDS OF
PALM BEACH COUNTY, FLORIDA, SECTION 14, TOWNSHIP 47 SOUTH, RANGE 41 EAST

SHEET 2 OF 3

FEBRUARY, 1992

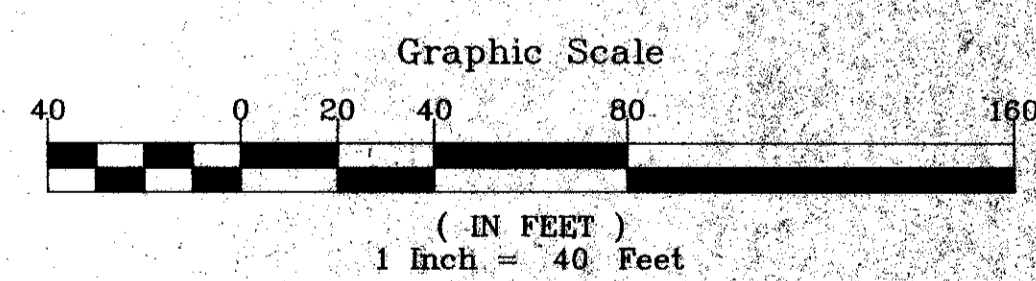
454-016

58



Florida Power & Light Company Easement
O.R. BOOK 1744 PG. 633

TRACT 0-1
P.B. 53, PGS. 112-120



THIS INSTRUMENT PREPARED BY
PERRY C. WHITE, P.L.S. 4213 STATE OF FLORIDA
LAWSON, NOBLE AND ASSOCIATES, INC.
ENGINEERS PLANNERS SURVEYORS
WEST PALM BEACH, FLORIDA

PET. 84-95B
ALLOC. #0001
COLLECT

NOTE: The 20' ingress/egress easement as recorded in official record book 4614, page 102 of the public records of Palm Beach County, Florida will be terminated upon recordation of this plat as stated in said official Record Book, page 102.

69/58
0454-016
MISSION BAY - TRACT A

SHEET 2 of 3

PAGE 58
FLOOD MAP # 100B
ZONING RE-ETS
ZIF CODE 33434
SUBDIVISION #
BOOK 67
FLOOD ZONE A-01
QUAD # 68
SE 84-95B
PUD NAME SANTA ANA

FOUND FROM NO. 3864
PER P.B. 53, PGS. 112-120

20' MAINTENANCE EASEMENT
PER P.B. 53, PGS. 112-120

Drainage Easement
Water Management & Recreation
Tract No. 9
P.B. 53, PGS. 112-120
MAINTENANCE OBLIGATION OF
MISSION BAY COMMUNITY ASSOCIATION, INC.

LIMITS OF PLAT

LIMITS OF PLAT

BOUNDARY PLAT OF ORIOLE COUNTRY
PLAT BOOK 32, PGS. 175 - 180

T&Z-777