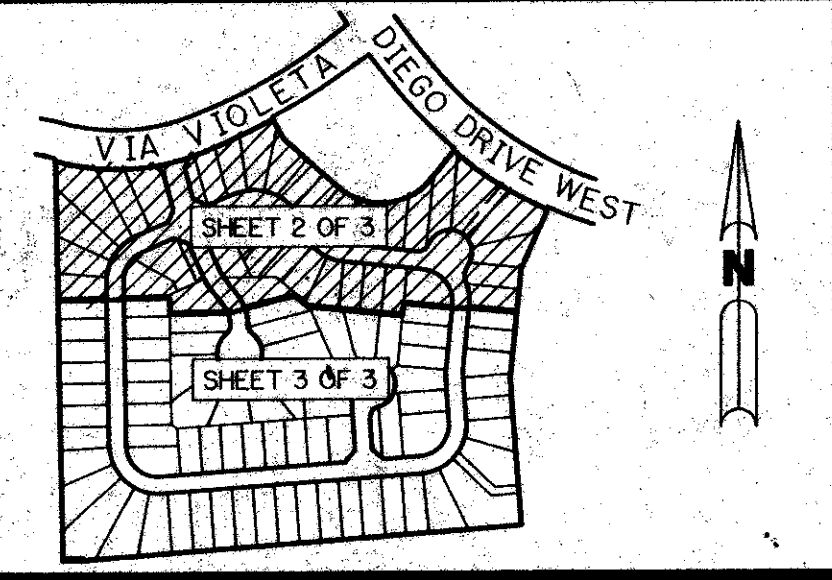


(A P.U.D.)

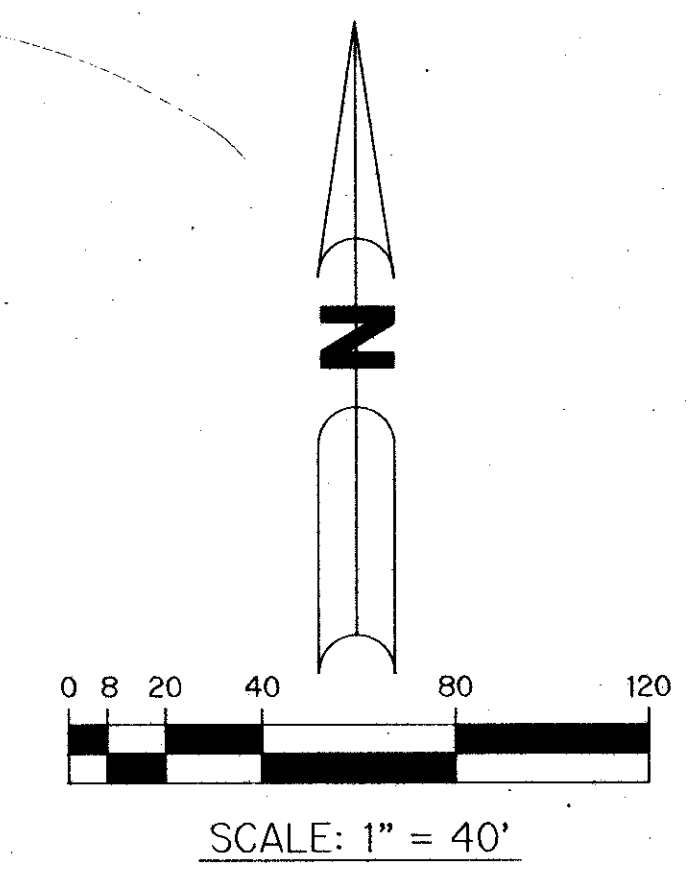
MISSION BAY - TRACT H - PHASE TWO

A REPLAT OF A PORTION OF TRACT "H" ACCORDING TO THE PLAT OF MISSION BAY P.U.D. AS RECORDED IN PLAT BOOK 53, PAGES 112 THROUGH 120, INCLUSIVE, OF THE PUBLIC RECORDS OF PALM BEACH COUNTY, FLORIDA. SECTIONS 13 AND 14, TOWNSHIP 47 SOUTH, RANGE 41 EAST SHEET 2 OF 3 MARCH, 1992

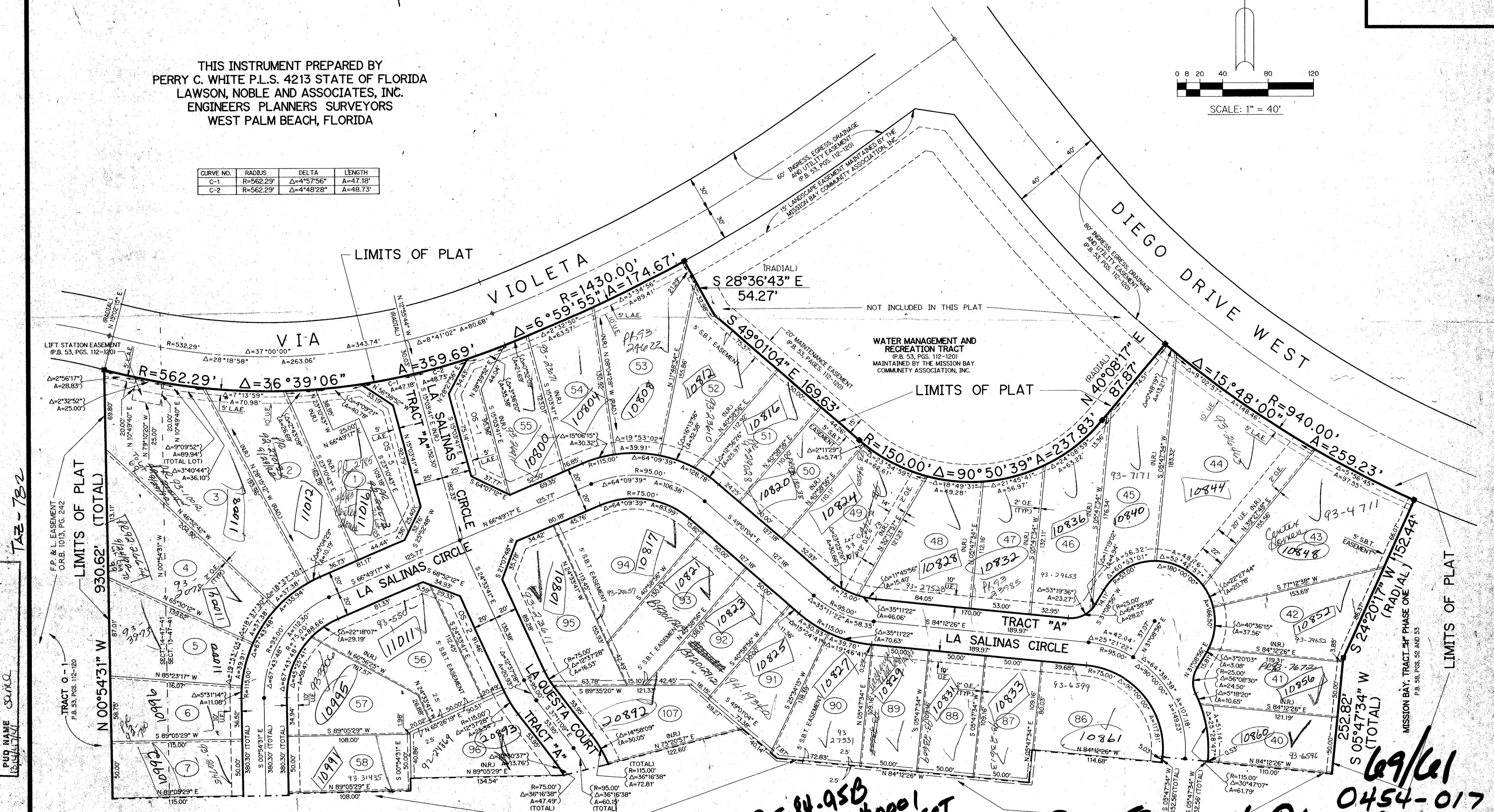


KEY MAP
N.T.S.

THIS INSTRUMENT PREPARED BY
PERRY C. WHITE P.L.S. 4213 STATE OF FLORIDA
LAWSON, NOBLE AND ASSOCIATES, INC.
ENGINEERS PLANNERS SURVEYORS
WEST PALM BEACH, FLORIDA



CURVE NO.	RADIUS	DELTA	LENGTH
C-1	R=562.29'	$\Delta=4^{\circ}57'56''$	A=47.18'
C-2	R=562.29'	$\Delta=4^{\circ}48'28''$	A=48.73'



T&Z-782

SUBDIVISION #1
 FLOOD MAP # 1003
 ZONING RT
 SE 84-95
 PUD NAME SAND
 ZIP CODE 33454

PET. 84-95B
 ALOC. #0001
 COLLECT
 MISSION BAY - TRACT H - PHASE 2
 SHEET 2 OF 3