

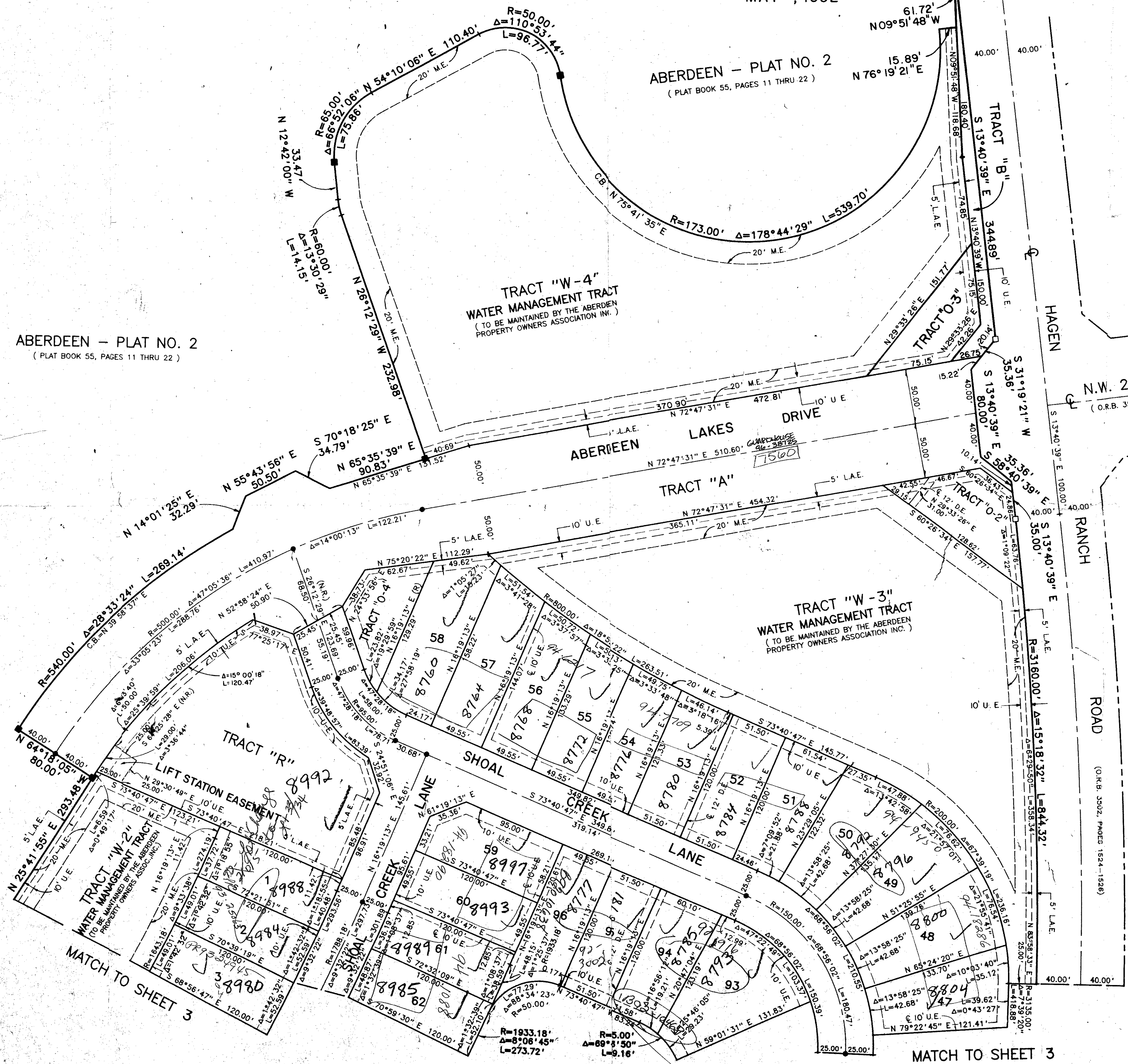
0270-017

66

# ABERDEEN - PLAT NO. 15

A PORTION OF A (P.U.D.)  
 LYING IN SECTION 16, TOWNSHIP 45 SOUTH, RANGE 42 EAST  
 BEING A REPLAT OF A PORTION OF ABERDEEN - PLAT NO. 2 AS RECORDED IN PLAT  
 BOOK 55, PAGES 11 THRU 22, PUBLIC RECORDS OF PALM BEACH COUNTY, FLORIDA.  
 SHEET 4 OF 4  
 MAY, 1992

STATE OF FLORIDA  
 COUNTY OF PALM BEACH  
 This Plat was filed for record at  
 M. this day of 19  
 and duly recorded in Plat Book No.  
 on Page  
 Milton T. Bauer, Clerk of the Circuit Court  
 By \_\_\_\_\_ D.C.



ABERDEEN - PLAT NO. 2  
 (PLAT BOOK 55, PAGES 11 THRU 22)

ABERDEEN - PLAT NO. 2  
 (PLAT BOOK 55, PAGES 11 THRU 22)

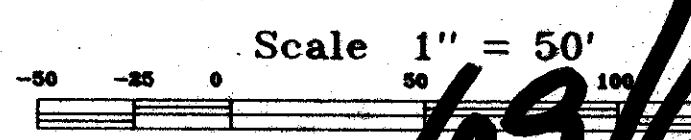
ABERDEEN-PLAT NO. 2  
 (PLAT BOOK 55, PAGES 11 THRU 22)

N.W. 22ND. AVENUE  
 (O.R.B. 3502, PAGES 1527-1528)

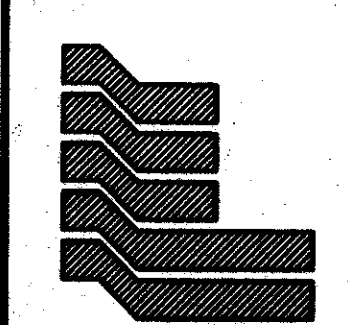
ABERDEEN-PLAT NO. 2  
 (PLAT BOOK 55, PAGES 11 THRU 22)

PET. 80-153  
 ALLOC. #0001  
 COLLECT

0270-017



SUBDIVISION - ABERDEEN PLAT 15  
 BOOK 69 PAGE 66  
 FLOOD ZONE B  
 QUAD #41  
 SE  
 PUB NAME  
 ZIP CODE 33437



Landmark Surveying & Mapping Inc.  
 1850 FOREST HILL BOULEVARD  
 PH. (407)433-5405 SUITE 100 - W.P.B. FLORIDA

ABERDEEN - PLAT NO. 15

PARCEL F