

PALMETTO MEDICAL PARK

A PLAT OF A PORTION OF SECTION 25, TOWNSHIP 47 SOUTH, RANGE 41 EAST
AND ALSO BEING A REPLAT OF A PORTION OF PARCEL A OF HOLIDAY CITY AT BOCA RATON AS
RECORDED IN PLAT BOOK 29, PAGE 192 OF THE PUBLIC RECORDS OF PALM BEACH COUNTY, FLORIDA
PALM BEACH COUNTY, FLORIDA

JOHN A. GRANT, JR., INC.

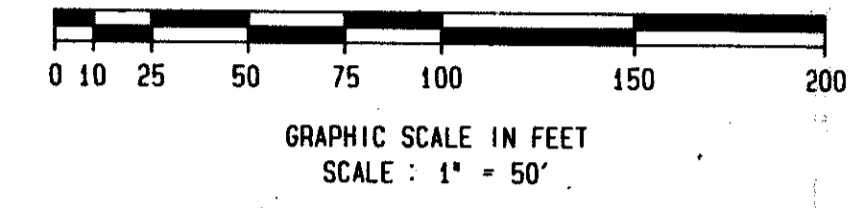
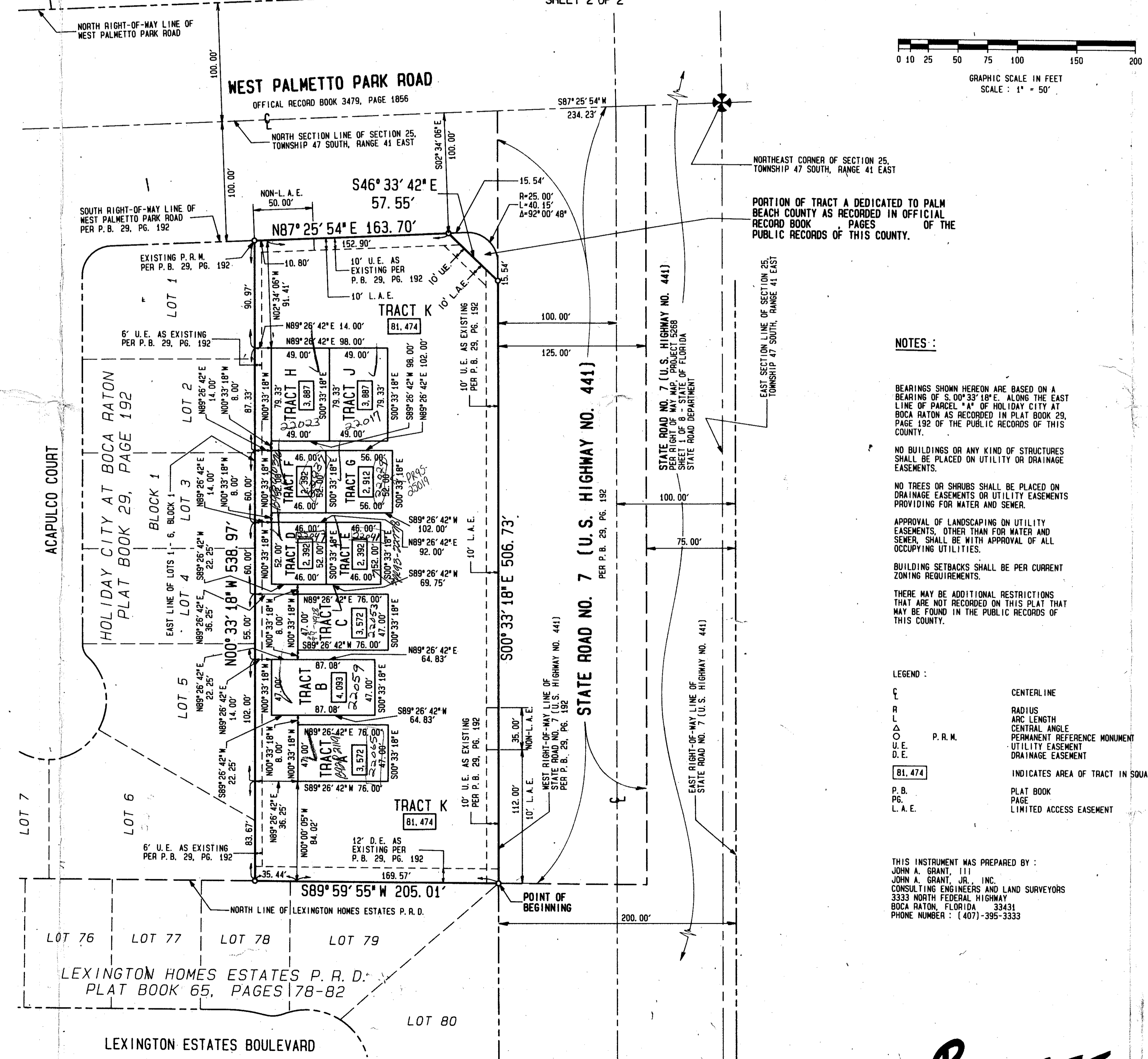
CONSULTING ENGINEERS AND LAND SURVEYORS

BOCA RATON, FLORIDA

FLORIDA FRUIT LAND COMPANY
SUBDIVISION NO. 2
PLAT BOOK 1, PAGE 102

WEST BOCA SQUARE
PLAT BOOK 66, PAGES 95-97

MARCH 1992
SHEET 2 OF 2



NOTES:

- BEARINGS SHOWN HEREON ARE BASED ON A BEARING OF S. 00° 33' 18" E. ALONG THE EAST LINE OF PARCEL "A" OF HOLIDAY CITY AT BOCA RATON AS RECORDED IN PLAT BOOK 29, PAGE 192 OF THE PUBLIC RECORDS OF THIS COUNTY.
- NO BUILDINGS OR ANY KIND OF STRUCTURES SHALL BE PLACED ON UTILITY OR DRAINAGE EASEMENTS.
- NO TREES OR SHRUBS SHALL BE PLACED ON DRAINAGE EASEMENTS OR UTILITY EASEMENTS PROVIDING FOR WATER AND SEWER.
- APPROVAL OF LANDSCAPING ON UTILITY EASEMENTS, OTHER THAN FOR WATER AND SEWER, SHALL BE WITH APPROVAL OF ALL OCCUPYING UTILITIES.
- BUILDING SETBACKS SHALL BE PER CURRENT ZONING REQUIREMENTS.
- THERE MAY BE ADDITIONAL RESTRICTIONS THAT ARE NOT RECORDED ON THIS PLAT THAT MAY BE FOUND IN THE PUBLIC RECORDS OF THIS COUNTY.

LEGEND:

- F CENTERLINE
- R RADIUS
- L ARC LENGTH
- Δ CENTRAL ANGLE
- P.R.M.
- PERMANENT REFERENCE MONUMENT
- U.E. UTILITY EASEMENT
- D.E. DRAINAGE EASEMENT
- 81.474 INDICATES AREA OF TRACT IN SQUARE FEET
- P.B. PLAT BOOK
- P.G. PAGE
- L.A.E. LIMITED ACCESS EASEMENT

THIS INSTRUMENT WAS PREPARED BY:
JOHN A. GRANT, III
JOHN A. GRANT, JR., INC.
CONSULTING ENGINEERS AND LAND SURVEYORS
3333 NORTH FEDERAL HIGHWAY
BOCA RATON, FLORIDA 33431
PHONE NUMBER: (407)-395-3333

*PET. 91-54
COLLECT*

0478-002

PALMETTO MEDICAL PARK 69/80

SUBDIVISION *
BOOK CA
PAGE 8
FLOOD MAP *
FLOOD ZONE
ZONING RS L9/56
ROAD # 1
SE 91-54
PUB MAP #

TAZ = 7B1