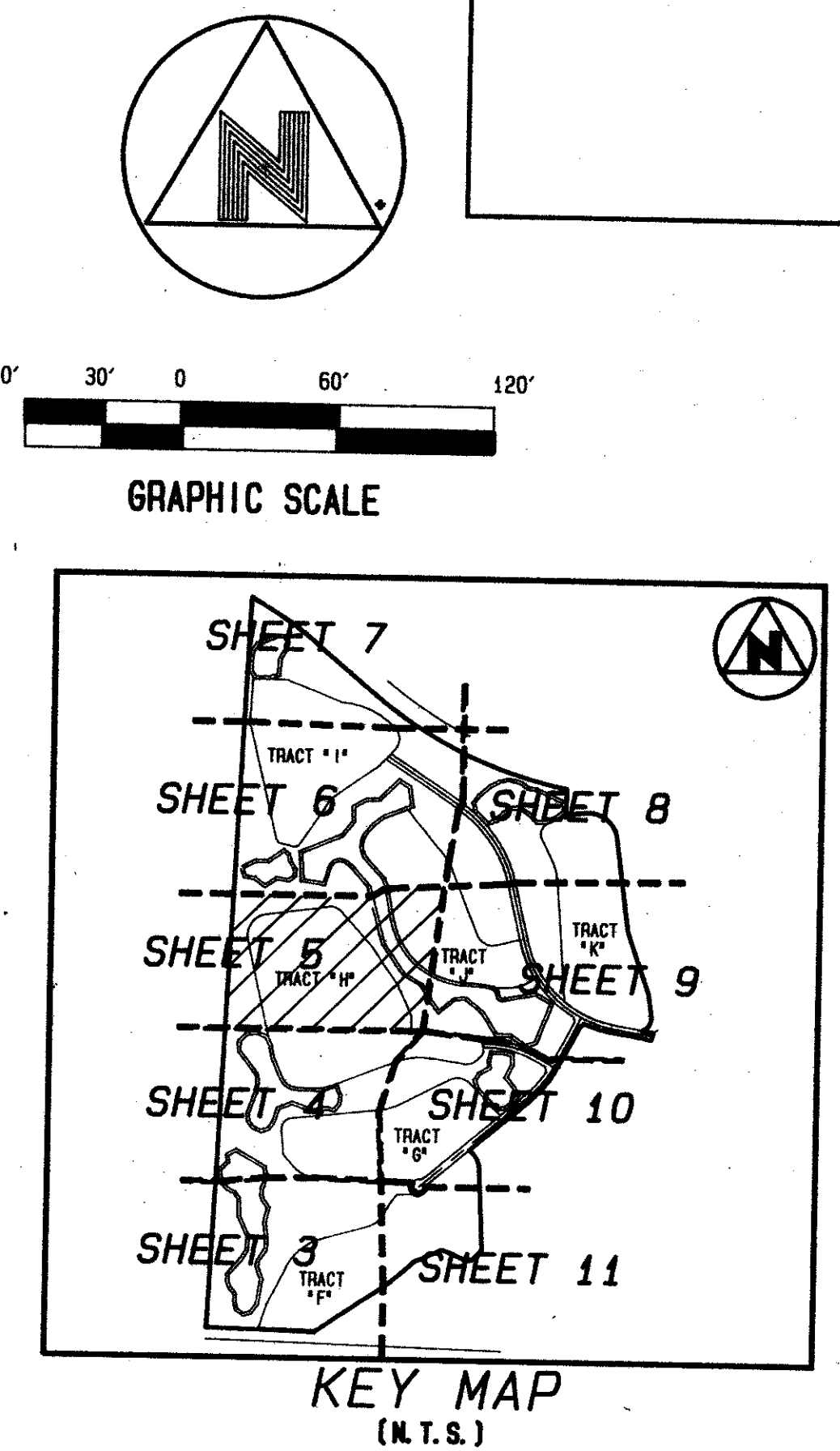
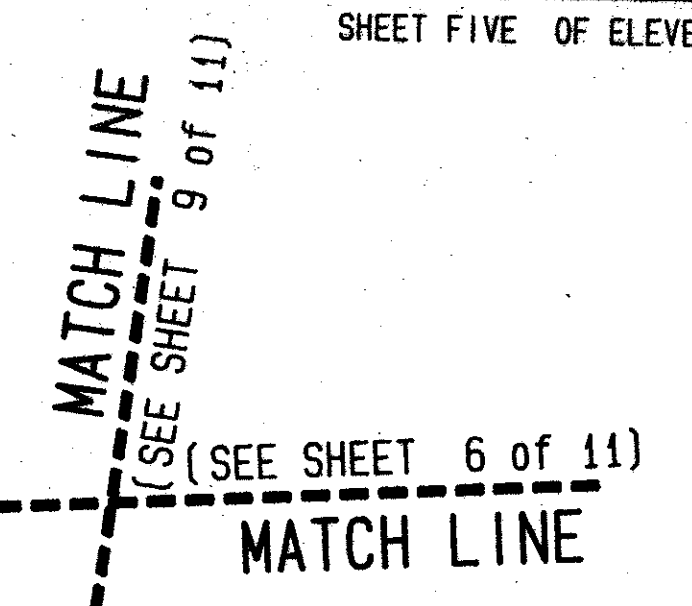
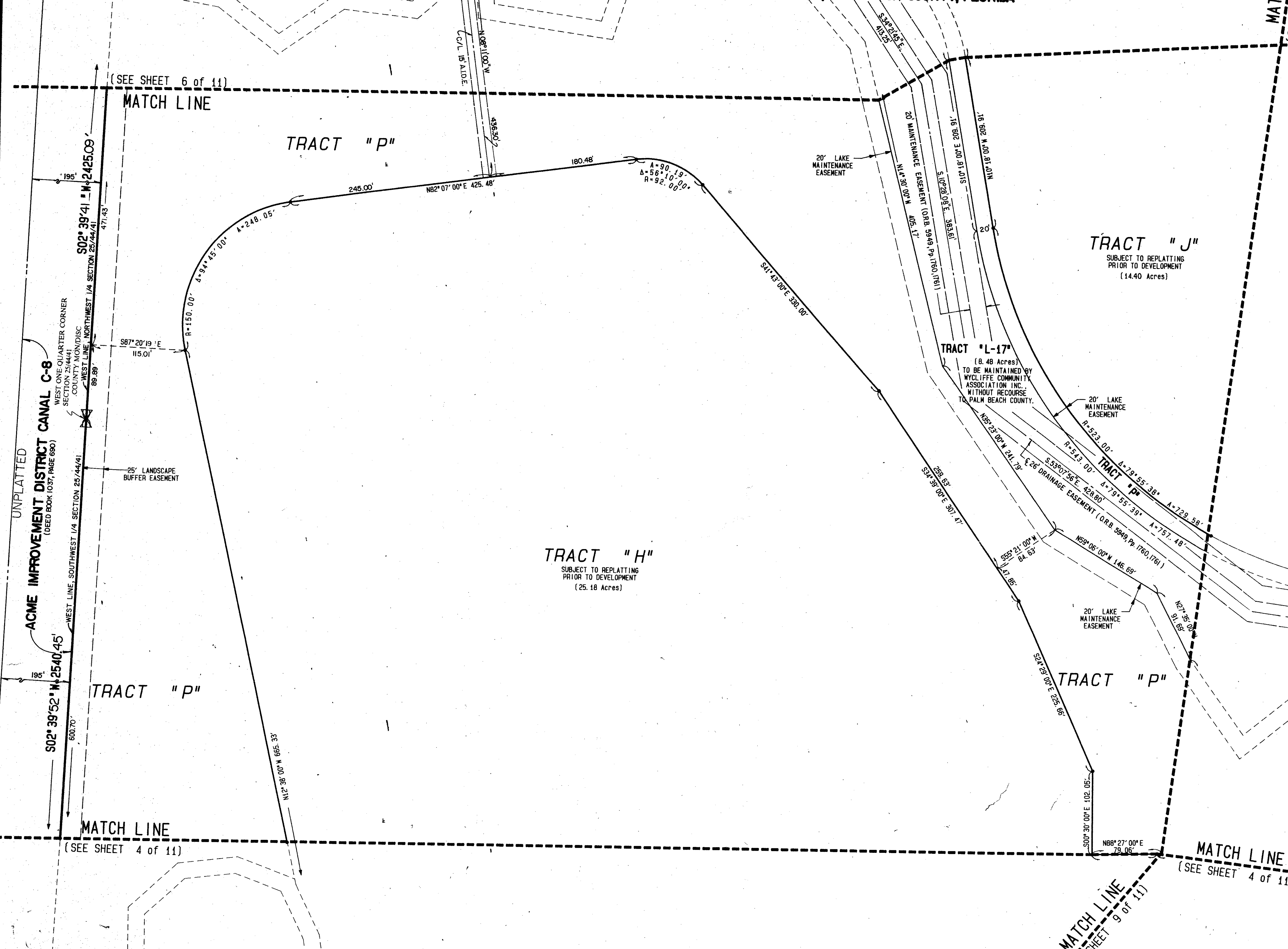


- Wycliffe Plat Three -

LYING IN SECTION 25, TOWNSHIP 44 SOUTH, RANGE 41 EAST, PALM BEACH COUNTY, FLORIDA



LEGEND:

A.I.D.E.	INDICATES ACME IMPROVEMENT DISTRICT EASEMENT
C/L	INDICATES CENTERLINE
O.R.B.	INDICATES OFFICIAL RECORDS BOOK
P.C.P.	INDICATES A PERMANENT CONTROL POINT
Pg.	INDICATES PAGE
Pp.	INDICATES PAGE THROUGH PAGE
P.R.M.	INDICATES PERMANENT REFERENCE MONUMENT
R/W	INDICATES RIGHT OF WAY
SEC.	INDICATES SECTION
MON.	INDICATES MONUMENT
P.B.	INDICATES PLAT BOOK

FLOOD ZONE B
 FLOOD MAP # 10513
 QUAD # 43
 ZONING # TS
 SE 20-104
 ZIP CODE 33467
 PUD MAP # 25/44/41
 SAME

T&Z = 736

69/138

THIS INSTRUMENT WAS PREPARED BY WILLIAM R. VAN CAMPEN, R.L.S., IN AND FOR THE OFFICES OF BENCH MARK LAND SURVEYING & MAPPING, INC., 4152 WEST BLUE HERON BOULEVARD, SUITE 121, RIVIERA BEACH, FLORIDA

BENCH MARK LAND SURVEYING & MAPPING, INC.
 RIVIERA BEACH, FLORIDA WEST PALM BEACH, FLORIDA
 (707) 842-1111 (561) 793-9234

Record Plat
Wycliffe Plat Three

DRAWN: [] CHECKED: K.S. DATE: []
 SCALE: 1" = 60' (1:360) FILE: W-43 (1:360) P-5600 5 of 11

0520-009