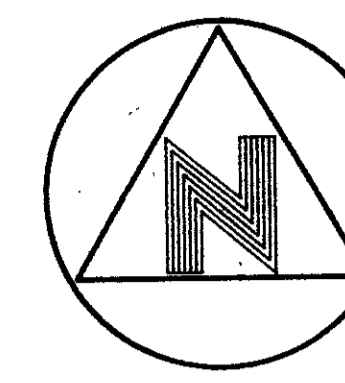


# Wycliffe Plat Three

LYING IN SECTION 25, TOWNSHIP 44 SOUTH, RANGE 41 EAST, PALM BEACH COUNTY, FLORIDA

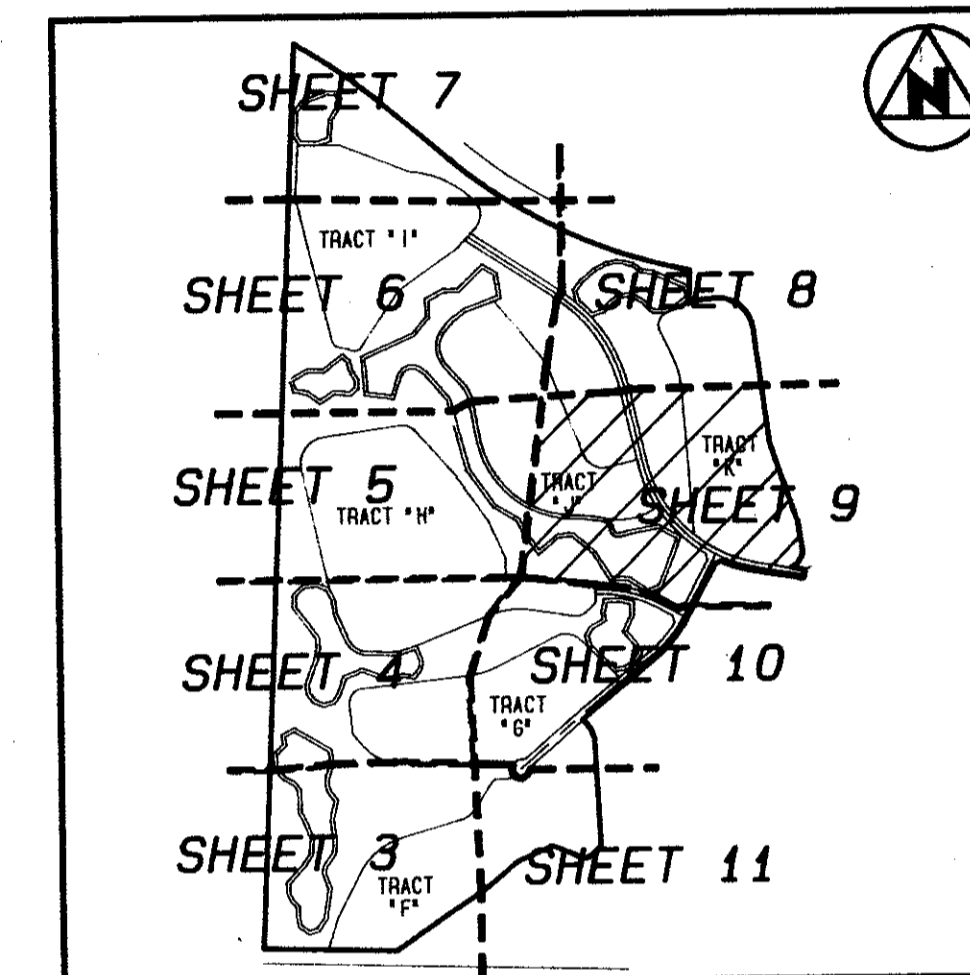
MATCH LINE  
(SEE SHEET 8 of 11)



60' 30' 0 60' 120'

GRAPHIC SCALE

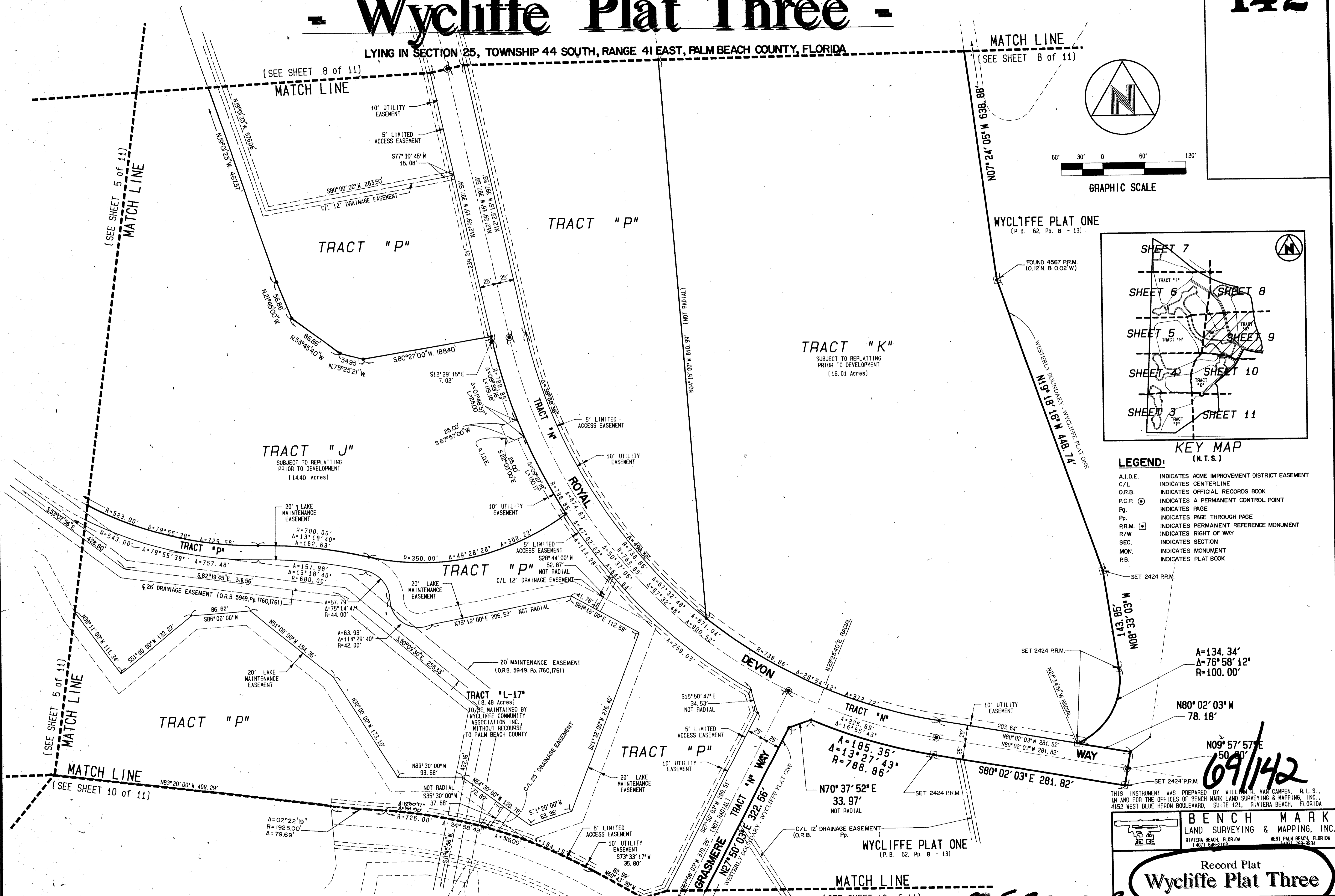
WYCLIFFE PLAT ONE  
(P.B. 62, Pp. 8 - 13)



KEY MAP  
(N.T.S.)

LEGEND:

- A.I.D.E. INDICATES ACME IMPROVEMENT DISTRICT EASEMENT
- C/L INDICATES CENTERLINE
- O.R.B. INDICATES OFFICIAL RECORDS BOOK
- P.C.P. INDICATES A PERMANENT CONTROL POINT
- Pp. INDICATES PAGE
- Pp. INDICATES PAGE THROUGH PAGE
- P.R.M. INDICATES PERMANENT REFERENCE MONUMENT
- R/W INDICATES RIGHT OF WAY
- SEC. INDICATES SECTION
- MON. INDICATES MONUMENT
- P.B. INDICATES PLAT BOOK



69/142

THIS INSTRUMENT WAS PREPARED BY WILLIAM R. VAN CAMPEN, R.L.S., IN AND FOR THE OFFICES OF BENCH MARK LAND SURVEYING & MAPPING, INC., 4152 WEST BLUE HERON BOULEVARD, SUITE 121, RIVIERA BEACH, FLORIDA

**BENCH MARK**  
LAND SURVEYING & MAPPING, INC.  
RIVIERA BEACH, FLORIDA  
WEST PALM BEACH, FLORIDA  
(407) 848-2107 (407) 848-2824

Record Plat  
**Wycliffe Plat Three**

Checked: K.S. Date: \_\_\_\_\_ Scale: 1" = 60'

BOOK 69  
FLOOD ZONE B  
ZONING RTS  
QUID # 63  
SE 86-104  
PUB. 25/10/14  
same

0520-009