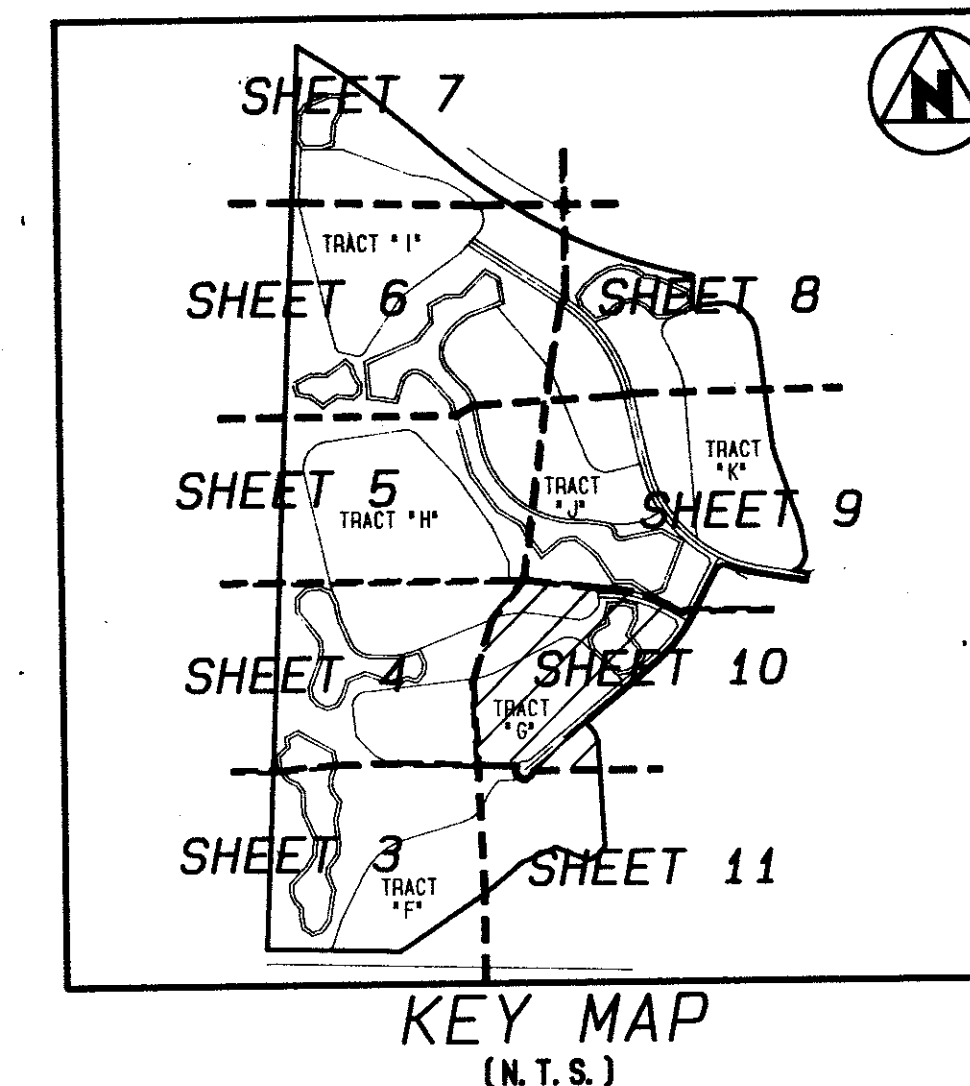
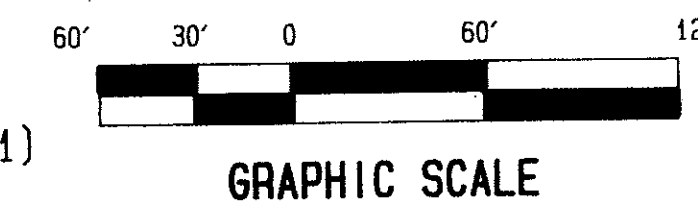
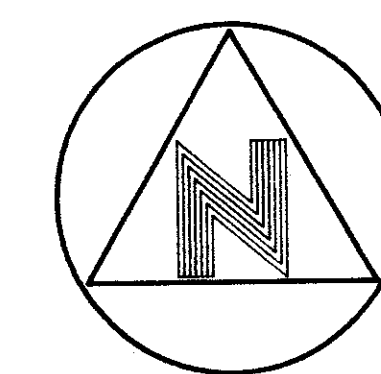


- Wycliffe Plat Three -

143

LYING IN SECTION 25, TOWNSHIP 44 SOUTH, RANGE 41 EAST, PALM BEACH COUNTY, FLORIDA



(SEE SHEET 9 of 11)
MATCH LINE

(SEE SHEET 4 of 11)
MATCH LINE

(SEE SHEET 9 of 11)
MATCH LINE

(SEE SHEET 4 of 11)
MATCH LINE

(SEE SHEET 11 of 11)
MATCH LINE

TRACT "H"
SUBJECT TO REPLATTING
PRIOR TO DEVELOPMENT
(25.18 Acres)

TRACT "P"

TRACT "G"
SUBJECT TO REPLATTING
PRIOR TO DEVELOPMENT
(15.26 Acres)

TRACT "F"
SUBJECT TO REPLATTING
PRIOR TO DEVELOPMENT
(17.42 Acres)

TRACT "L-18"
(1.34 Acres)
TO BE MAINTAINED BY
WYCLIFFE COMMUNITY
ASSOCIATION INC.,
WITHOUT RECOURSE
TO PALM BEACH COUNTY.

GRASMERE WAY
N49°59'33"E 513.16'

WYCLIFFE PLAT ONE
(P.B. 62, Pp. 8 - 13)

LEGEND:

- A.I.D.E. INDICATES ACME IMPROVEMENT DISTRICT EASEMENT
- C/L INDICATES CENTERLINE
- O.R.B. INDICATES OFFICIAL RECORDS BOOK
- P.C.P. INDICATES A PERMANENT CONTROL POINT
- Pg. INDICATES PAGE
- Pp. INDICATES PAGE THROUGH PAGE
- P.R.M. INDICATES PERMANENT REFERENCE MONUMENT
- R/W INDICATES RIGHT OF WAY
- SEC. INDICATES SECTION
- MON. INDICATES MONUMENT
- P.B. INDICATES PLAT BOOK

BOOK 69
FLOOD ZONE B
QUAD C-63
SE 86-104
PLD NAME SAME
AZ-111111

T&Z=7366

69/143

THIS INSTRUMENT WAS PREPARED BY WILLIAM R. VAN CAMPEN, R.L.S., IN AND FOR THE OFFICES OF BENCH MARK LAND SURVEYING & MAPPING, INC., 4152 WEST BLUE HERON BOULEVARD, SUITE 121, RIVIERA BEACH, FLORIDA

BENCH MARK
LAND SURVEYING & MAPPING, INC.
RIVIERA BEACH, FLORIDA WEST PALM BEACH, FLORIDA
(407) 243-1111 (407) 783-9234

Record Plat
Wycliffe Plat Three

0520-009

DRAWN: DJM	CHECKED: K.S.	DATE:	SHEET
SCALE: 1" = 60'	CADD FILE: W2-110	N.O. #: P-0500	10 of 11