

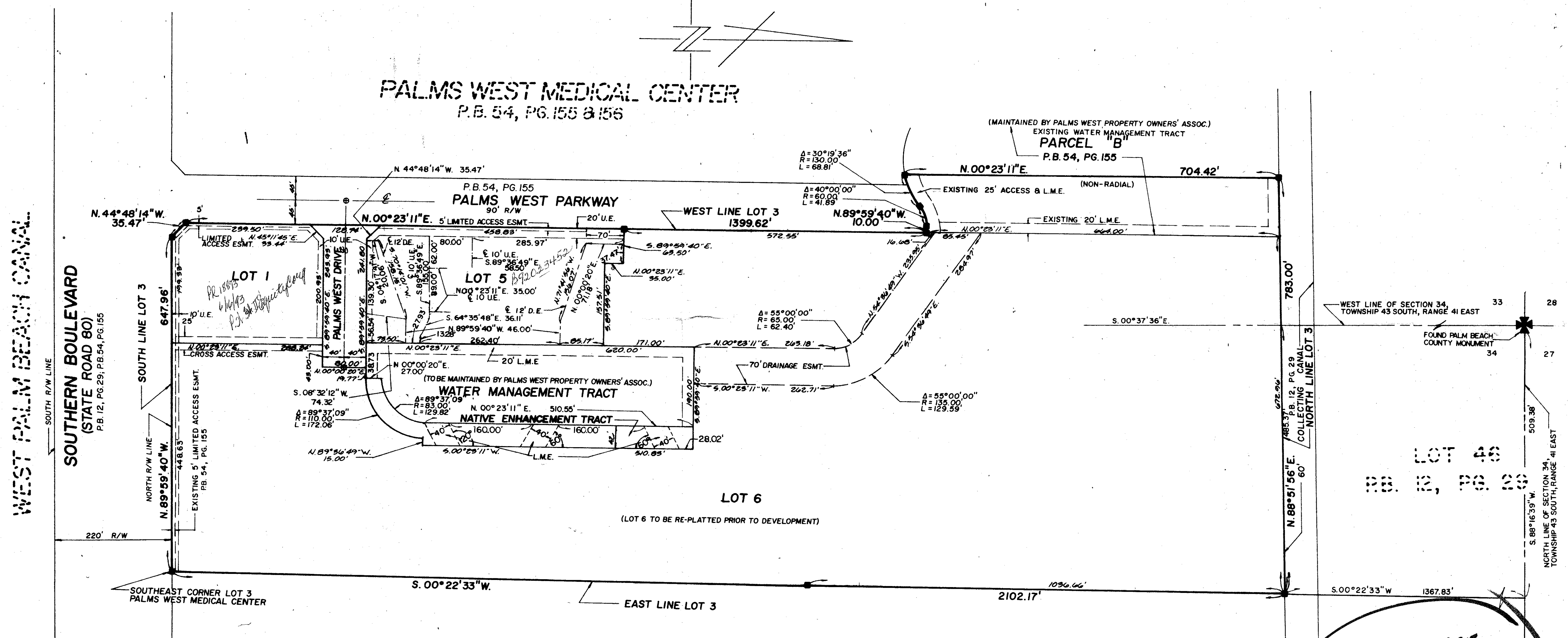
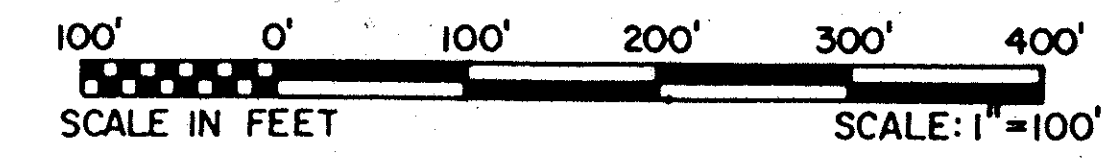
PALMS WEST MEDICAL OFFICE COMPLEX

BEING A REPLAT OF LOT 3 AND A PART OF PARCEL B, PALMS WEST MEDICAL CENTER, RECORDED IN PLAT BOOK 54, PAGES 155 & 156, OF THE PUBLIC RECORDS OF PALM BEACH COUNTY, FLORIDA

IN PART OF SECTIONS 33 AND 34, TOWNSHIP 43 SOUTH, RANGE 41 EAST
PALM BEACH COUNTY, FLORIDA
IN TWO SHEETS SHEET NO.2

LEGEND

- CL = Centerline
- L.M.E. = Lake Maintenance Easement
- D.E. = Drainage Easement
- U.E. = Utility Easement
- P.R.M. = Permanent Reference Monument
- P.C.P. = Permanent Control Point
- Easement = Easement
- Assoc. = Association
- P.B. = Plat Book
- Pg. = Page
- R/W = Right-of-Way
- Δ = Delta
- R = Radius
- L = Arc Length



LOT 1, BLOCK "K"
REPLAT OF LOXAHATCHEE DISTRICT SUBDIVISION
PLAT BOOK 12, PAGE 29

IMPACT FEE
 PET. 84-54 D
 COLLECT

0471-091
69/150

PALMS WEST MEDICAL OFFICE COMPLEX

TAZ = B10

150
 FLOOD MAP # 05013
 ZONING CSH
 61476
 SAME
 33/4/23/11