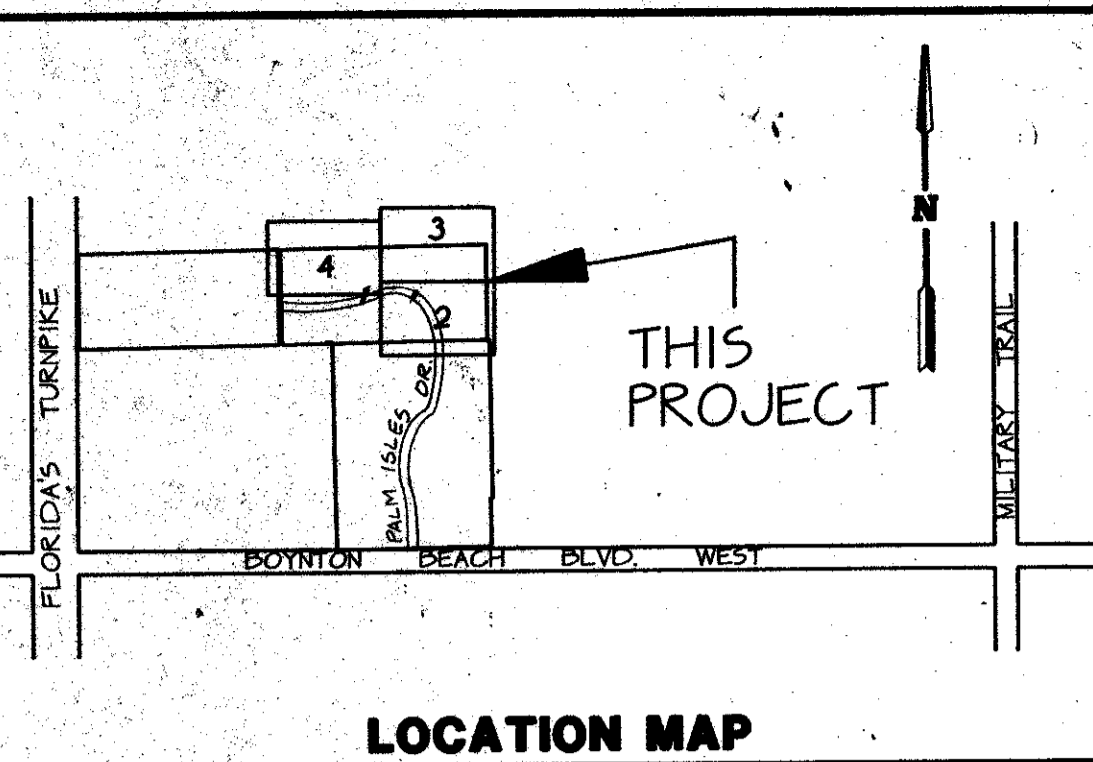


# PALM ISLES II-A, A P.U.D.

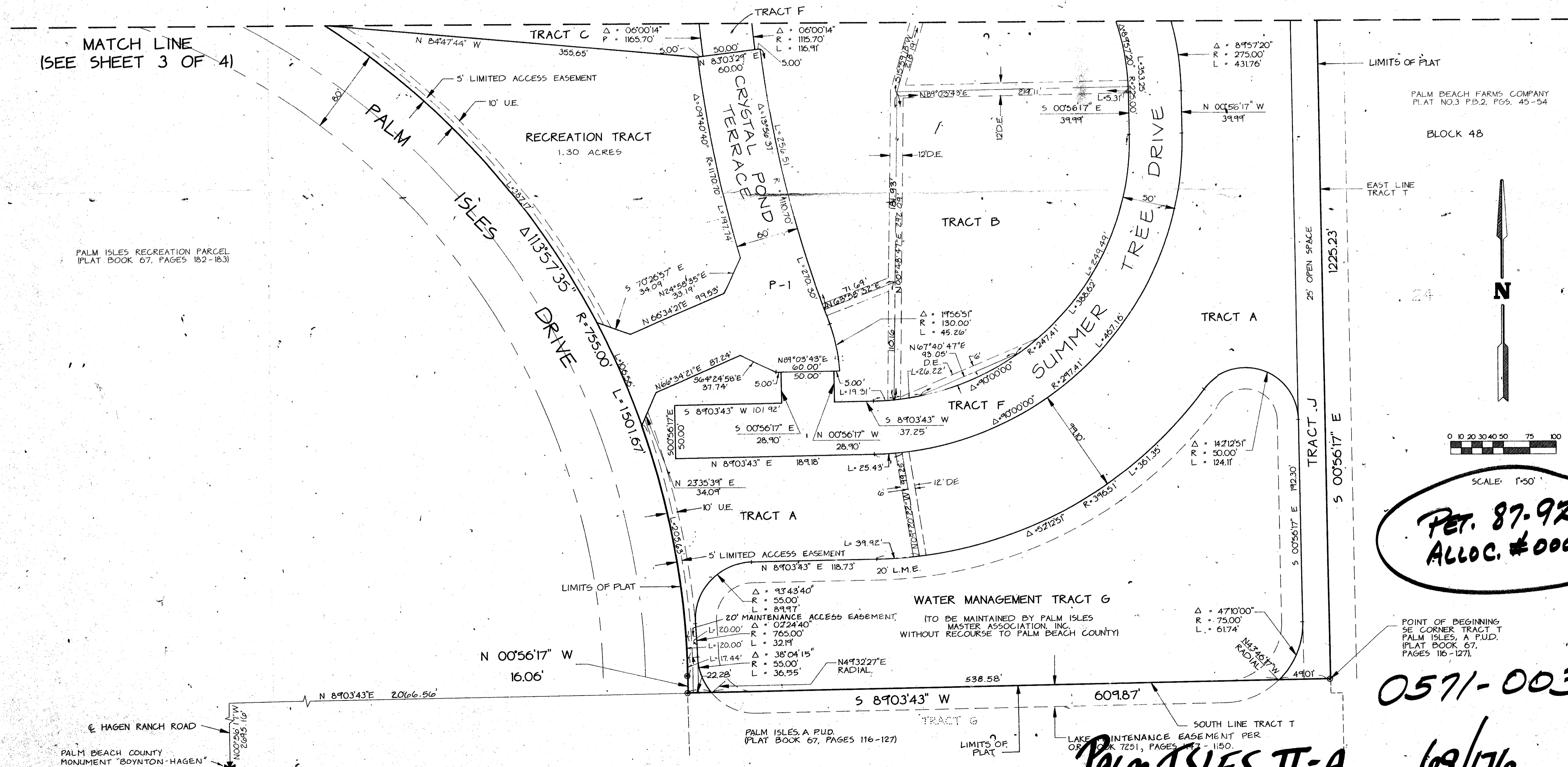
A REPLAT OF A PORTION OF TRACT T OF PALM ISLES, A P.U.D.  
 AS RECORDED IN PLAT BOOK 67, PAGES 116 THROUGH 127 INCLUSIVE OF THE PUBLIC RECORDS OF PALM BEACH COUNTY, FLORIDA  
 IN SECTION 21, TOWNSHIP 42 SOUTH, RANGE 45 EAST, PALM BEACH COUNTY, FLORIDA

THIS INSTRUMENT PREPARED BY JAMES E. PARK, P.L.S.  
 WILLIAMS, HATFIELD & STONER, INC. - ENGINEERS PLANNERS SURVEYORS  
 1325 SOUTH CONGRESS AVENUE, SUITE 118, BOYNTON BEACH, FLORIDA 33426

SHEET 2 OF 4



MATCH LINE  
 (SEE SHEET 3 OF 4)



PALM ISLES RECREATION PARCEL  
 (PLAT BOOK 67, PAGES 182-183)

SUBDIVISION \* PALM ISLES, II-A  
 BOOK (S) PAGE 176  
 FLOOD MAP # 1854  
 ZONING KS  
 QUAD # 50  
 ZIP CODE 33437  
 CF  
 PUD NAME S.A.M.C.  
 2/45/02

PET. 87-92  
 ALLOC. #0001

0571-003

PALM ISLES II-A  
 69/176