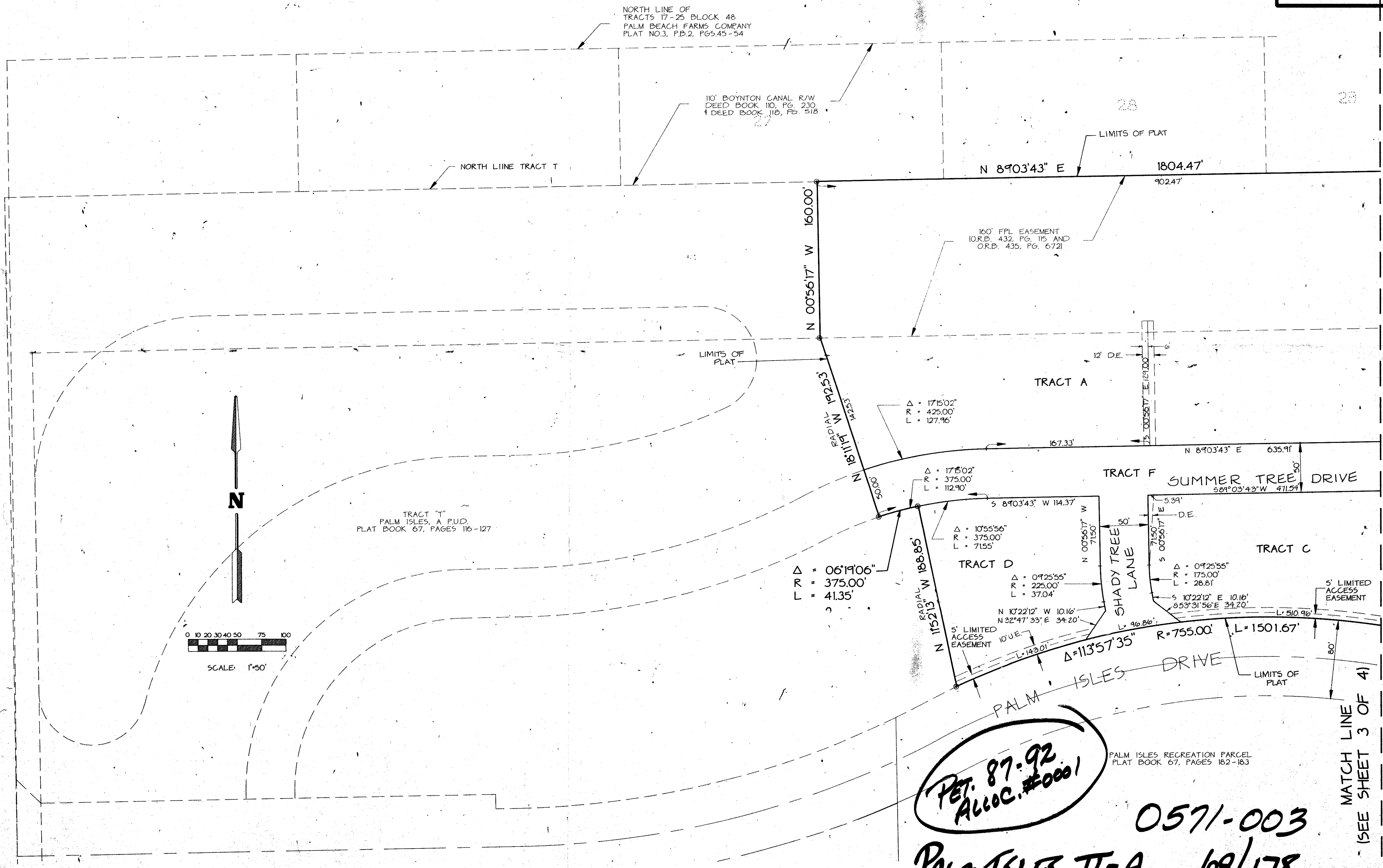
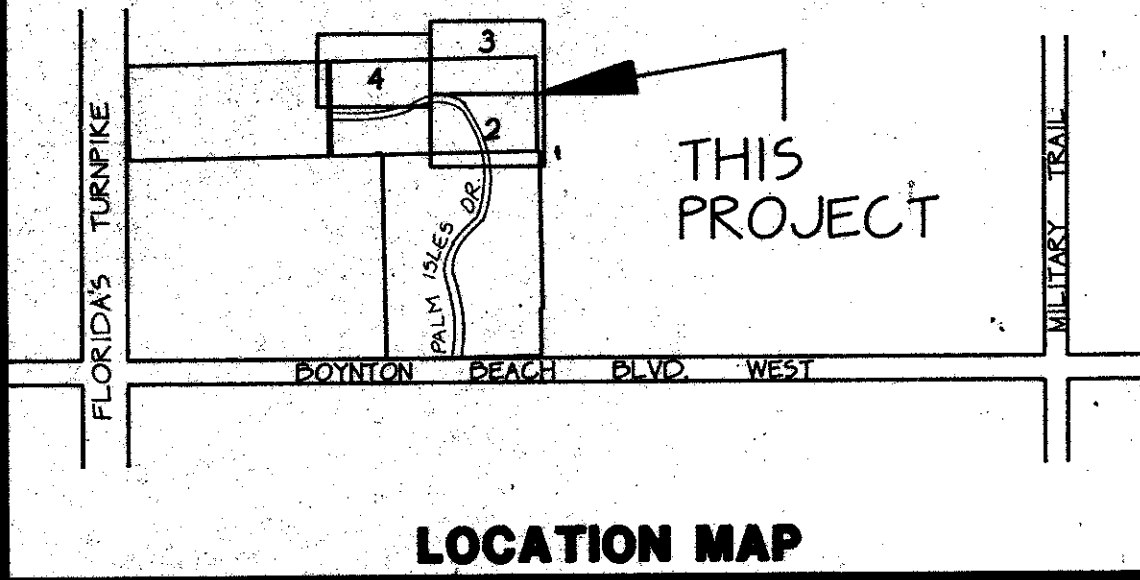


PALM ISLES II-A, A P.U.D.

A REPLAT OF A PORTION OF TRACT T OF PALM ISLES, A P.U.D.
AS RECORDED IN PLAT BOOK 67, PAGES 116 THROUGH 127 INCLUSIVE OF THE PUBLIC RECORDS OF PALM BEACH COUNTY, FLORIDA
IN SECTION 21, TOWNSHIP 42 SOUTH, RANGE 45 EAST, PALM BEACH COUNTY, FLORIDA

THIS INSTRUMENT PREPARED BY JAMES E. PARK, P.L.S.
WILLIAMS, HATFIELD & STONER, INC. - ENGINEERS PLANNERS SURVEYORS
1325 SOUTH CONGRESS AVENUE, SUITE 118, BOYNTON BEACH, FLORIDA 33426

SHEET 4 OF 4



PET. 87-92
ALLOC. #0001

0571-003
PALM ISLES II-A 69/178

MATCH LINE
- (SEE SHEET 3 OF 4)

SUBDIVISION - PALM ISLES II-A
BOOK (A) PAGE 178
FLOOD MAP #185A
FLOOD ZONE B ZONING RS
QUAD #50 ZIP CODE 33437
SE
PUD NAME SCMC
2/15/12