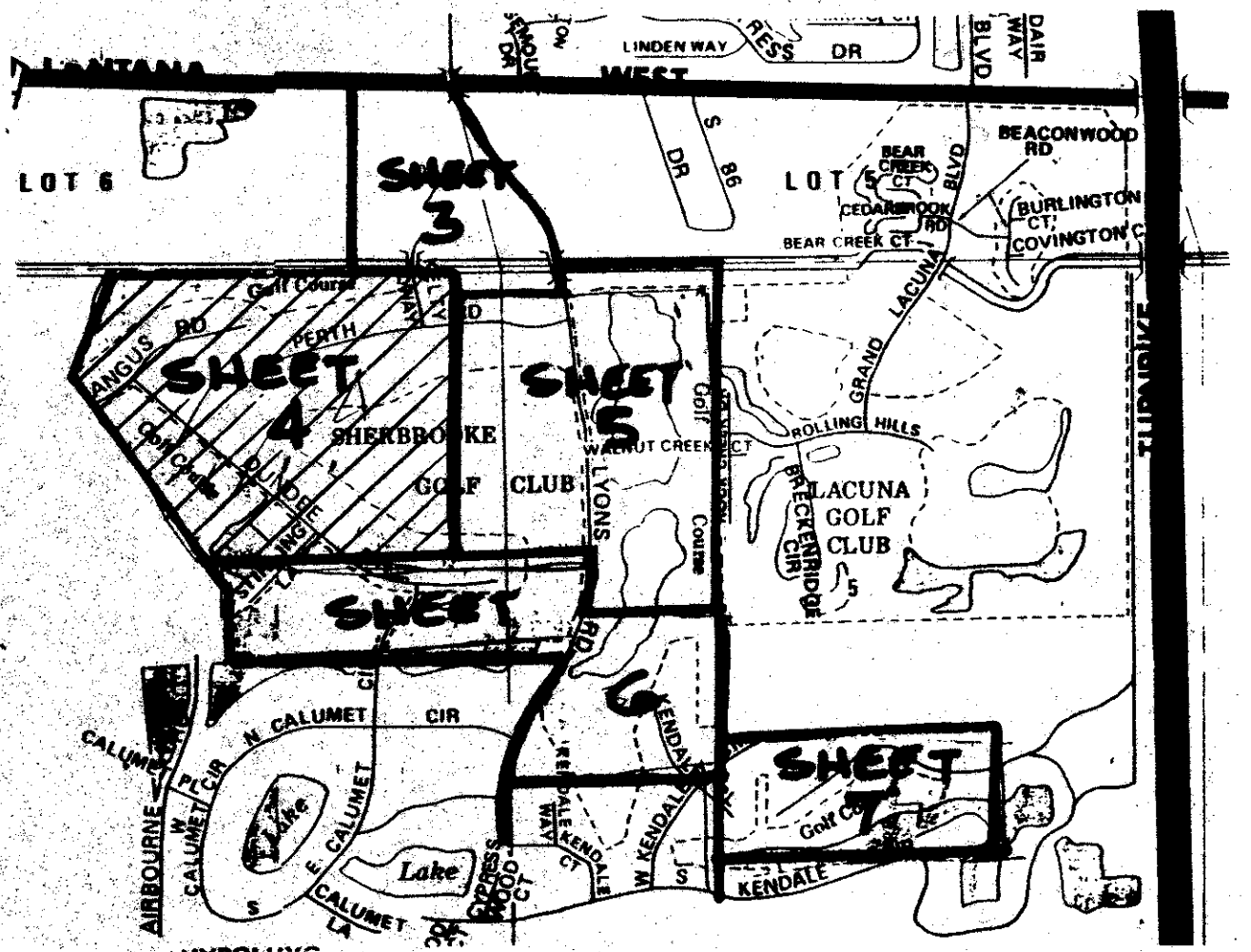


REVISED SEPT. 3, 1992



Sherbrooke

GOLF & COUNTRY CLUB
(P.U.D.)

PALM BEACH COUNTY, FLORIDA
PART OF TRACT 42, T44 1/2S, R42E
PART OF SECTIONS 5 & 6, T45S, R42E
REPLAT OF PART OF TRACTS 1 THRU 4, 13, 15 THRU 20, & 30 THRU 32, BLOCK 36; TRACTS 13 THRU 16, 17 THRU 20, 45 THRU 52, 75 THRU 80, 82 THRU 90, & 103 THRU 110, BLOCK 37, PALM BEACH FARMS COMPANY PLAT 3, PLAT BOOK 2, PAGE 45
REPLAT OF PART OF LOT 1, BLOCK 42, PALM BEACH FARMS COMPANY PLAT 13, PLAT BOOK 6, PAGE 99.

SHEET NO. 4 OF 7 SHEETS

SUBDIVISION Sherbrooke Golf & Country Club
BOOK 69 PAGE 189
FLOOD ZONE B FLOOD MAP # 170A
QUAD #49 ZONING RE
SE
PUD NAME same
5474573
TAE=741

SHERBROOKE GOLF & COUNTRY CLUB

0309-010

69/189
ROBERT A. H. INC.
LAND SURVEYORS
3295 B LAKE WORTH RD
LAKE WORTH, FLORIDA 33461
PHONE (407) 585-1025