

MONTEREY ON THE LAKE

WELLINGTON - P. U. D.

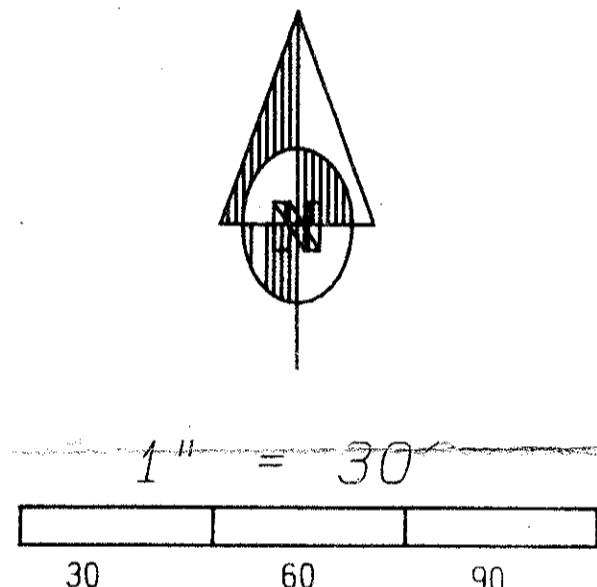
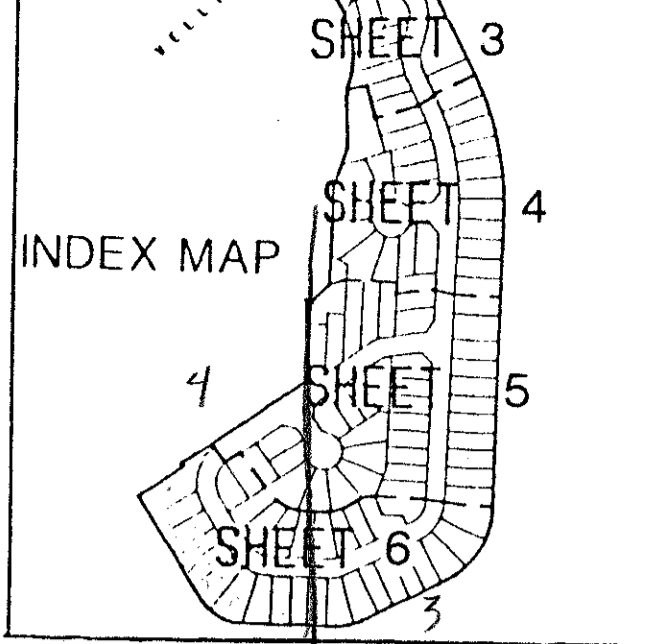
SHEET 4 OF 6 SHEETS

BEING A REPLAT OF LAKE WELLINGTON ESTATES, P. U. D.; WELLINGTON - P. U. D. AS RECORDED IN PLAT BOOK 63, PAGES 18 AND 19, OF THE PUBLIC RECORDS OF PALM BEACH COUNTY, FLORIDA.

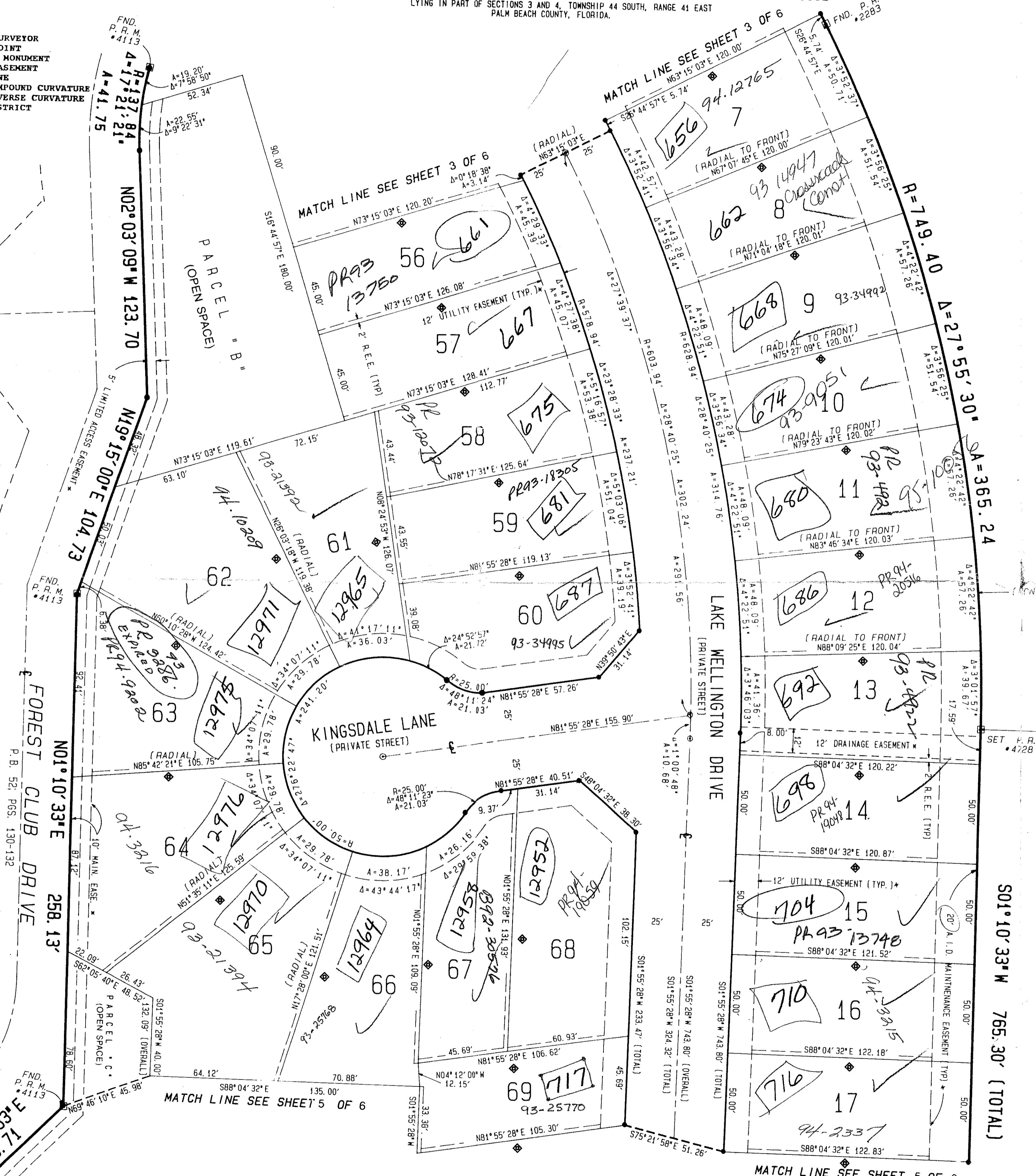
AUGUST 1992

LYING IN PART OF SECTIONS 3 AND 4, TOWNSHIP 44 SOUTH, RANGE 41 EAST PALM BEACH COUNTY, FLORIDA.

- LEGEND**
- O. R. B. = OFFICIAL RECORD BOOK
 - R/M = RIGHT-OF-WAY
 - P.B. = PLAT BOOK
 - PGS. = PAGES
 - MAINT. EASE. = MAINTENANCE EASEMENT
 - P.U.D. = PLANNED UNIT DEVELOPMENT
 - L.A.E. = LIMITED ACCESS EASEMENT
 - A = ARC LENGTH
 - R = RADIUS
 - C = CENTERLINE
 - D.U. = DWELLING UNIT
 - P.L.S. = PROFESSIONAL LAND SURVEYOR
 - P.C.P. = PERMANENT CONTROL POINT
 - P.R.M. = PERMANENT REFERENCE MONUMENT
 - R.E.E. = ROOF ENCROACHMENT EASEMENT
 - ⊙ = DENOTES ZERO LOT LINE
 - ⊙ = DENOTES POINT OF COMPOUND CURVATURE
 - ⊙ = DENOTES POINT OF REVERSE CURVATURE
 - P.C.C. = PLANNED COMMUNITY CENTER
 - P.R.C. = PLANNED RECREATION CENTER
 - A.I.D. = ACME IMPROVEMENT DISTRICT



PARCEL "A"; TRACT 38
FOREST CLUB OF
WELLINGTON - PUD
(P.B. 52; PGS. 130-132)



TAZ = 727

SUBDIVISION Monterey on the Lake
BOOK 70
PAGE 17
FLOOD ZONE FLOOD MAP #1000B
ZONING AR
QUAD #6277
SE
PUD NAME Wellington, PUD.

PET. 86-32H
COLLECT

0332-101

MONTEREY ON THE LAKE 7/17

Bailey-Fotony, inc.
land surveyors, planners, engineers
5050 10th Avenue North, Suite A - Lake Worth, Florida 33463 2602
Phone 407/965-8787