

PLAT OF
THE GARDENS MALL
BEING IN SECTION 6, TOWNSHIP 42 SOUTH, RANGE 43 EAST
CITY OF PALM BEACH GARDENS
PALM BEACH COUNTY, FLORIDA

SHEET 3 OF 3 SHEETS
AUGUST 1992

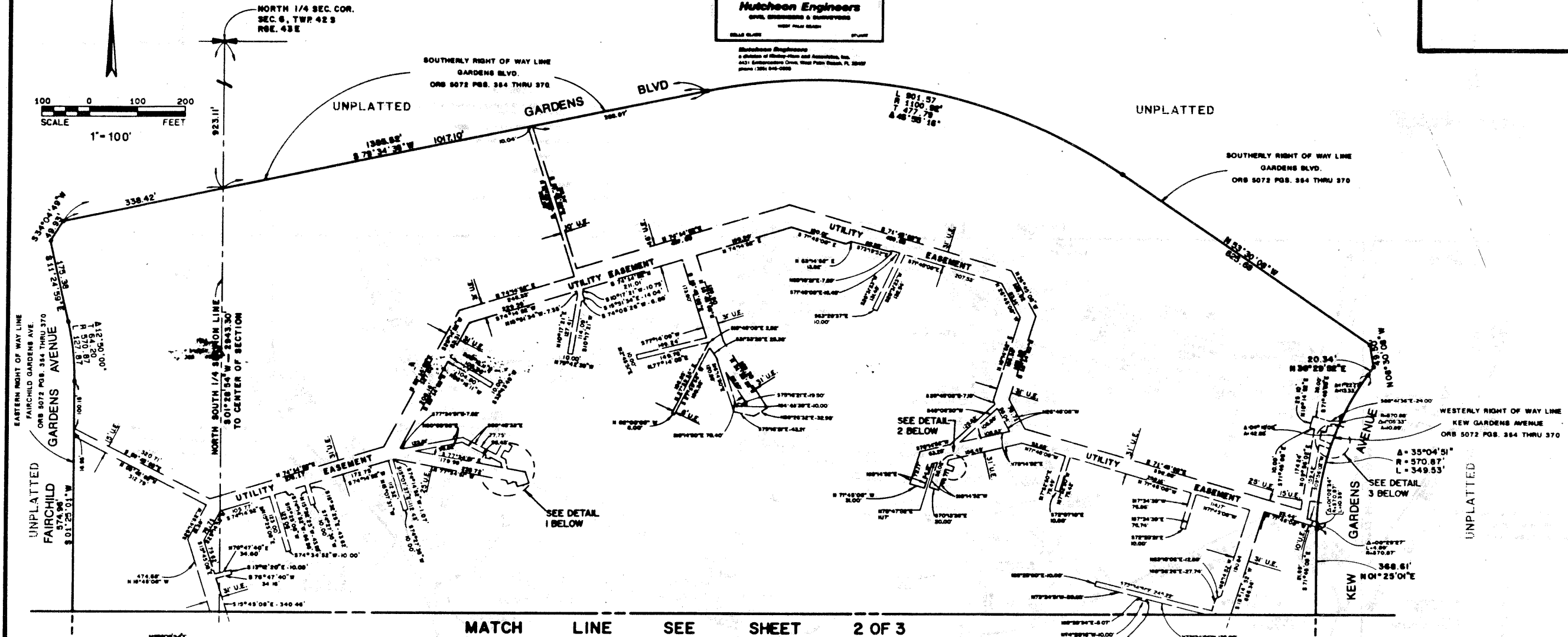
Hutcheon Engineers
CIVIL ENGINEERS & SURVEYORS
1301 S. PALM BLVD.
PALM BEACH, FLORIDA 33480
PHONE (561) 845-0200

Hutcheon Engineers
A Division of Hutcheon and Associates, Inc.
4431 Embury Drive, West Palm Beach, FL 33409
Phone (561) 845-0200

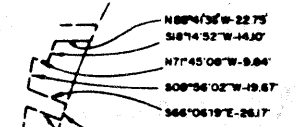
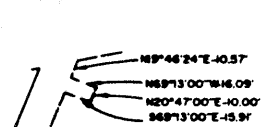
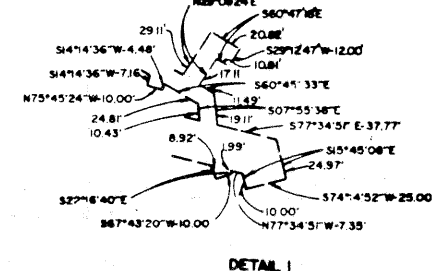
70 22



SCALE
1" = 100'
0 100 200
FEET



MATCH LINE SEE SHEET 2 OF 3



- LEGEND**
- INDICATES PERMANENT REFERENCE MONUMENT FROM SET "BLS 419"
 - U.E. - INDICATES UTILITY EASEMENT
 - ORB - OFFICIAL RECORD BOOK
 - SEC - SECTION
 - TWP - TOWNSHIP
 - RGE - RANGE
 - FP&L - FLORIDA POWER & LIGHT

NOTE Bearings shown herein are based on the South line of the Northeast 1/4 of Section 6, Township 42 South, Range 43 East, or South 80°45'00\"/>