

# REPLAT OF THE PLAT OF COSTA DEL SOL, A P.U.D.

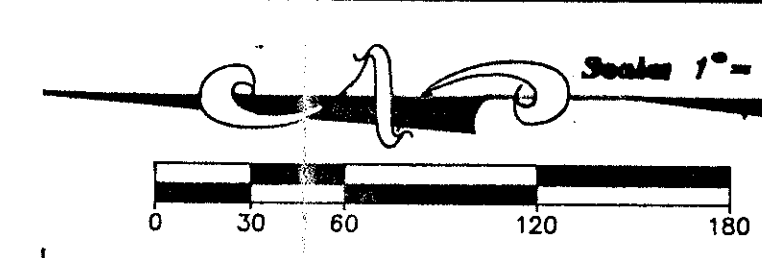
AS RECORDED IN PLAT BOOK 50, PAGES 136 AND 137

LYING IN SECTION 34, TOWNSHIP 47 SOUTH, RANGE 42 EAST

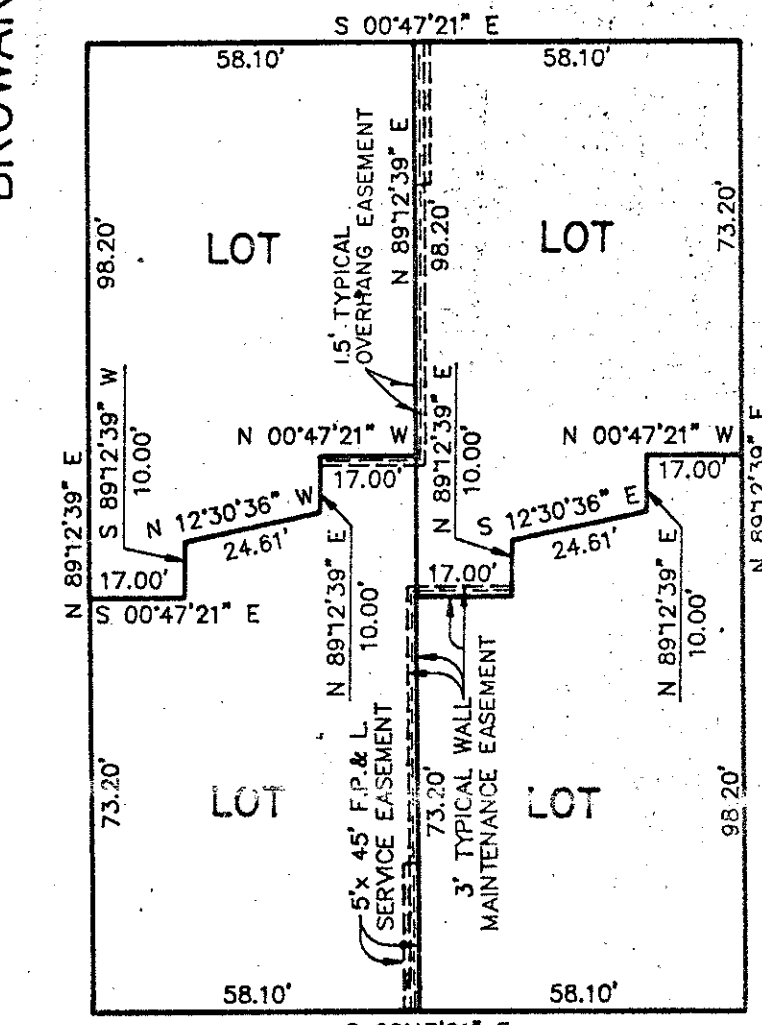
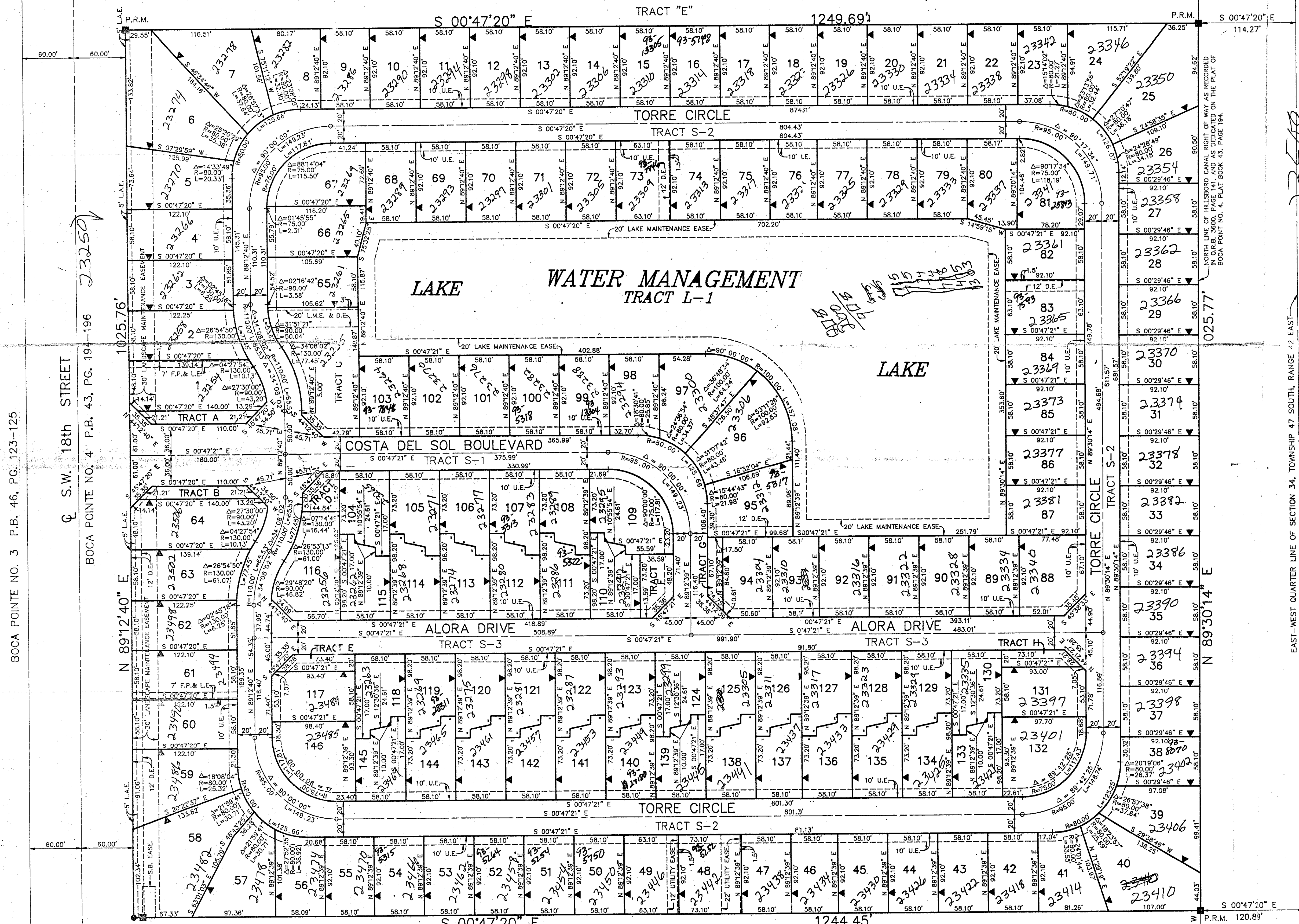
PALM BEACH COUNTY, STATE OF FLORIDA

BOCA POINTE NO. 4 P.B. 43, PG. 194-196

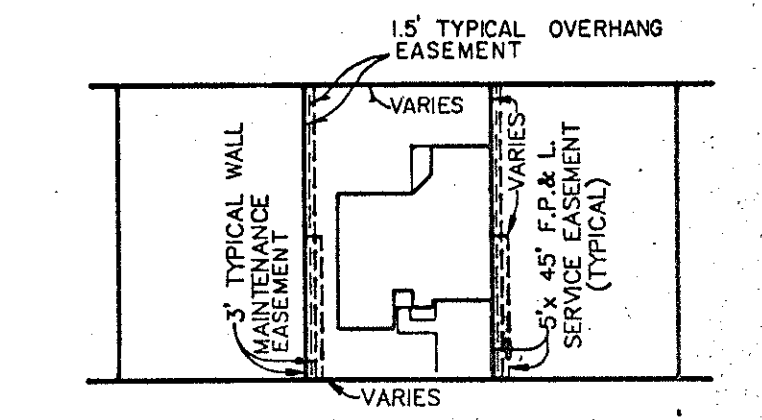
FOR ADDRESSES ONLY  
BERNARD MADE THIS COPY



P.B.  
70  
27-28



DETAIL "A"  
N.T.S.  
TYPICAL SURVEY GEOMETRY OF "Z"  
("0") LOT LINES, LOTS 104-146 INCLUSIVE  
THE SURVEY GEOMETRY (DISTANCE AND BEARINGS) AS SHOWN ALONG THE "Z", ZERO ("0") LOT LINES CORRESPOND TO THOSE LOTS IN WHICH SAID SURVEY GEOMETRY DOES NOT APPEAR ON THE FACE OF THIS PLAT. THIS DETAIL SHOWS TYPICAL EASEMENT LOCATIONS.



DETAIL "B"  
N.T.S.  
TYPICAL EASEMENTS WITHIN LOTS  
(FROM LOT 1 TO LOT 103 INCLUSIVE)  
NOTE: THE 5'x 45' F.P. & L. SERVICE EASEMENT LINE WILL VARY IN LENGTH ON LOTS 1-8, LOTS 23-26, LOTS 38-40, 56-64, AND 97-95.

- LEGEND:
- U.E. = UTILITY EASEMENT
  - S.B. = SOUTHERN BELL
  - D.E. = DRAINAGE EASEMENT
  - L.A.E. = LIMITED ACCESS EASEMENT
  - EASE. = EASEMENT
  - L.M.E. = LAKE MAINTENANCE EASEMENT
  - F.P. & L.E. = FLORIDA POWER & LIGHT EASEMENT
  - = P.R.M. (PERMANENT REFERENCE MONUMENTS)
  - ▲ = ZERO SETBACK SIDE

BOCA POINTE NO. 3 P.B. 46, PG. 123-125

BOCA POINTE NO. 4 P.B. 43, PG. 194-196

EAST-WEST QUARTER LINE OF SECTION 34, TOWNSHIP 47 SOUTH, RANGE 42 EAST

PALM BEACH COUNTY  
BROWARD COUNTY

F.R.S. & ASSOCIATES  
LAND SURVEYORS AND LAND PLANNERS  
901 NORTHPOINT PARKWAY, SUITE 301  
WEST PALM BEACH, FLORIDA 33407 (407) 478-7178