

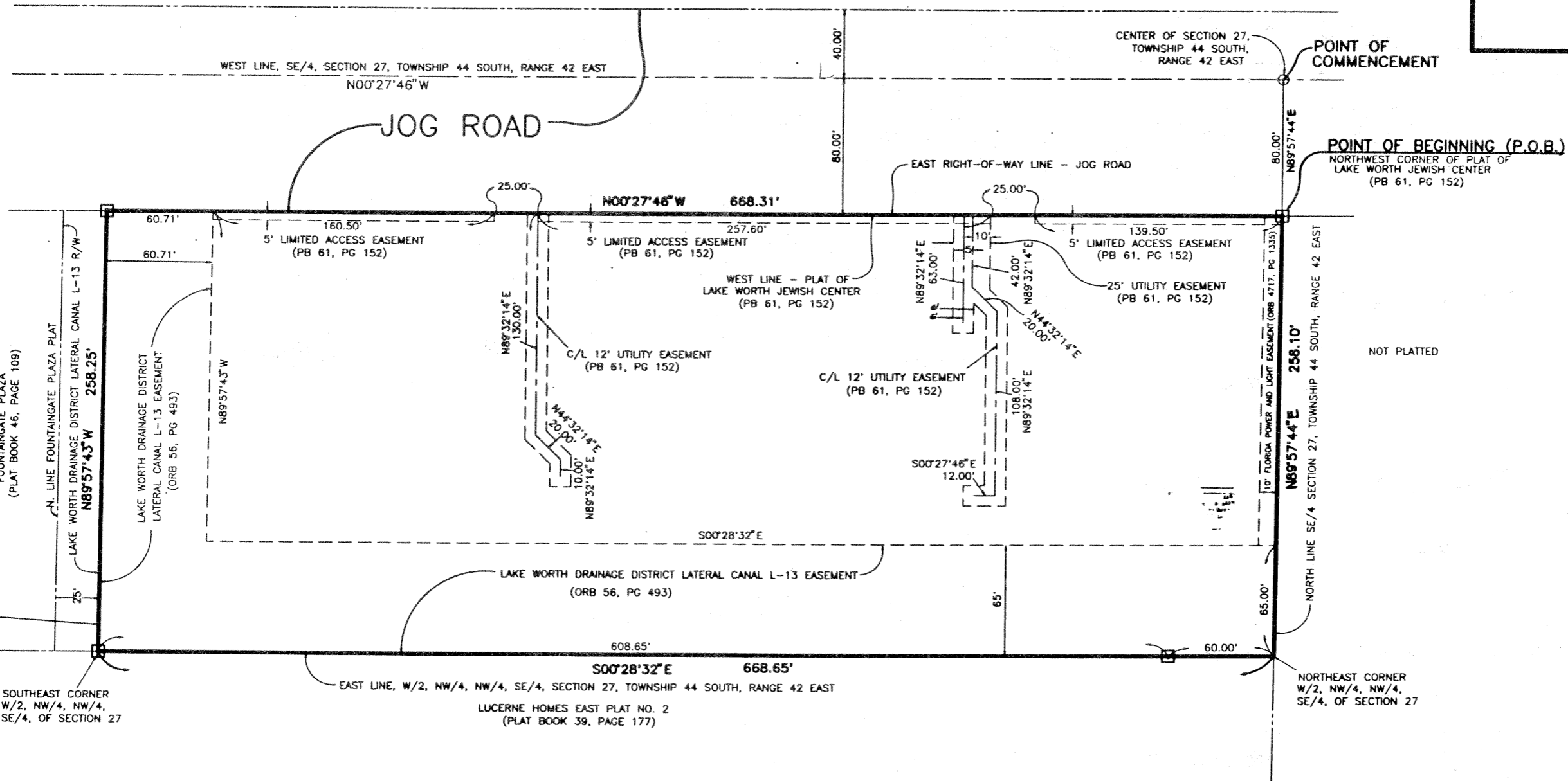


70 46

TEMPLE BETH TIKVAH

46

BEING A REPLAT OF LAKE WORTH JEWISH CENTER, AS RECORDED IN PLAT BOOK 61, PAGE 152, PUBLIC RECORDS, PALM BEACH COUNTY, FLORIDA.
LYING IN SECTION 27, TOWNSHIP 44 SOUTH, RANGE 42 EAST, CITY OF GREENACRES, PALM BEACH COUNTY, FLORIDA
FEBRUARY 1993 SHEET 1 OF 2



SOUTH LINE, W/2, NW/4, NW/4, SE/4, OF SECTION 27, TOWNSHIP 44 SOUTH, RANGE 42 EAST

FOUNTAINGATE PLAZA (PLAT BOOK 46, PAGE 109)

N. LINE FOUNTAINGATE PLAZA PLAT

LAKE WORTH DRAINAGE DISTRICT LATERAL CANAL L-13 R/W

N89°57'43\"W 258.25'

LAKE WORTH DRAINAGE DISTRICT LATERAL CANAL L-13 EASEMENT (ORB 56, PG 493)

N89°57'43\"W

60.71'

60.71'

160.50'

5' LIMITED ACCESS EASEMENT (PB 61, PG 152)

N00°27'46\"W 668.31'

257.60'

5' LIMITED ACCESS EASEMENT (PB 61, PG 152)

WEST LINE - PLAT OF LAKE WORTH JEWISH CENTER (PB 61, PG 152)

25.00'

N00°27'46\"W

25.00'

EAST RIGHT-OF-WAY LINE - JOG ROAD

10'

N89°32'14\"E

63.00'

42.00'

5' LIMITED ACCESS EASEMENT (PB 61, PG 152)

139.50'

25' UTILITY EASEMENT (PB 61, PG 152)

N89°57'44\"E

80.00'

POINT OF COMMENCEMENT

POINT OF BEGINNING (P.O.B.)

NORTHWEST CORNER OF PLAT OF LAKE WORTH JEWISH CENTER (PB 61, PG 152)

80.00'

N89°57'44\"E

258.10'

NORTH LINE SE/4 SECTION 27, TOWNSHIP 44 SOUTH, RANGE 42 EAST

NOT PLATTED

10' FLORIDA POWER AND LIGHT EASEMENT (ORB 4717, PG 1333)

65.00'

N89°57'44\"E

60.00'

NORTH EAST CORNER W/2, NW/4, NW/4, SE/4, OF SECTION 27

65.00'

S00°28'32\"E

608.65'

S00°28'32\"E 668.65'

EAST LINE, W/2, NW/4, NW/4, SE/4, SECTION 27, TOWNSHIP 44 SOUTH, RANGE 42 EAST

LUCERNE HOMES EAST PLAT NO. 2 (PLAT BOOK 39, PAGE 177)

65.00'

S00°28'32\"E

608.65'

SOUTHEAST CORNER W/2, NW/4, NW/4, SE/4, OF SECTION 27

ABBREVIATIONS:
 ORB = OFFICIAL RECORDS BOOK
 PB = PLAT BOOK
 PG = PAGE
 R/W = RIGHT-OF-WAY
 W/2 = WEST ONE-HALF
 NW/4 = NORTHWEST ONE-QUARTER
 NE/4 = NORTHEAST ONE-QUARTER
 SE/4 = SOUTHEAST ONE-QUARTER

LEGEND:
 [Symbol] = SET PERMANENT REFERENCE MONUMENT NUMBER 2424

THIS INSTRUMENT WAS PREPARED BY BENCH MARK LAND SURVEYING & MAPPING, INC. FOR THE OFFICES OF BENCH MARK LAND SURVEYING & MAPPING, INC., 4152 WEST BLUE HERON BOULEVARD, SUITE 121, MIAMI BEACH, FL.

BENCH MARK
 Land Surveying and Mapping, Inc.
 4152 West Blue Heron Blvd., Suite 121, Miami Beach, FL 33404
 Tel: (305) 864-8888 Fax: (305) 864-7100

RECORD PLAT		TEMPLE BETH TIKVAH	
DATE	2-16-93	WO #	882-218
SCALE	1" = 30'	SHEET	1 OF 2

11793