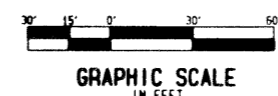
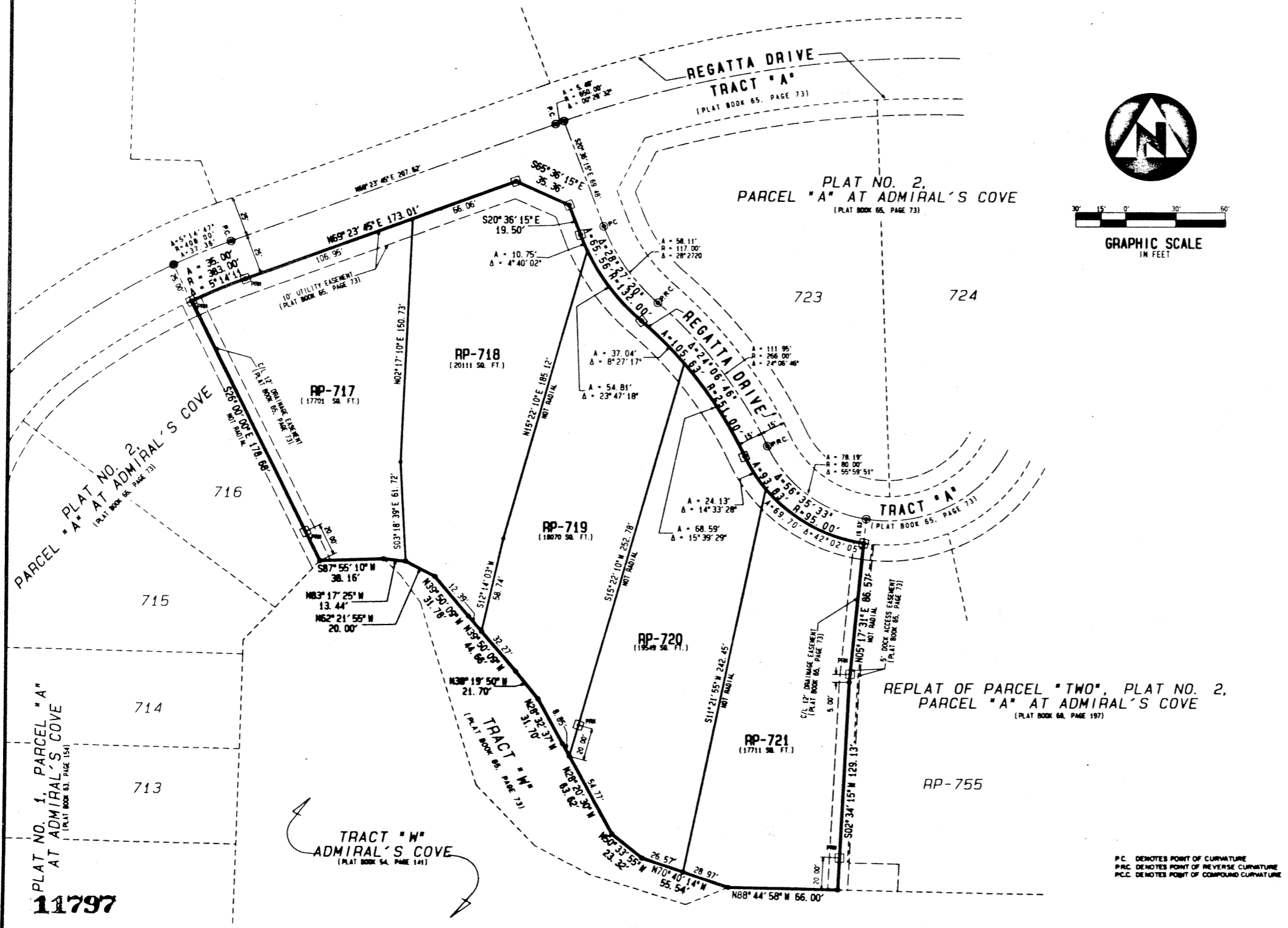


REPLAT OF LOTS 717, 718, 719, 720, 721, AND 722, PARCEL "A" AT ADMIRAL'S COVE

BEING A REPLAT OF LOTS 717 THROUGH 722, INCLUSIVE, PLAT NO. 2, PARCEL "A" AT ADMIRAL'S COVE, PLAT BOOK 65, PAGE 73, AND LYING IN SECTION 7, TOWNSHIP 41 SOUTH, RANGE 43 EAST, TOWN OF JUPITER, PALM BEACH COUNTY, FLORIDA

70 50



- SURVEYOR'S NOTES AND LEGEND**
1. BEARINGS SHOWN OR STATED HEREON ARE BASED ON, OR ARE RELATIVE TO THE BEARING OF SOUTH 26°00'00" EAST ALONG THE WEST LINE OF LOT 717, PLAT NO. 2, PARCEL "A" AT ADMIRAL'S COVE, AS RECORDED IN PLAT BOOK 65, PAGE 73, PUBLIC RECORDS, PALM BEACH COUNTY, FLORIDA.
 2. IN THOSE INSTANCES WHERE UTILITY/DRAINAGE STRUCTURES ARE CONSTRUCTED IN CONFLICT WITH THE PLATTED PERMANENT CONTROL POINTS (P.C.P.) POSITION, STRADDLERS MONUMENTED AS PERMANENT CONTROL POINTS WILL BE SET TO REFERENCE THE PLATTED P.C.P. POSITION.
 3. LINES WHICH INTERSECT CURVES ARE NOT RADIAL, UNLESS OTHERWISE NOTED.
 4. C/L DENOTES A CENTERLINE.
 5. SQ. FT. DENOTES SQUARE FEET.
 6. [Symbol] DENOTES A SET #2424 PERMANENT REFERENCE MONUMENT (P.R.M.).
 7. [Symbol] DENOTES A SET #2424 PERMANENT CONTROL POINT (P.C.P.).
 8. [Symbol] DENOTES A FOUND #2424 PERMANENT CONTROL POINT (P.C.P.).
 9. ALL DIMENSIONS SHOWN HEREON ARE AS PREVIOUSLY PLATTED AND DEDICATED IN PLAT NO. 2, PARCEL "A" AT ADMIRAL'S COVE.

THIS INSTRUMENT WAS PREPARED BY WILLIAM R. VAN CAMPEN, R.L.S., IN AND FOR THE OFFICES OF BENCH MARK LAND SURVEYING & MAPPING, INC., 4152 WEST BLUE HERON BOULEVARD, SUITE 121, RIVIERA BEACH, FLORIDA.

BENCH MARK LAND SURVEYING & MAPPING, INC.
4152 WEST BLUE HERON BOULEVARD, SUITE 121, RIVIERA BEACH, FLORIDA 33404
PHONE: (407) 848-0222 FAX: (407) 848-0808

RECORD PLAT
REPLAT OF LOTS 717, 718, 719, 720, 721, AND 722, PARCEL "A" AT ADMIRAL'S COVE

DATE	12-21-92	SHEET	2 OF 2
SCALE	AS SHOWN		

P.C. DENOTES POINT OF CURVATURE
P.R.C. DENOTES POINT OF REVERSE CURVATURE
P.C.C. DENOTES POINT OF COMPOUND CURVATURE

11797