



54 THE GOLF VILLAGE AT ADMIRAL'S COVE

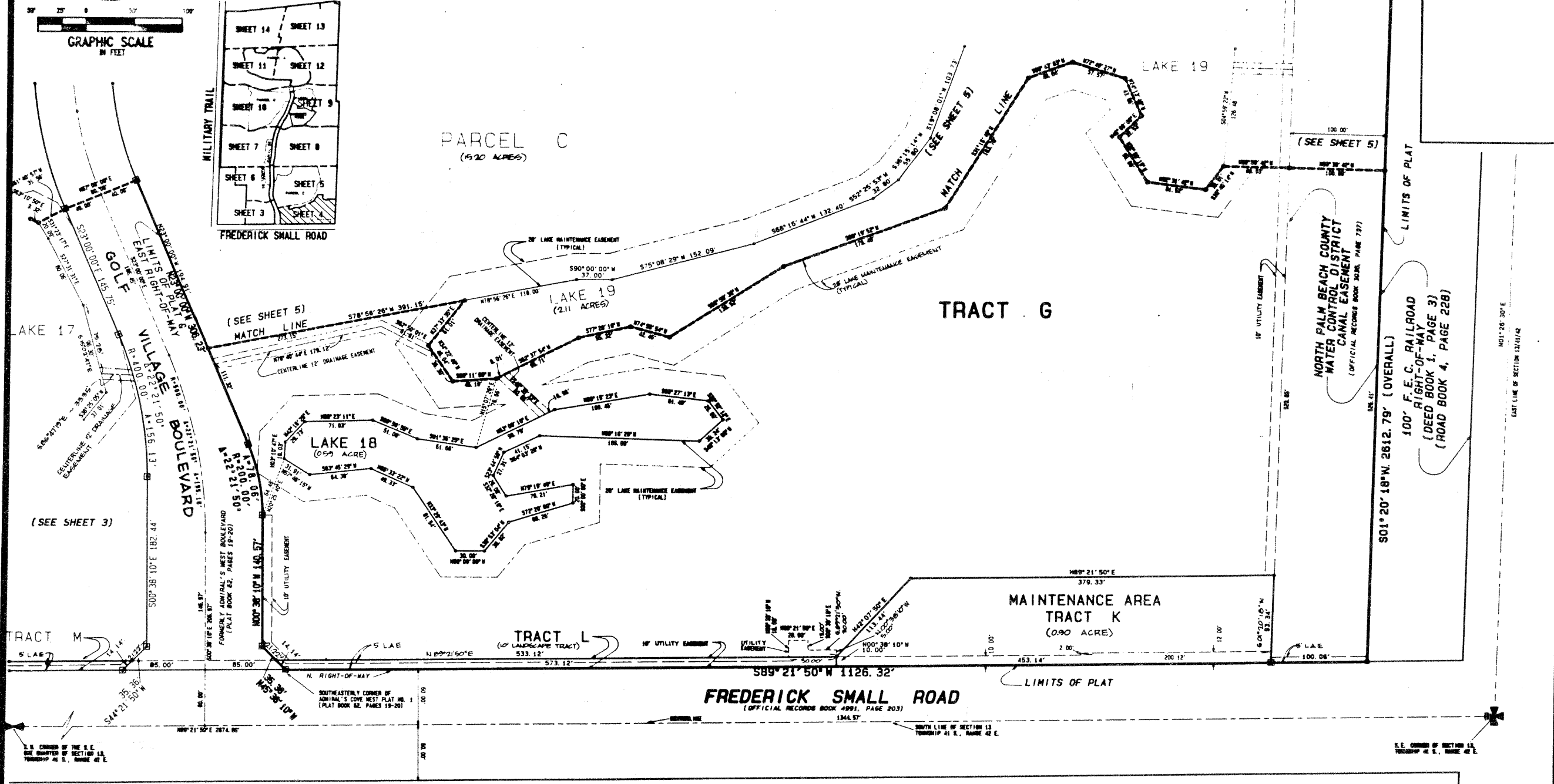
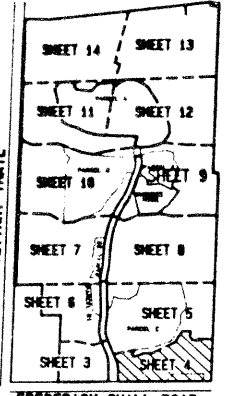
BEING A REPLAT OF A PORTION OF ADMIRAL'S COVE WEST PLAT NO. 1, AS RECORDED IN PLAT BOOK 62, PAGE 19, PUBLIC RECORDS, PALM BEACH COUNTY, FLORIDA, AND LYING IN SECTION 13, TOWNSHIP 41 SOUTH, RANGE 42 EAST, TOWN OF JUPITER, PALM BEACH COUNTY, FLORIDA

KEY MAP

FEBRUARY, 1993

SHEET 4 OF 14

54



(SEE SHEET 3)

(SEE SHEET 5)

(SEE SHEET 5)

NORTH PALM BEACH COUNTY WATER CONTROL DISTRICT CANAL EASEMENT (OFFICIAL RECORDS BOOK 3038, PAGE 2377)

100' F.E.C. RAILROAD RIGHT-OF-WAY (DEED BOOK 1, PAGE 3) (ROAD BOOK 4, PAGE 228)

S.E. CORNER OF THE S.E. 1/4 OF SECTION 13, TOWNSHIP 41 S., RANGE 42 E.

S.E. CORNER OF SECTION 13, TOWNSHIP 41 S., RANGE 42 E.

11801

- PERM. DENOTES PERMANENT REFERENCE MEASUREMENT
- L.A.E. DENOTES LIMITED ACCESS EASEMENT
- O.A.B. DENOTES OFFICIAL RECORD BOOK
- P. DENOTES PAGE
- P.C.P. DENOTES PERMANENT CONTROL POINT

THIS INSTRUMENT WAS PREPARED BY WILLIAM R. VAN CAMP, P.L.L.C., IN AND FOR THE OFFICES OF BENCH MARK LAND SURVEYING & MAPPING, INC., 4152 WEST BLUE HERON BOULEVARD, SUITE 121, RIVIERA BEACH, FLORIDA

BENCH MARK
LAND SURVEYING & MAPPING, INC.
4152 WEST BLUE HERON BOULEVARD, SUITE 121
RIVIERA BEACH, FLORIDA 33406
PHONE: (407) 241-1100 FAX: (407) 241-1101

RECORD PLAT

THE GOLF VILLAGE AT ADMIRAL'S COVE