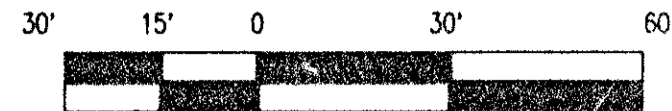
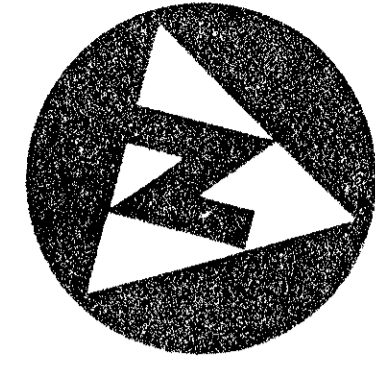


# THE LEXINGTON CLUB PLAT NO. 4

A PART OF HAMILTON PLACE, A PLANNED UNIT DEVELOPMENT, LYING IN SECTION 21, TOWNSHIP 46 SOUTH, RANGE 42 EAST, PALM BEACH COUNTY, FLORIDA  
BEING A REPLAT OF A PORTION OF THE LEXINGTON CLUB PLAT NO. 2, ACCORDING TO THE PLAT THEREOF AS RECORDED IN  
PLAT BOOK 59, PAGE 18, PUBLIC RECORDS, PALM BEACH COUNTY, FLORIDA

JANUARY 1993

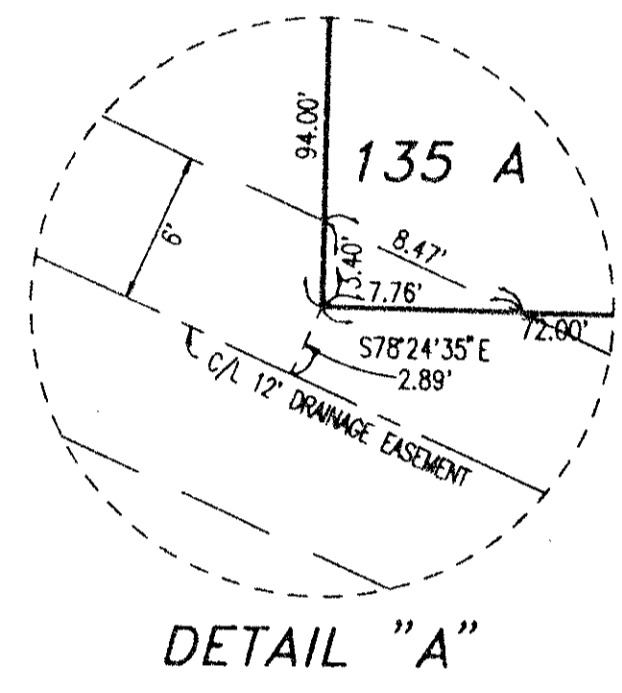
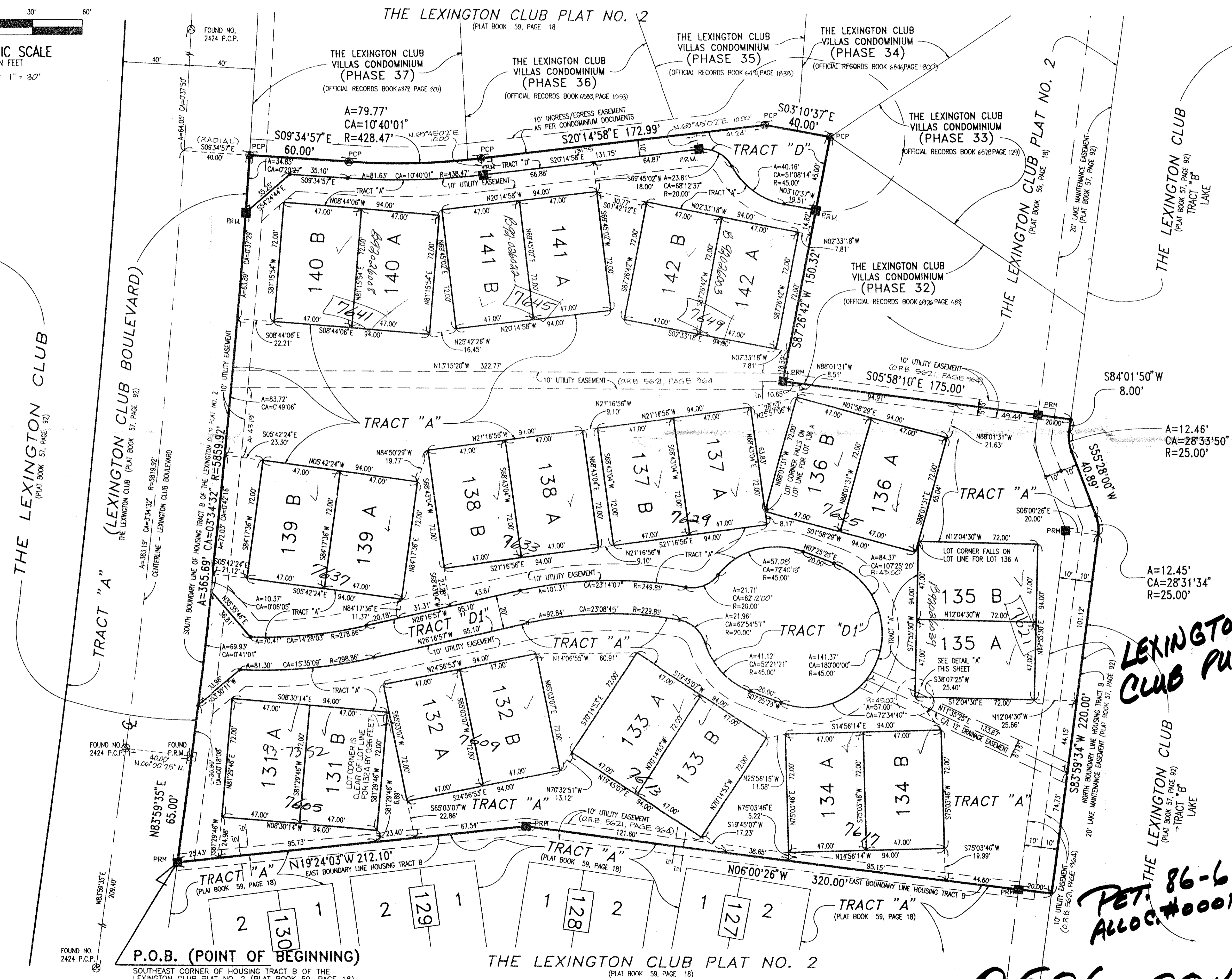
SHEET 2 OF 2



GRAPHIC SCALE  
IN FEET  
SCALE: 1" = 30'

68

STATE OF FLORIDA )  
COUNTY OF PALM BEACH ) SS  
THIS PLAT WAS FILED FOR RECORD AT  
THIS DAY OF  
A.D., 1993, AND DULY RECORDED  
IN PLAT BOOK \_\_\_\_\_ THROUGH \_\_\_\_\_  
ON PAGES \_\_\_\_\_ THROUGH \_\_\_\_\_  
Dorothy H. Wilken  
Clerk Of The Circuit Court  
By: \_\_\_\_\_  
Deputy Clerk



GENERAL EASEMENT NOTES & RESTRICTIVE COVENANTS:  
1. BUILDING SETBACK LINES SHALL BE AS REQUIRED BY CURRENT PALM BEACH COUNTY ZONING REGULATIONS.  
2. THERE SHALL BE NO BUILDINGS OR ANY KIND OF CONSTRUCTION OR LANDSCAPING PLACED ON UTILITY OR DRAINAGE EASEMENTS. CONSTRUCTION OR LANDSCAPING UPON MAINTENANCE OR UTILITY ACCESS EASEMENTS, MUST BE IN CONFORMANCE WITH ORDINANCE 86-10 AND ALL OTHER BUILDING AND ZONING CODES AND/OR ORDINANCES OF PALM BEACH COUNTY, FLORIDA.  
3. THERE SHALL BE NO TREES OR SHRUBS PLACED UPON UTILITY EASEMENTS WHICH ARE PROVIDED FOR WATER OR SEWER USE, OR UPON DRAINAGE, LAKE MAINTENANCE OR LAKE MAINTENANCE ACCESS EASEMENTS.  
4. LANDSCAPING ON OTHER UTILITY EASEMENTS SHALL BE ALLOWED ONLY AFTER THE CONSENT OF ALL UTILITY COMPANIES OCCUPYING SAME.  
5. WHERE DRAINAGE AND UTILITY EASEMENTS INTERSECT, THE AREAS WITHIN THE INTERSECTION ARE UTILITY AND DRAINAGE EASEMENTS. CONSTRUCTION AND MAINTENANCE OF UTILITY FACILITIES SHALL NOT INTERFERE WITH THE DRAINAGE FACILITIES WITHIN THESE AREAS OF INTERSECTION.  
6. NOTICE: THERE MAY BE ADDITIONAL RESTRICTIONS, NOT SHOWN ON THIS PLAT, THAT MAY BE FOUND IN THE PUBLIC RECORDS OF PALM BEACH COUNTY, FLORIDA.

SURVEYOR'S NOTES AND LEGEND:  
1. BEARINGS SHOWN OR STATED HEREON, ARE BASED ON, OR ARE RELATIVE TO THE BEARING OF NORTH 19°24'03" WEST, AG SHOWN, ON THE EAST LINE OF HOUSING TRACT B, THE LEXINGTON CLUB PLAT NO. 2, AS RECORDED IN PLAT BOOK 59, PAGE 18.  
2. IN THOSE INSTANCES WHERE UTILITY/DRAINAGE STRUCTURES ARE CONSTRUCTED IN CONFLICT WITH THE PLATTED PERMANENT CONTROL POINTS (P.C.P.) POSITION, STRADDLERS MONUMENTED AS PERMANENT CONTROL POINTS WILL BE SET TO REFERENCE THE PLATTED P.C.P. POSITION.  
3. LINES WHICH INTERSECT CURVES ARE NOT RADIAL, UNLESS OTHERWISE NOTED.  
4. C/L DENOTES A CENTERLINE.  
5. PRM INDICATES PERMANENT REFERENCE MONUMENT 4" x 4" x 24" CONCRETE MONUMENT NO. 2424.  
6. PCP INDICATES PERMANENT CONTROL POINT CARRIAGE BOLT AND WASHER NO. 2424.  
7. F INDICATES FOUND PERMANENT REFERENCE MONUMENT 4" x 4" x 24" CONCRETE MONUMENT NO. 2424.  
8. B INDICATES FOUND PERMANENT CONTROL POINT CARRIAGE BOLT AND WASHER NO. 2424.  
9. O.R.B. DENOTES OFFICIAL RECORD BOOK

THIS INSTRUMENT WAS PREPARED BY WILLIAM R. VAN CAMPEN, R.L.S., IN AND FOR THE OFFICES OF BENCH MARK LAND SURVEYING & MAPPING, INC., 4152 WEST BLUE HERON BOULEVARD, SUITE 121, RIVIERA BEACH, FLORIDA 33404. PHONE (407) 848-2102 FAX (407) 848-9859

BENCH MARK  
LAND SURVEYING & MAPPING, INC.  
4152 WEST BLUE HERON BOULEVARD, SUITE 121  
RIVIERA BEACH, FLORIDA 33404  
PHONE (407) 848-2102 FAX (407) 848-9859

SUBDIVISION - LEXINGTON CLUB PLAT 4  
BOOK TO PAGE 68  
FLOOD ZONE B  
QUAD # 52  
SE 80-6  
ZIP CODE 33446  
PUD NAME HAMILTON PLACE  
21/4/93

TAZ = 468

LEXINGTON CLUB PUD  
PET. 86-6  
ALLOT. #0001

0506-004

RECORD PLAT  
THE LEXINGTON CLUB PLAT NO. 4  
DRAWN: DJM/CDD CHECKED: DATE: 10/01/92 SHEET  
SCALE: GRAPHIC TITLE: LEXINGTON CLUB PLAT NO. 4